

Index No. 3923080

CERTIFICATE OF LOCATION OF GOVERNMENT CORNER

WEST QUARTER Corner of Section 2, Township 39, Range 23, 4TH P.M.

STATE OF MINNESOTA, County of KANABEC

At the corner location shown on the sketch:
On 10/ /2003 Found a Kanabec County Monument.

Kanabec County U.S. Survey Feet Coordinates
NAD 1983, HARN 1996 Adjustment
Obtained by RTK GPS Observation

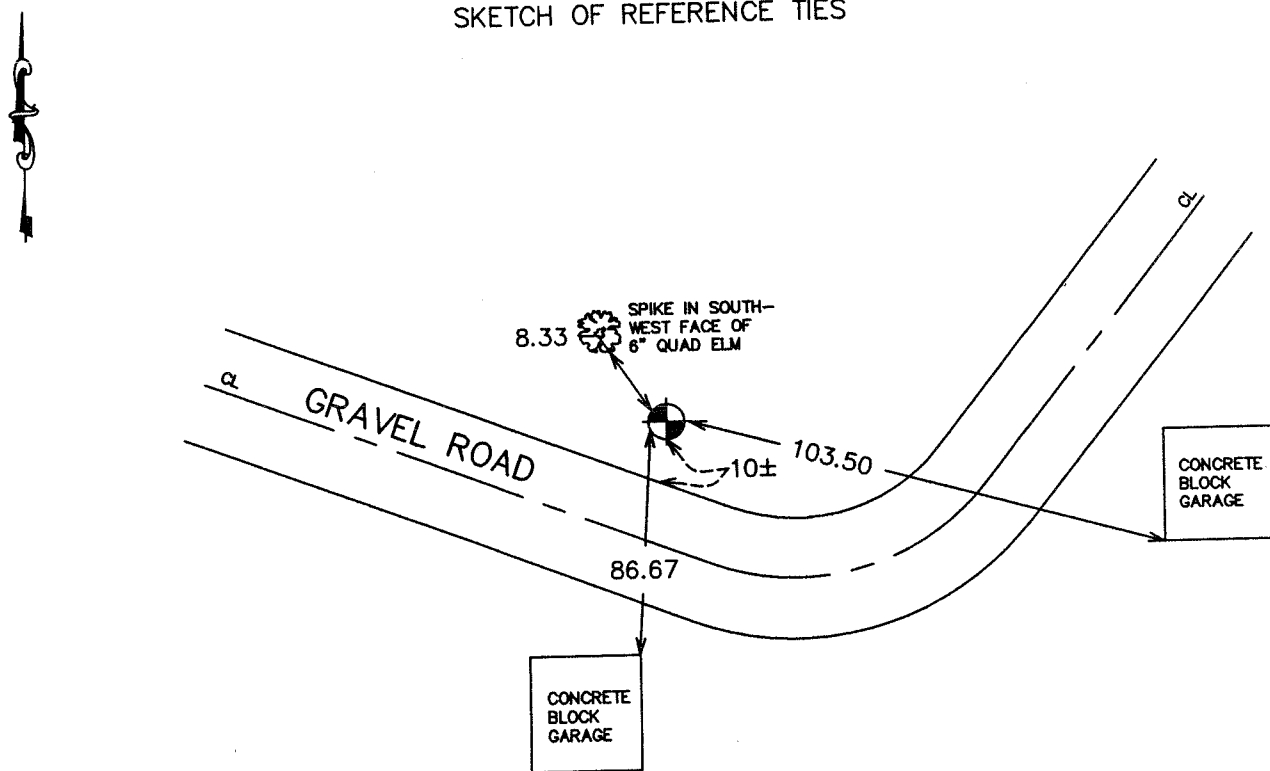
Northing= 161085.029

Easting= 427761.883

Note: NAD 1983, HARN 1996 Adjustment
coordinates are NOT compatible with
NAD 1983 coordinates

Note: 1 Meter=3937/1200 U.S. Survey Feet

SKETCH OF REFERENCE TIES



Statement of evidence relative to this corner location is on back of page.

I hereby certify that this document and the data contained herein was prepared by me or under my direct supervision.

Ernest Rud 5-19-2004
Signature Date

Registration No. 9808

Land Surveyor, [] Professional Engineer

OFFICE OF THE COUNTY RECORDER

County of _____

I hereby certify that this document was filed in the County Recorder's office at _____ M. on the _____ day of _____ A.D., 20 _____

County Recorder _____

BY _____ Deputy

DOCUMENT NO. _____

STATEMENT OF EVIDENCE
(FROM TIE SHEET 311) (1974)

Reset West Quarter corner of Section 2, Township 39, Range 23, from information of ANNE'S SUBDIVISION and JOHNSON AND BLAKE'S SOUTH LAKEVIEW ADDITION.

(2003)

In October of 2003, we did a survey around Section 2 and Section 3 and found this monument. We took new ties and established Kanabec County coordinates on the corner using G.P.S. equipment.