

Index No. 3923079

# CERTIFICATE OF LOCATION OF GOVERNMENT CORNER

SOUTH QUARTER Corner of Section 2, Township 39, Range 23, 4TH P.M.

STATE OF MINNESOTA, County of KANABEC

At the corner location shown on the sketch:  
On 10/ /2003 Found a Kanabec County Monument.

Kanabec County U.S. Survey Feet Coordinates  
NAD 1983, HARN 1996 Adjustment  
Obtained by RTK GPS Observation

Northing= 158362.62

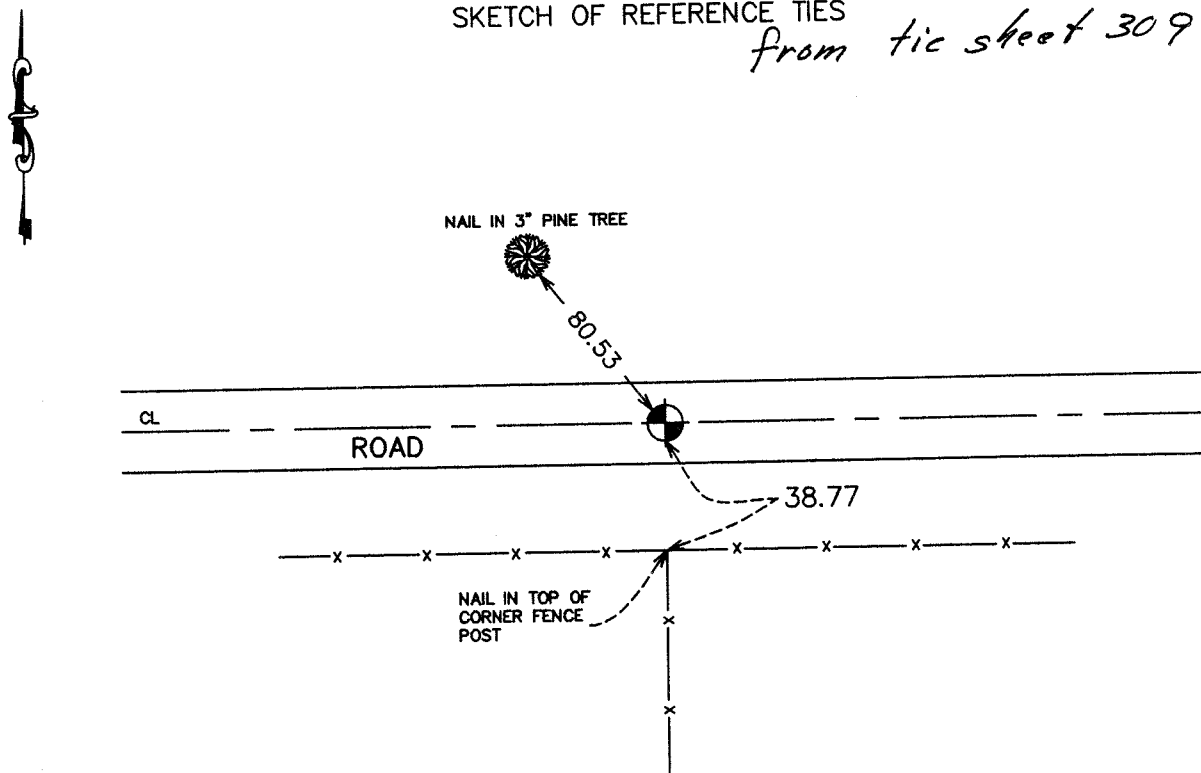
Easting= 430372.02

Note: NAD 1983, HARN 1996 Adjustment  
coordinates are NOT compatible with  
NAD 1983 coordinates

Note: 1 Meter=3937/1200 U.S. Survey Feet

## SKETCH OF REFERENCE TIES

*from tie sheet 309*



Statement of evidence relative to this corner location is on back of page.

I hereby certify that this document and the data contained herein was prepared by me or under my direct supervision.

Ernest Alud  
Signature

5-19-2004  
Date

Registration No. 9808

## OFFICE OF THE COUNTY RECORDER

County of \_\_\_\_\_

I hereby certify that this document was filed in the County Recorder's office at \_\_\_\_\_ M. on the \_\_\_\_\_ day of \_\_\_\_\_ A.D., 20\_\_\_\_

County Recorder \_\_\_\_\_

STATEMENT OF EVIDENCE  
(FROM TIE SHEET 304) (1974)

Reset South Quarter corner from plat of JOHNSON AND BLAKE'S SOUTH LAKEVIEW ADDITION.

(2003)

In October of 2003, we did a survey around Section 2 and Section 3 and found this aluminum monument down 0.6'. We established Kanabec County coordinates on this corner using G.P.S. equipment.