

# CERTIFICATE OF LOCATION OF GOVERNMENT CORNER

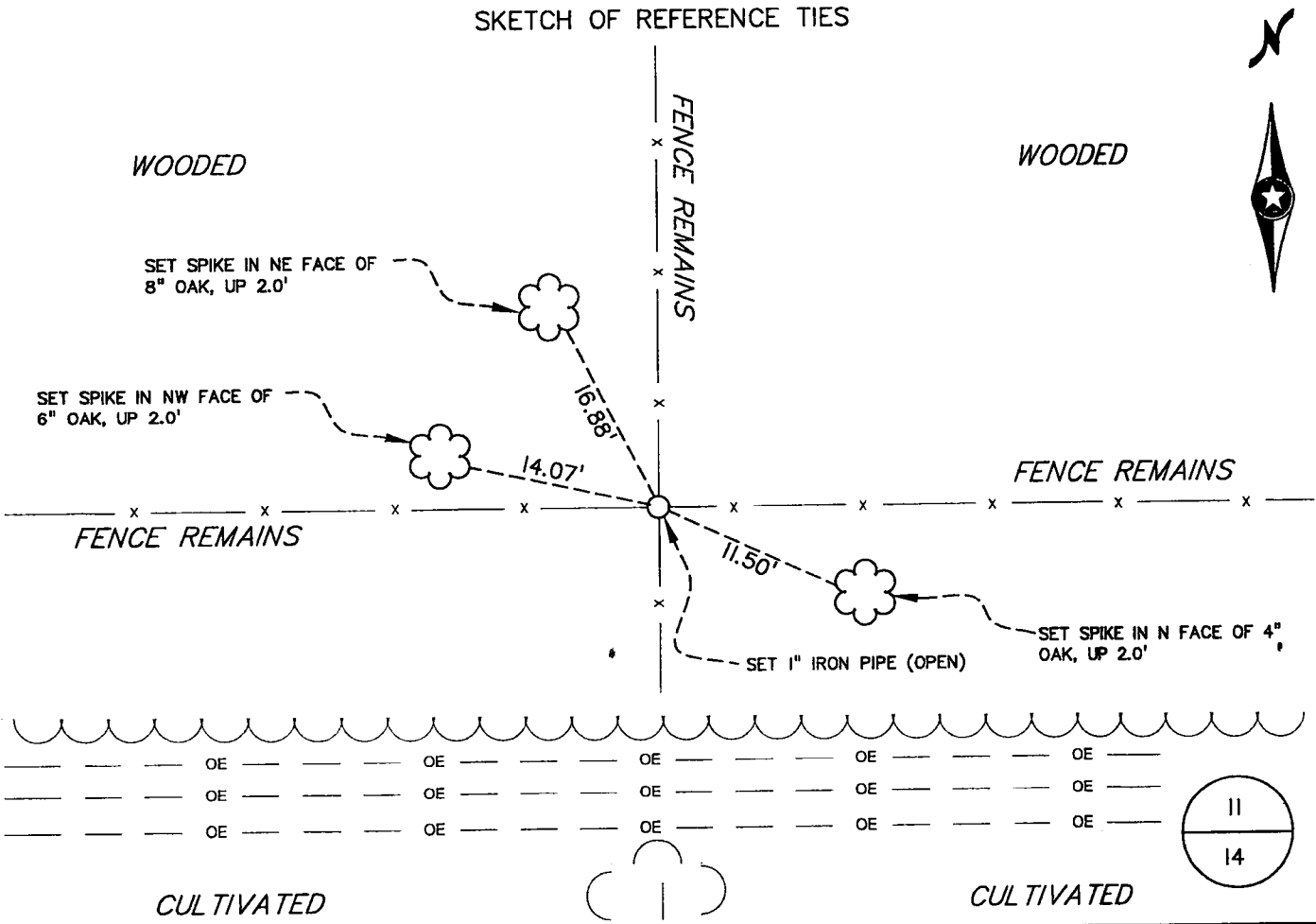
North Quarter Corner of Section 14, Township 39, Range 23, 4th P.M.

STATE OF MINNESOTA, County of KANABEC

At the corner location shown on the sketch:

- On \_\_\_\_\_ found a \_\_\_\_\_  
DATE \_\_\_\_\_
- left monument as found,     lowered monument,     removed monument (explain)
- On 8-7-06 placed a 1" IRON PIPE (OPEN)  
DATE \_\_\_\_\_

SKETCH OF REFERENCE TIES



Statement of evidence relative to this corner location is on back of this page.

I hereby certify that this document and the data contained herein was prepared by me or under my direct supervision.

David A. Regan      12/18/06  
SIGNATURE                      DATE

Registration No. R.L.S. 12236

- Land Surveyor                       Professional Engineer  
 County Surveyor                       County Engineer

OFFICE OF THE COUNTY RECORDER  
County of KANABEC

I hereby certify that this document was filed in the County Recorder's office at 8:00 A . M. on the 18 day of Jan A.D., 2007  
County Recorder Rhonda Olson

By \_\_\_\_\_, Deputy

DOCUMENT NO. \_\_\_\_\_

## *STATEMENT OF EVIDENCE*

North Quarter Corner of Section 14, Township 39 North, Range 23 West, 4th Principal Meridian, Comfort Township, Kanabec County, Minnesota

During the G.L.O. survey, a wood post was set to mark the corner and bearing trees were recorded as follows:

8" Poplar	S 4° E	20 links
12" Basswood	N 8° W	23 links

No subsequent surveys were found at the Kanabec County Offices in Mora, Minnesota.

In 2006, Bogart, Pederson, and Associates (BPA), in a private survey in Section 14, searched for the original government corner and its accessories but none were found. Fence remains were found near the position of the corner running north, south, east, and west. These fence remains were followed to a point of intersection and no monument was found. BPA accepted this position as the best evidence of the corner. Reference ties were recorded at this time.