

# CERTIFICATE OF LOCATION OF GOVERNMENT CORNER

NORTHEAST Corner of Section 15, Township 39, Range 23, 4TH P.M.

STATE OF MINNESOTA, County of KANABEC

At the corner location shown on the sketch:  
 1/2" IRON PIPE WITH CAP MARKED R.L.S. #12236  
 AT 9" BELOW GRADE.

Kanabec County U.S. Survey Feet Coordinates  
 NAD 1983, HARN 1996 Adjustment  
 Obtained by RTK GPS Observation

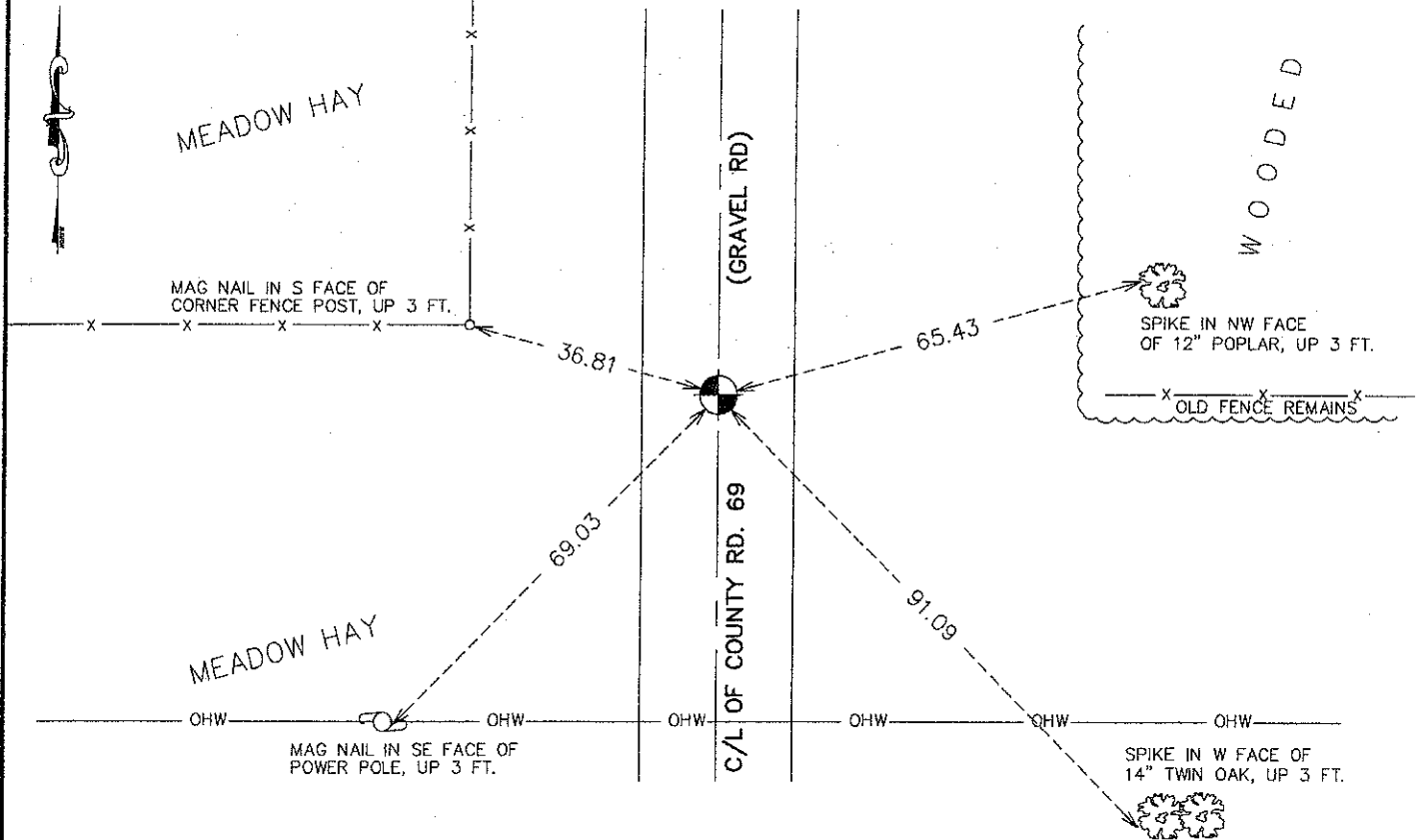
Northing= 153086.19

Easting= 427699.31

Note: NAD 1983, HARN 1996 Adjustment coordinates are NOT compatible with NAD 1983 coordinates

Note: 1 Meter=3937/1200 U.S. Survey Feet

## SKETCH OF REFERENCE TIES



Statement of evidence relative to this corner location is on back of page.

I hereby certify that this document and the data contained herein was prepared by me or under my direct supervision.

*Ernest J. Red*  
 Signature

12-21-2011  
 Date

Registration No. 9808

- Land Surveyor,     Professional Engineer
- County Surveyor,     County Engineer

### OFFICE OF THE COUNTY RECORDER

County of \_\_\_\_\_

I hereby certify that this document was filed in the County Recorder's office at \_\_\_\_\_ M. on the \_\_\_\_\_ day of \_\_\_\_\_ A.D., 20 \_\_\_\_\_

County Recorder \_\_\_\_\_  
 BY \_\_\_\_\_ Deputy

DOCUMENT NO. \_\_\_\_\_

NE CORNER, SEC. 15, T39, R23

**STATEMENT OF EVIDENCE**

**DURING THE G.L.O. SURVEY, A WOOD POST WAS SET TO MARK THIS CORNER AND BEARING TREES WERE RECORDED AS FOLLOWS:**

- 10" WHITE BIRCH @ 8 LINKS BEARING N78°E**
- 8" BLACK ASH @ 18 LINKS BEARING S75°W**
- 9" BLACK ASH @ 58 LINKS BEARING S 41°E**

**IN 2006, BOGART, PETERSON AND ASSOC. (BPA), IN A PRIVATE SURVEY IN SEC. 14, SEARCHED FOR THE ORIGINAL GOVERNMENT CORNER AND ITS ACCESSORIES BUT NONE WERE FOUND. BPA, WITH ASSISTANCE FROM CASEY GRAHAM AND A BACKHOE ON AUGUST 18, 2006, EXCAVATED AN AREA 9 FEET WIDE BY 10 FEET WIDE BY 3 FEET DEEP TO THE ORIGINAL MATERIAL BUT NO EVIDENCE OF THE CORNER WAS FOUND. FENCE REMAINS WERE FOUND NEAR THE POSITION OF THE CORNER RUNNING EAST AND WEST. A NEWER FENCE WAS CONSTRUCTED HEADING WEST FROM THE CORNER BUT FELL NORTH OF THE POSITION. THE CORNER WAS PLACED ON OLD FENCE REMAINS RUNNING EAST FROM THE CORNER AND FIT WELL WITH THE DISTANCE OF 266.08 FEET TO THE WEST 1/4 CORNER OF SEC. 14. A 1/2" IRON PIPE (R.L.S. #12236) WAS PLACED AT THIS LOCATION AND REFERENCE TIES WERE RECORDED AT THIS TIME.**

**ON NOVEMBER 14, 2011 E.G. RUD AND SONS IN DOING A SURVEY IN SEC. 16, T.39, R.23 DUG UP THIS CORNER, VERIFIED TIES AND ESTABLISHED KANABEC COUNTY COORDINATES ON THIS POSITION.**