

# CERTIFICATE OF LOCATION OF GOVERNMENT CORNER

EAST QUARTER Corner of Section 15, Township 39, Range 23, 4TH P.M.

STATE OF MINNESOTA, County of KANABEC

At the corner location shown on the sketch:

7/8" BY 24" REBAR WITH CAP

Kanabec County U.S. Survey Feet Coordinates  
NAD 1983, HARN 1996 Adjustment  
Obtained by RTK GPS Observation

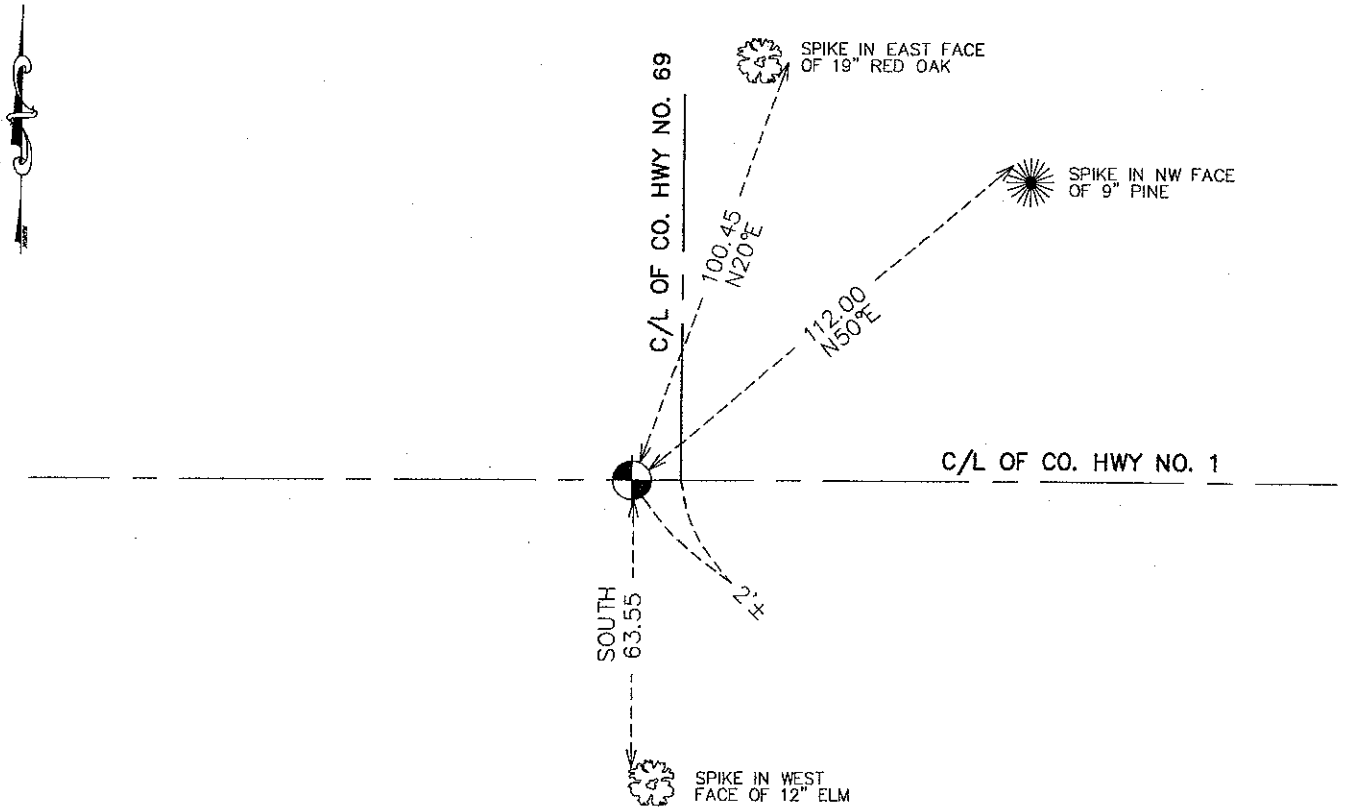
Northing= 150420.63

Easting= 427721.74

Note: NAD 1983, HARN 1996 Adjustment coordinates are NOT compatible with NAD 1983 coordinates

Note: 1 Meter=3937/1200 U.S. Survey Feet

## SKETCH OF REFERENCE TIES



Statement of evidence relative to this corner location is on back of page.

I hereby certify that this document and the data contained herein was prepared by me or under my direct supervision.

*E. J. Rud* 12-21-2011  
Signature Date

Registration No. 9808

- Land Surveyor,     Professional Engineer  
 County Surveyor,     County Engineer

### OFFICE OF THE COUNTY RECORDER

County of \_\_\_\_\_

I hereby certify that this document was filed in the County Recorder's office at \_\_\_\_\_ M. on the \_\_\_\_\_ day of \_\_\_\_\_ A.D., 20\_\_\_\_

County Recorder \_\_\_\_\_

BY \_\_\_\_\_ Deputy

DOCUMENT NO. \_\_\_\_\_

E1/4 CORNER, SEC. 15, T39, R23

**STATEMENT OF EVIDENCE (FROM TIE SHEET 276)**

**IN 1901, THE FORMER COUNTY SURVEYOR, JOHN NELSON, MADE A SURVEY IN SEC. 14, TIEING HIS SURVEY INTO THIS CORNER. IT DOES NOT SAY IF ANYTHING WAS SET. IN 1942, CHARLES HANDSHU ALSO MADE A SURVEY IN SEC. 14. HE STATES THAT HE SET AN IRON PIN AT THIS CORNER. IN 1973, M.B. RUDE FOUND A SPIKE ON THE SURFACE AND SET A KANABEC COUNTY MONUMENT AND FILED A CORNER CERTIFICATE FOR THIS CORNER.**

**IN JULY OF 1987, M.B. RUDE MADE A SURVEY ALONG THE EAST-WEST QUARTER LINE OF SEC. 15 TO LOCATE EXISTING MONUMENTS, LINES OF OCCUPATION AND SEARCH AREAS.**

**ON JULY 28, 1987, M.B. RUDE MADE AN EXCAVATION WITH THE BACKHOE AND FOUND A SANDSTONE WITH A "+" CUT INTO IT.**

**HE ACCEPTED THIS STONE AS THE PERPETUATED CORNER LOCATION AND SET A 7/8" BY 24" CAPPED REBAR IN PLACE OF THE STONE.**

**THIS LOCATION IS ABOUT 0.15 FEET NORTH AND 3.35 FEET EAST OF THE CORNER SET IN 1973. THE CORNER SET IN 1973 WAS REMOVED.**

**ON NOVEMBER 14, 2011 E.G. RUD AND SONS IN DOING A SURVEY IN SEC. 16 RESET THIS CORNER USING GPS COORDINATES ESTABLISHED EARLIER. THE CORNER SET BY M.B. RUDE WAS NOT TIED OUT PRIOR TO MILLING AND OVERLAY ON COUNTY ROAD NO. 1. THIS POSITION AGREED WITH ONE REMAINING TIE AND THE DISTANCE MEASURED TO THE NE CORNER OF SEC. 15 BY BOGART, PETERSON & ASSOC. IN 2006. NEW TIES WERE TAKEN.**