

# CERTIFICATE OF LOCATION OF GOVERNMENT CORNER

NORTH QUARTER Corner of Section 23, Township 39, Range 23, 4TH P.M.  
STATE OF MINNESOTA, County of KANABEC

At the corner location shown on the sketch:  
ON 11/12/2014 FOUND A 1" IRON PIPE.

Kanabec County U.S. Survey Feet Coordinates  
NAD 1983, HARN 1996 Adjustment  
Obtained by RTK GPS Observation

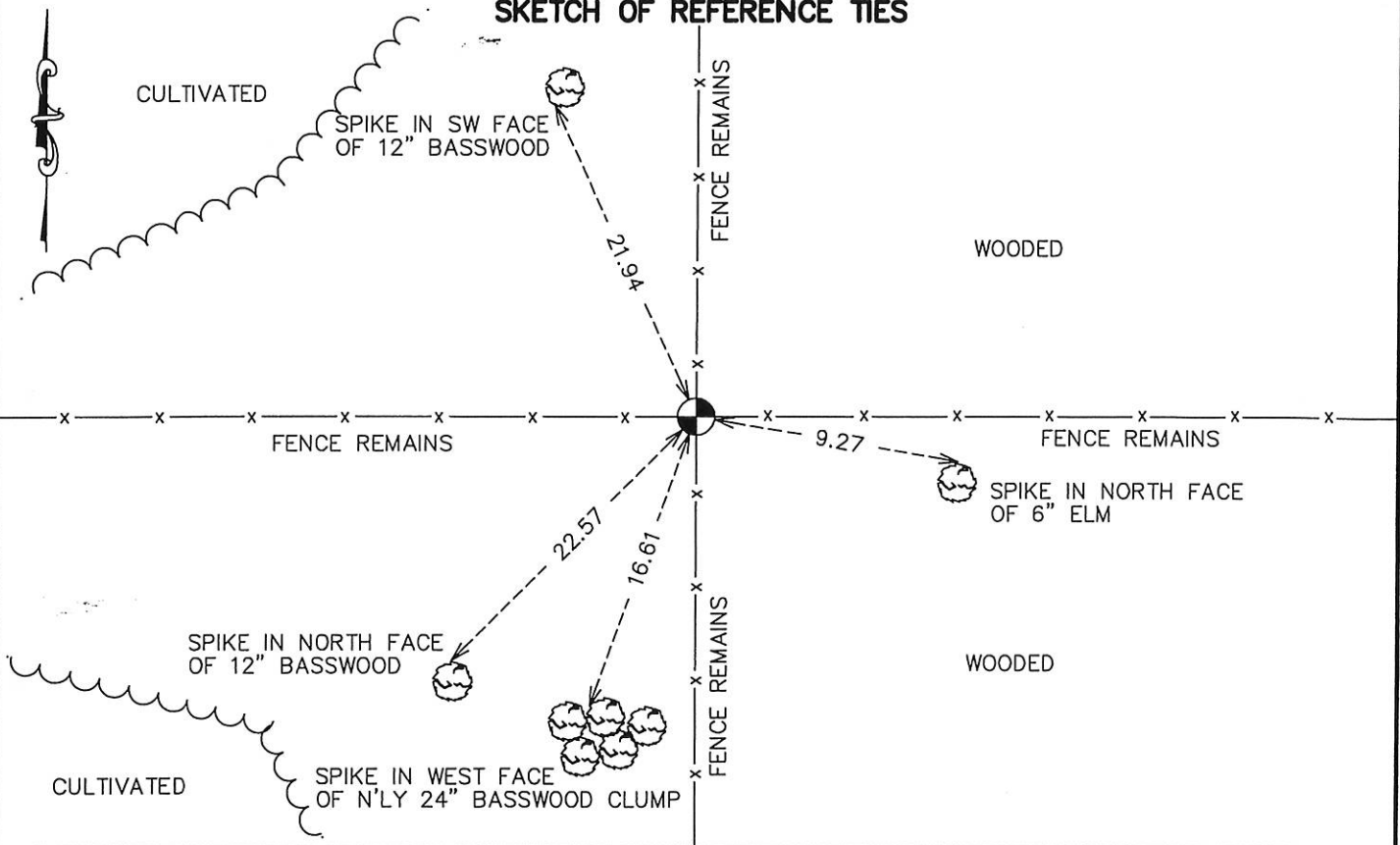
Northing= 147733.77

Easting= 430380.84

Note: NAD 1983, HARN 1996 Adjustment  
coordinates are NOT compatible with  
NAD 1983 coordinates

Note: 1 Meter=3937/1200 U.S. Survey Feet

### SKETCH OF REFERENCE TIES



Statement of evidence relative to this corner location is on back of page.

I hereby certify that this document and the data contained herein was prepared by me or under my direct supervision.

*Ernest Rud*  
Signature

12-10-14  
Date

Registration No. 9808

- Land Surveyor,      [ ] Professional Engineer
- [ ] County Surveyor,    [ ] County Engineer

### OFFICE OF THE COUNTY RECORDER

County of \_\_\_\_\_

I hereby certify that this document was filed in the County Recorder's office at \_\_\_\_\_ M. on the \_\_\_\_\_ day of \_\_\_\_\_ A.D., 20 \_\_\_\_\_

County Recorder \_\_\_\_\_

BY \_\_\_\_\_ Deputy

DOCUMENT NO. \_\_\_\_\_

**STATEMENT OF EVIDENCE**

**DURING THE G.L.O. SURVEY, A WOOD POST WAS SET TO MARK THE CORNER AND BEARING TREES WERE RECORDED AS FOLLOWS:**

**22" PINE BEARING N45°E AT 25 LINKS**

**18" PINE BEARING S35°E AT 12 LINKS**

**NO SUBSEQUENT SURVEYS WERE FOUND AT THE KANABEC COUNTY OFFICES IN MORA, MN.**

**IN 2006, BOGART, PETERSON AND ASSOCIATES (BPA), IN A PRIVATE SURVEY IN SEC. 14, SEARCHED FOR THE ORIGINAL GOVERNMENT CORNER AND ITS ACCESSORIES BUT NONE WERE FOUND. FENCE REMAINS WERE FOUND NEAR THE POSITION OF THE CORNER RUNNING NORTH, SOUTH, EAST AND WEST. THESE FENCE REMAINS WERE FOLLOWED TO A POINT OF INTERSECTION AND NO MONUMENT WAS FOUND. BPA ACCEPTED THIS POSITION AS THE BEST EVIDENCE FOR THE CORNER. REFERENCE TIES WERE RECORDED AT THIS TIME.**

**IN DECEMBER 2014 E.G. RUD AND SONS, INC. IN DOING A SURVEY IN SEC. 23 FOUND THIS IRON PIPE AND ESTABLISHED KANABEC COUNTY COORDINATES ON THIS POSITION.**