

CERTIFICATE OF LOCATION OF GOVERNMENT CORNER

N¹/₄ Corner of Section 26, Township 39, Range 23, 4TH P.M.

STATE OF MINNESOTA, County of KANABEC

At the corner location shown on the sketch:

Found # 7 rebar with aluminium cap.

Kanabec County U.S. Survey Feet Coordinates
NAD 1983, HARN 1996 Adjustment
Obtained by RTK GPS Observation

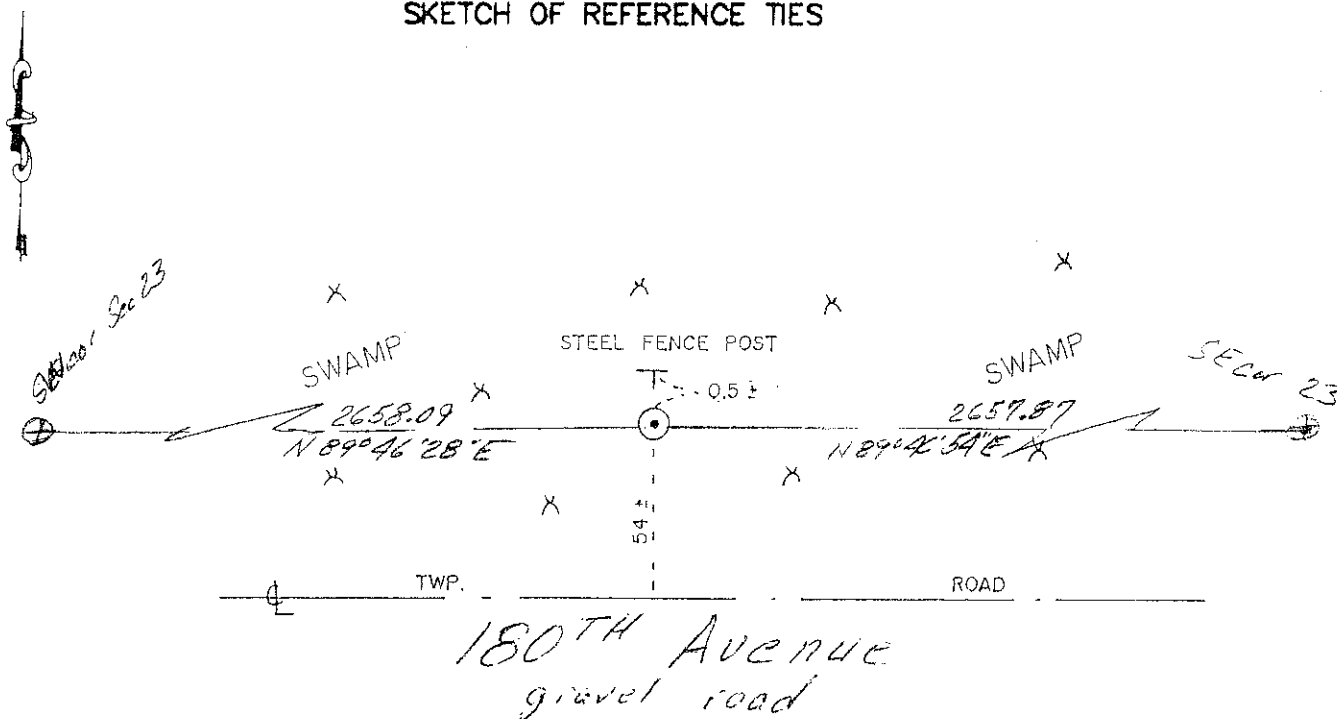
Northing= 142466.30

Easting= 430323.59

Note: NAD 1983, HARN 1996 Adjustment coordinates are NOT compatible with NAD 1983 coordinates

Note: 1 Meter=3937/1200 U.S. Survey Feet

SKETCH OF REFERENCE TIES



Statement of evidence relative to this corner location is on back of page.

I hereby certify that this document and the data contained herein was prepared by me or under my direct supervision.

Ernest Rud
Signature

405-13
Date

Registration No. 9608

- Land Surveyor, Professional Engineer
- County Surveyor, County Engineer

OFFICE OF THE COUNTY RECORDER

County of _____

I hereby certify that this document was filed in the County Recorder's office at _____ M. on the

_____ day of _____ A.D., 20__

County Recorder _____

BY _____ Deputy

DOCUMENT NO. _____

STATEMENT OF EVIDENCE- 3923070

N¹/₄ cor Sec. 26

All of the original Government Bearing Trees are now gone.

There is no resurvey data on file for this corner

In May of 1996, M.B. Rude made a survey around Section 26, Township 39, Range 23, to locate existing monuments, lines of occupation and establish search areas.

There were no lines of occupation in the area of this corner.

There is a township road south of this corner that does not follow the section line.

He made a search for any corner evidence with a metal locator and by probing with a machete. No additional evidence was found.

He set the corner on line and a proportional measurement between the northwest and northeast corners of Section 26, Township 39, Range 23.

On April 5, 2013 E.G. Rud & Sons, inc. found this #7 rebar and established Kanabec County corners on this position. No ties were available.