

CERTIFICATE OF LOCATION OF GOVERNMENT CORNER

SE Corner of Section 22, Township 39, Range 23, 4TH P.M.

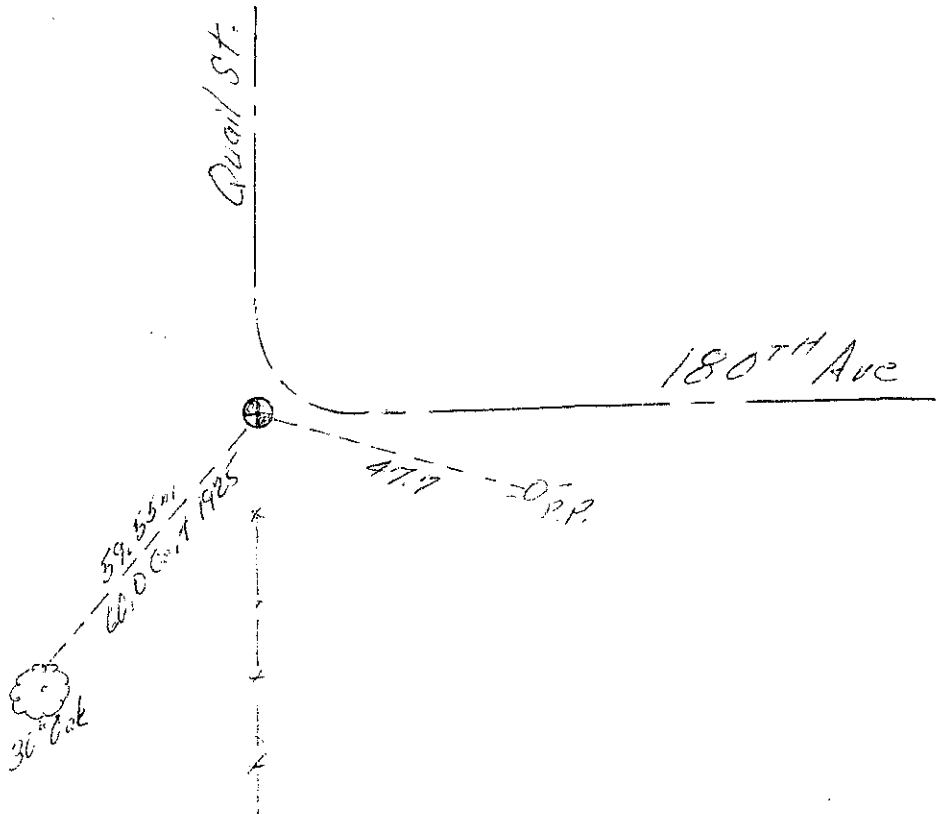
STATE OF MINNESOTA, County of KANABEC

At the corner location shown on the sketch:

*Found aluminum monument @
E's extended & fence running
south*

Kanabec County U.S. Survey Feet Coordinates:
NAD 1983, HARN 1996 Adjustment
Obtained by RTK GPS Observation
Northing= 142455.84
Easting= 427665.52
Note: NAD 1983, HARN 1996 Adjustment
coordinates are NOT compatible with
NAD 1983 coordinates
Note: 1 Meter=3937/1200 U.S. Survey Feet

SKETCH OF REFERENCE TIES



Statement of evidence relative to this corner location is on back of page.

I hereby certify that this document and the data contained herein was prepared by me or under my direct supervision.

Ernest J. Paul 4-05-13
Signature Date

Registration No. 9808

- Land Surveyor, Professional Engineer
- County Surveyor, County Engineer

OFFICE OF THE COUNTY RECORDER

County of _____

I hereby certify that this document was filed in the County Recorder's office at _____ M. on the _____ day of _____ A.D., 20____

County Recorder _____
BY _____ Deputy

DOCUMENT NO. _____

STATEMENT OF EVIDENCE - 3923069

In 1973 M.B. Rude set Kanabec County Monument by lines of occupation and one tie to 30' oak tree per certificate of location on file in the County Engineer's office, dated 1925. He dug for iron pin per 1925 certificate, but could not locate it.

On April 5, 1913 E.G. Rud & Sons, Inc. found the cast aluminum monument at the centerline of roads and established Kanabec County corners on this position.