

CERTIFICATE OF LOCATION OF GOVERNMENT CORNER

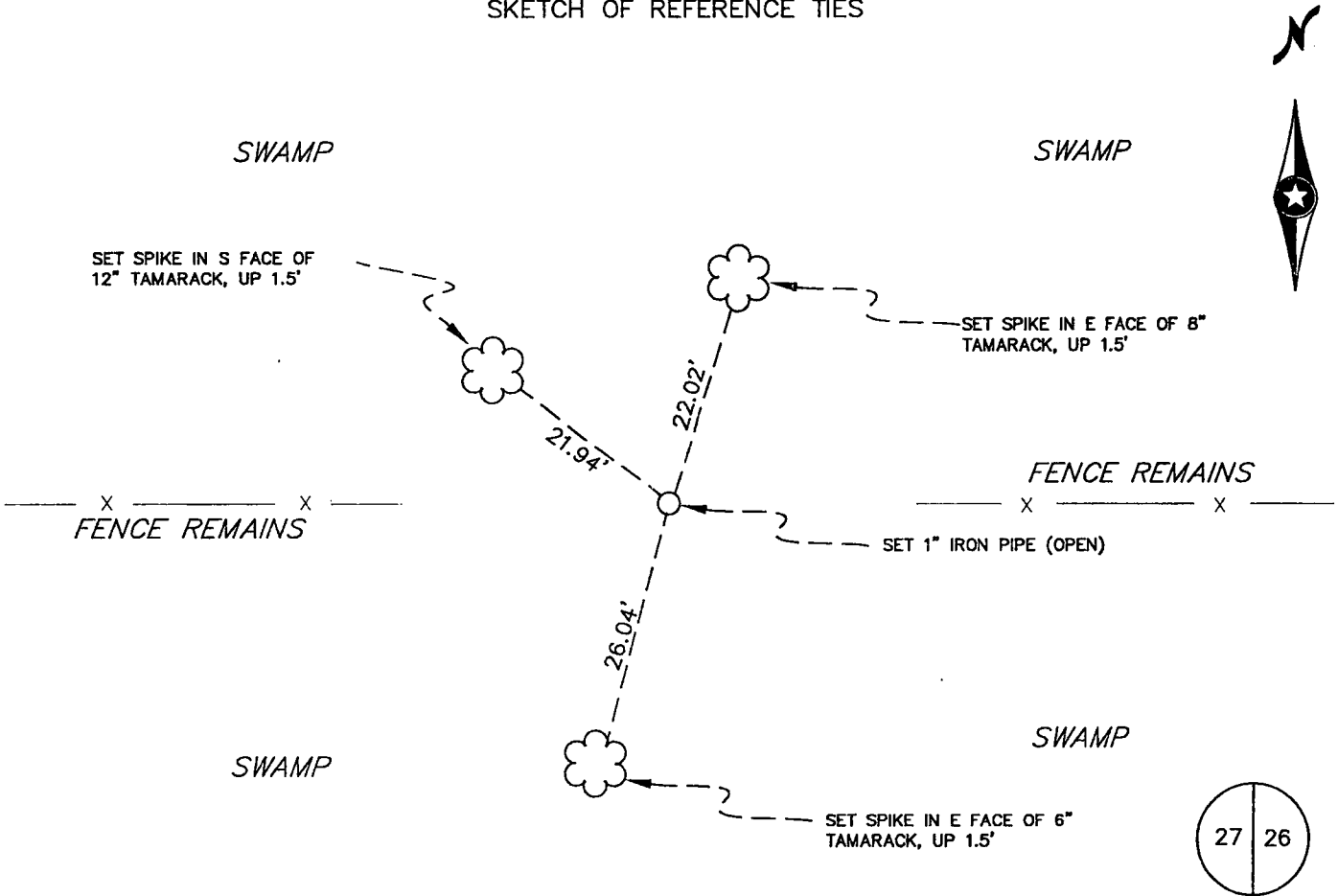
East Quarter Corner of Section 27, Township 39, Range 23, 4th P.M.

STATE OF MINNESOTA, County of KANABEC

At the corner location shown on the sketch:

- On _____ found a _____
DATE
- left monument as found, lowered monument, removed monument (explain)
- On 5-9-06 placed a 1" IRON PIPE (R.L.S. #12236) AT CL/CL
DATE

SKETCH OF REFERENCE TIES



Statement of evidence relative to this corner location is on back of this page.

I hereby certify that this document and the data contained herein was prepared by me or under my direct supervision

David D. Regan 11/11/07
SIGNATURE DATE

Registration No. R.L.S. 12236

Land Surveyor Professional Engineer
 County Surveyor County Engineer

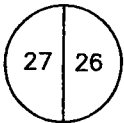
OFFICE OF THE COUNTY RECORDER
County of KANABEC

I hereby certify that this document was filed in the County Recorder's office at 8:00 A . M. on the 18 day of Jan A.D., 2007

County Recorder Shirley Olson

By _____, Deputy

DOCUMENT NO. _____



STATEMENT OF EVIDENCE

East Quarter Corner of Section 27, Township 39 North, Range 23 West, 4th Principal Meridian, Comfort Township, Kanabec County, Minnesota

During the G.L.O. survey, a wood post was set to mark the corner and bearing trees were recorded as follows:

8" Tamarac	East	18 links
10" Tamarac	N 50° W	20 links

No subsequent surveys were found at the Kanabec County Offices in Mora, Minnesota.

In 2005, Bogart, Pederson, and Associates (BPA), in a private survey in Section 27 found a round, wood, sharpened, notched post at the extension of a fence remains running east and west of the corner and the east line of Section 27 from the found Northeast Corner to the found Southeast Corner of Section 27. The post was located 10 feet ± south of the lost or split position. The fence posts east of the corner were square and lying down. A 1 inch iron pipe replaced the post and reference ties were recorded at this time.