

CERTIFICATE OF LOCATION OF GOVERNMENT CORNER

EAST QUARTER Corner of Section 2, Township 39, Range 23, 4TH P.M.

STATE OF MINNESOTA, County of KANABEC

At the corner location shown on the sketch:
FOUND MONUMENT
AND ESTABLISHED G.P.S. COORDINATES ON ITS LOCATION.

Kanabec County U.S. Survey Feet Coordinates
NAD 1983, HARN 1996 Adjustment
Obtained by RTK GPS Observation

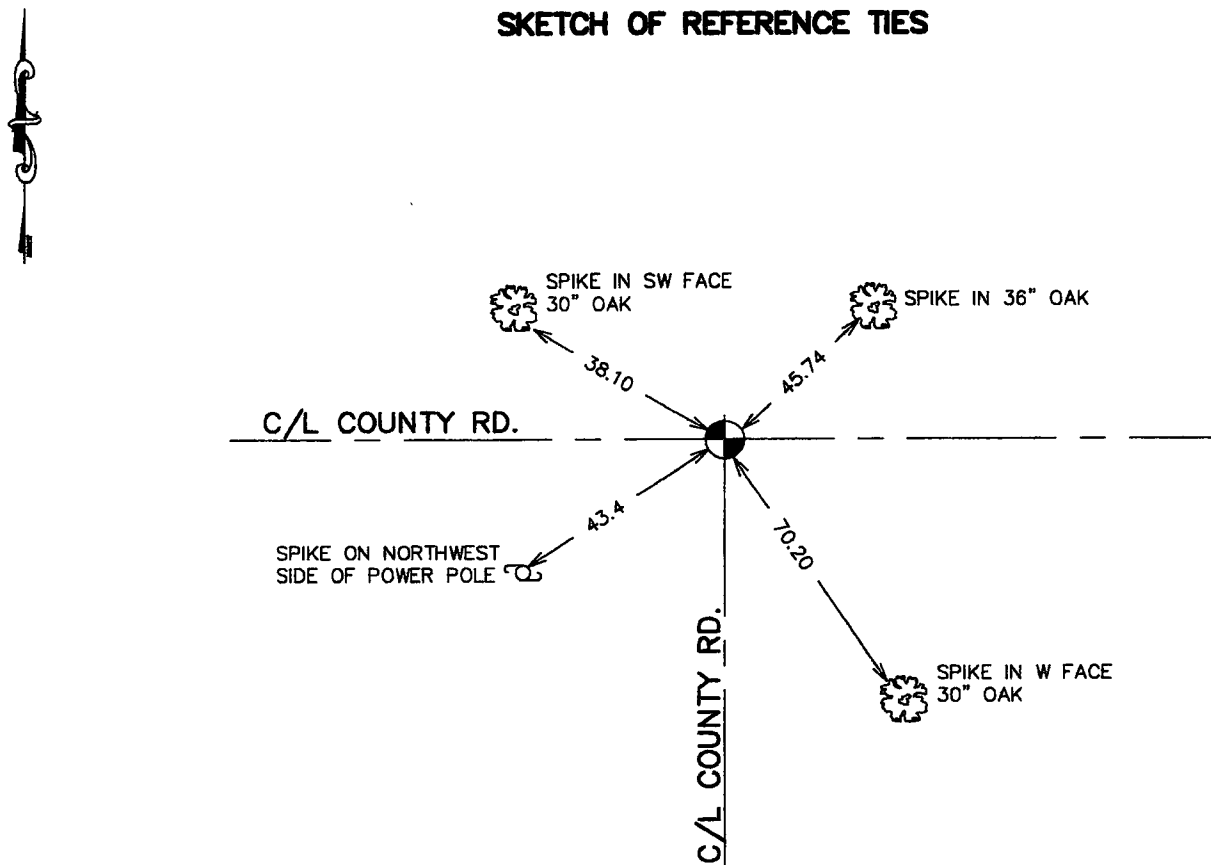
Northing= 161002.98

Easting= 433002.69

Note: NAD 1983, HARN 1996 Adjustment
coordinates are NOT compatible with
NAD 1983 coordinates

Note: 1 Meter=3937/1200 U.S. Survey Feet

SKETCH OF REFERENCE TIES



Statement of evidence relative to this corner location is on back of page.

I hereby certify that this document and the data contained herein was prepared by me or under my direct supervision.

Ernest J. Rud 9-11-2006
Signature Date

Registration No. Minn No 9808

Land Surveyor, Professional Engineer

County Surveyor, County Engineer

OFFICE OF THE COUNTY RECORDER

County of Kanabec

I hereby certify that this document was filed in the County Recorder's office at 8:00 A.M. on the

13 day of Sept A.D., 2006

County Recorder Rhonda Olson

BY _____ Deputy

DOCUMENT NO. _____

NORTHEAST CORNER SECTION 11, T39, R23

STATEMENT OF EVIDENCE

ALL GOVERNMENT TIES ARE GONE

BASSWOOD 8" S20°W 18 LINKS

ELM 10" EAST 5 LINKS

RESURVEY INFORMATION

AUGUST 15, 1903 JOHN NELSON SET A SANDSTONE WITH AN X ON A STRAIGHT LINE AND PROPORTIONAL DISTANCE BETWEEN THE NORTHEAST AND SOUTHEAST SECTION CORNERS. HIS BEARING TREE TO THE CORNER IS ASPEN 8" N60° 45' W 31 LINKS (GONE).

IN 1986 TERRY JOHNSON EXCAVATED WITH A BACKHOE A 15X15X4' HOLE AT THE INTERSECTION OF THE ROADS SOUTH AND EAST. ANY EVIDENCE OF NELSON'S STONE OR THE ORIGINAL CORNER WASN'T FOUND.

A ONE INCH REBAR WITH AN ALUMINUM CAP WAS SET IN A STRAIGHT LINE AND PROPORTIONAL DISTANCE BETWEEN THE SOUTHEAST AND NORTHEAST SECTION CORNERS.

IN AUGUST 2006 E.G. RUD RAN A SURVEY AROUND SECTION 2 AND FOUND THIS MONUMENT. TIES WERE VERIFIED AND ADDITIONAL TIES TAKEN. KANABEC COUNTY COORDINATES WERE ESTABLISHED ON THIS POSITION USING G.P.S. EQUIPMENT.