

CERTIFICATE OF LOCATION OF GOVERNMENT CORNER

NORTHEAST Corner of Section 11, Townshi.p 39, Range 23, 4TH P.M.

STATE OF MINNESOTA, County of KANABEC

At the corner location shown on the sketch:
FOUND MONUMENT
AND ESTABLISHED G.P.S. COORDINATES ON ITS LOCATION.

Kanabec County U.S. Survey Feet Coordinates
NAD 1983, HARN 1996 Adjustment
Obtained by RTK GPS Observation

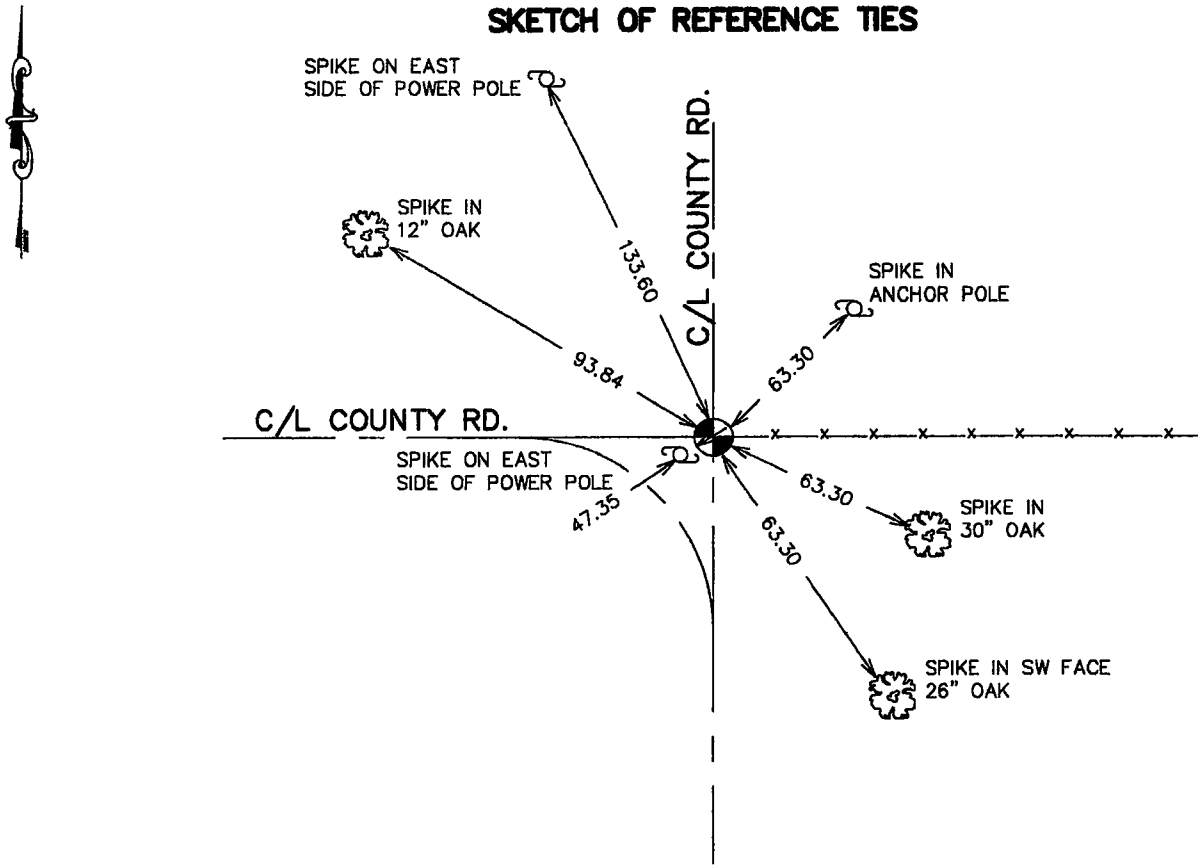
Northing= 158379.00

Easting= 432991.71

Note: NAD 1983, HARN 1996 Adjustment
coordinates are NOT compatible with
NAD 1983 coordinates

Note: 1 Meter=3937/1200 U.S. Survey Feet

SKETCH OF REFERENCE TIES



Statement of evidence relative to this corner location is on back of page.

I hereby certify that this document and the data contained herein was prepared by me or under my direct supervision.

Ernest J. Rud
Signature

9-11-2006
Date

Registration No. Minn No 9808

Land Surveyor, Professional Engineer

County Surveyor, County Engineer

OFFICE OF THE COUNTY RECORDER

County of Kanabec

I hereby certify that this document was filed in the County Recorder's office at 8:00 A M. on the

13th day of Sept A.D., 2006

County Recorder Rhonda Olson

BY _____ Deputy

DOCUMENT NO. _____

NORTHEAST CORNER SECTION 11, T39, R23

STATEMENT OF EVIDENCE

ALL GOVERNMENT TIES ARE GONE

ELM 9" S50°W 15 LINKS

SUGAR 8" N15°W 12 LINKS

BLACK ASH 10° S65°E 30 LINKS

ELM 11" N45°E 18 LINKS

RESURVEY INFORMATION

AUGUST 15, 1903 JOHN NELSON, SURVEYOR, FOUND THIS CORNER. NO NEW TIES WERE ESTABLISHED.

IN 1986 TERRY JOHNSON EXCAVATED WITH A BACKHOE A 15X15X4' HOLE AT THE INTERSECTION OF THE ROAD NORTH-SOUTH AND WEST AND FENCE LINE EAST. AT 3' DEEP IN NATURAL GROUND. A 1" BY 3" WOOD HUB WAS FOUND 1' INTO NATURAL GROUND. THE HUB WAS REMOVED AND A 1" REBAR WAS SET WITH AN ALUMINUM CAP AT THE EXACT POSITION OF THE WOOD HUB. THE WOOD HUB WAS ACCEPTED AS THE BEST EVIDENCE OF THE LOCATION OF THE ORIGINAL CORNER.

IN AUGUST 2006 E.G. RUD RAN A SURVEY AROUND SECTION 2 AND FOUND THIS MONUMENT. TIES WERE VERIFIED AND ADDITIONAL TIES TAKEN. KANABEC COUNTY COORDINATES WERE ESTABLISHED ON THIS POSITION USING G.P.S. EQUIPMENT.