

CERTIFICATE OF LOCATION OF GOVERNMENT CORNER

East Quarter Corner of Section 11, Township 39 North, Range 23 West,
4th Principal Meridian, Kanabec County, State of Minnesota

At the corner location shown on the sketch:
On 2/13/2023 set a large Mag Spike in new blacktop surface.

Kanabec County U.S. Survey Feet Coordinates
NAD 1983, HARN 1996 Adjustment
Obtained by RTK GPS observation
Northing: 155718.3324
Easting: 432996.3668

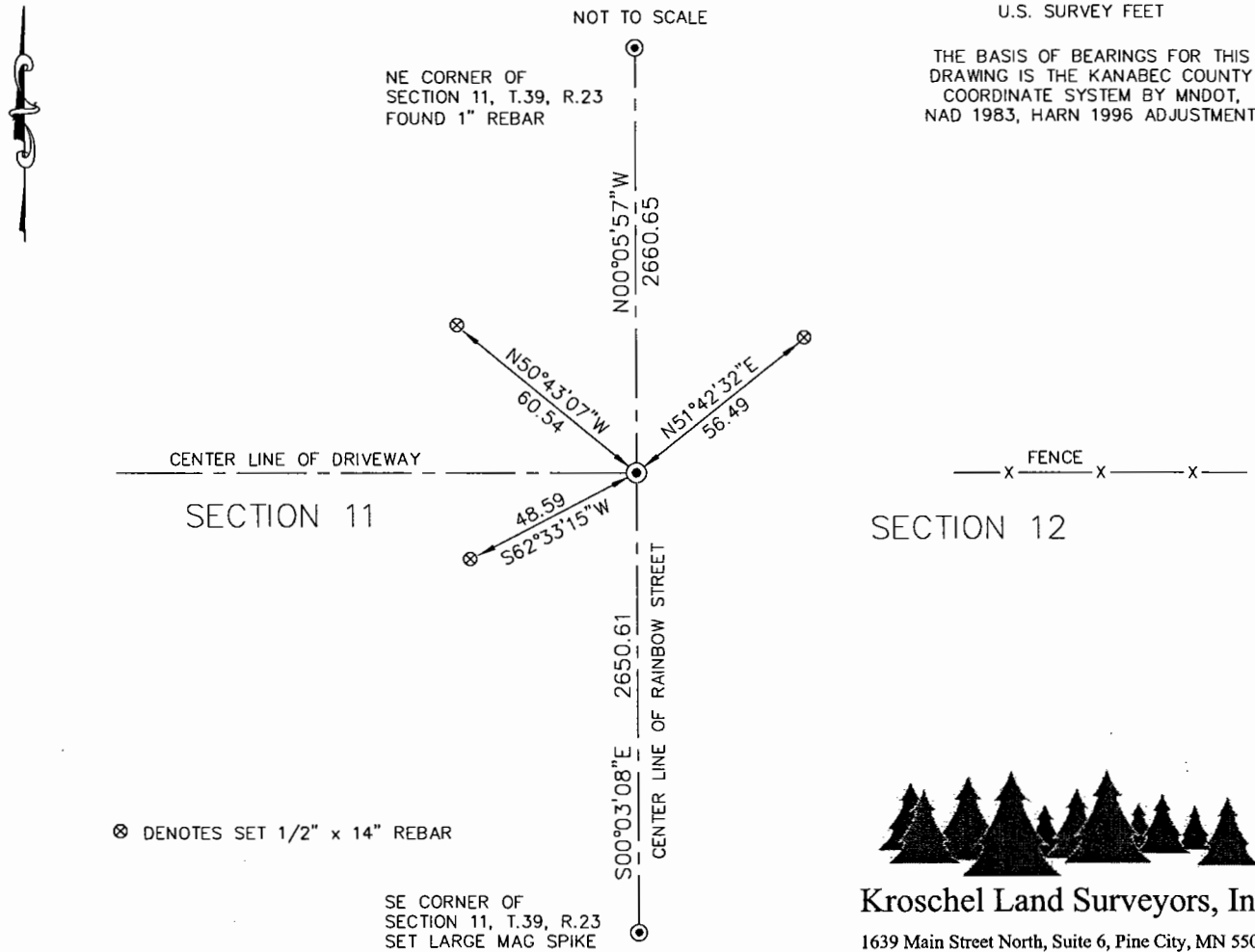
Note: NAD 1983, HARN 1996 Adjustment coordinates are NOT compatible with NAD 1983 coordinates
Note: 1 Meter = 3937/1200 U.S. Survey Feet

SKETCH OF REFERENCE TIES

NOT TO SCALE

DISTANCE UNITS FOR THIS DRAWING IS
U.S. SURVEY FEET

THE BASIS OF BEARINGS FOR THIS
DRAWING IS THE KANABEC COUNTY
COORDINATE SYSTEM BY MNDOT,
NAD 1983, HARN 1996 ADJUSTMENT



Kroschel Land Surveyors, Inc.
1639 Main Street North, Suite 6, Pine City, MN 55063
Phone: 320-629-3267 Fax: 320-629-0176

Statement of evidence relative to this corner location is on back of page.

I hereby certify that this report was prepared by me or under my direct supervision, that the United States public land survey monument record is correct and complete to the best of my knowledge and belief, and that I am a duly Licensed Land Surveyor under the laws of the State of Minnesota.

Tyler J. Kroschel, County Surveyor

License No. 44490

3-2-2023

Date

OFFICE OF THE COUNTY RECORDER

County of Kanabec

I hereby certify that this document was filed in the County Recorder's office at _____ .M. on the _____ day of _____ A.D., 20____
County Recorder _____

_____, Deputy

DOCUMENT NO. _____

Statement of Evidence:

In September of 1855, Deputy Surveyor Silas Barnard set a post to mark the East Quarter Corner of Section 11, Township 39 North, Range 23 West, 4th Principal Meridian.

Reference ties were taken to:

- 11 inch Elm at South 40 degrees West a distance of 5 links
- 12 inch Sugar at East a distance of 15 links

All of the original Government corner evidence was searched for. None was found.

1901- County Surveyor John Nelson made a survey around Section 12, filed in Book A of Surveys, Page 298. Nelson measured a distance of 80.56 chains along the west line of Section 12 and established the West Quarter corner halfway between the Northwest and Southwest corners. He does not indicate what type of monument was placed at the West Quarter corner of Section 11.

1901- County Surveyor John Nelson filed a survey in Book 1 of 2 of Surveys, Page 8 of a road along the east line of Section 11. Nelson measured a distance of 80.56 chains along the east line of Section 11, but gives no indication of any monument at the East Quarter corner of Section 11.

1908- A Township Supervisor's Road Order was filed in the Office of the County Auditor opening a road beginning at the East Quarter corner of Section 11 and running west 20 chains. Surveyor T.B. Vickery made a survey of the road but does not indicate any type of monument found or set at the East Quarter corner of Section 11.

1956- County Highway Department construction plans for County Highway No. 5 show the approximate East Quarter corner of Section 11 at the intersection of the centerline of the County Highway and a fence line east. The plan also shows a driveway running west from the corner. The plan shows a subcut of about 2 feet in this area.

In November 2016, I made a survey along the east line of Section 11, Township 39 North, Range 23 West, 4th Principal Meridian for Kanabec County Highway Department to locate existing monuments, lines of occupation and establish search areas.

On 11/09/2016 we made a 10' x 15' x 5' deep excavation search with the County Backhoe at the centerline of the County Highway and a fence line east. No evidence of the corner was found in the excavation.

On 2/13/2023 I set a Large Mag Spike at the intersection of the center line of the County Highway and a fence line east. This location also fits the center line of an existing driveway running west from this corner. This location was determined to be the best available evidence of the original corner location. Established reference ties and assigned Kanabec County Coordinates.



Kroschel Land Surveyors, Inc.

1639 Main Street North, Suite 6, Pine City, MN 55063
Phone: 320-629-3267 Fax: 320-629-0176