

CERTIFICATE OF LOCATION OF GOVERNMENT CORNER

NORTH QUARTER Corner of Section 13, Township 39, Range 23, 4TH P.M.

STATE OF MINNESOTA, County of KANABEC

At the corner location shown on the sketch:
 FOUND THIS MOUMENT
 AND ESTABLISHED G.P.S. COORDINATES ON ITS LOCATION.

Kanabec County U.S. Survey Feet Coordinates
 NAD 1983, HARN 1996 Adjustment
 Obtained by RTK GPS Observation

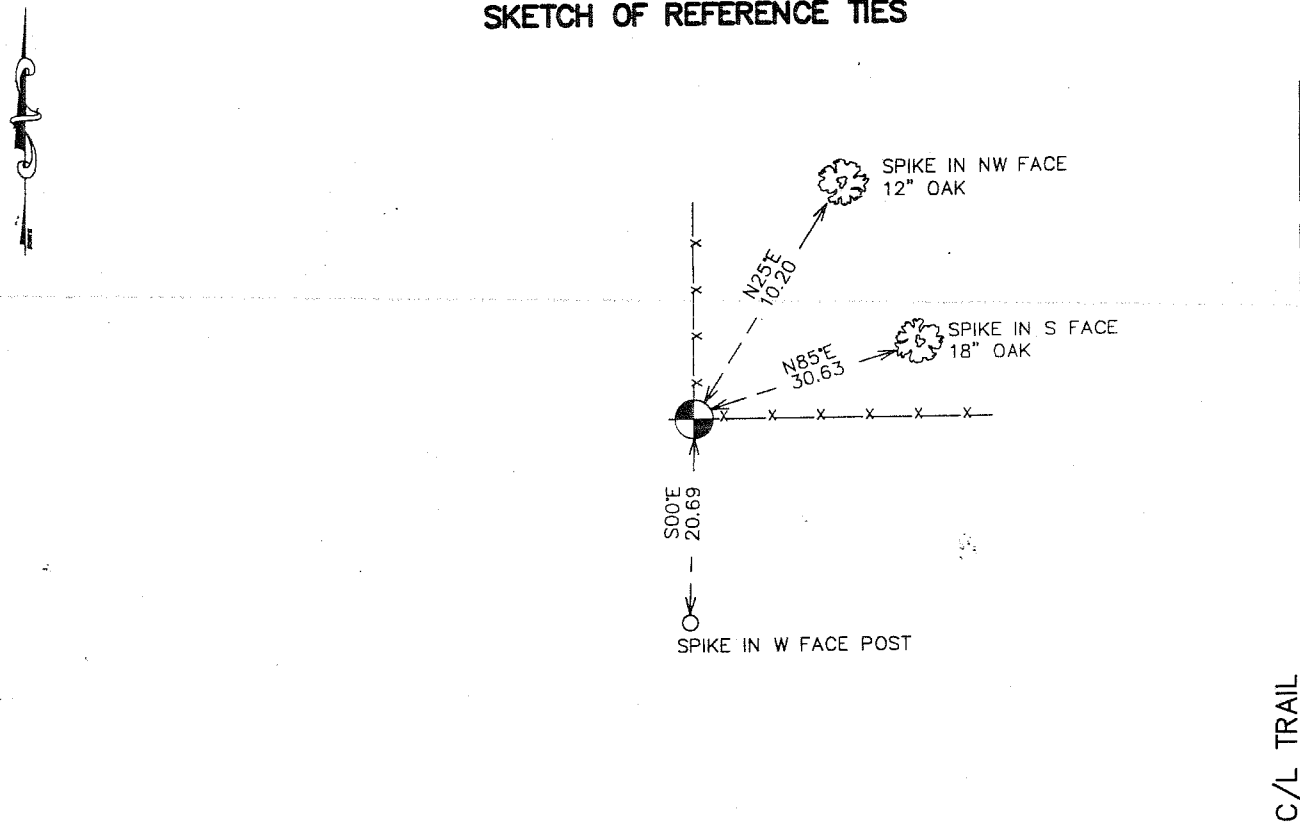
Northing= 153082.74

Easting= 435643.53

Note: NAD 1983, HARN 1996 Adjustment
 coordinates are NOT compatible with
 NAD 1983 coordinates

Note: 1 Meter=3937/1200 U.S. Survey Feet

SKETCH OF REFERENCE TIES



Statement of evidence relative to this corner location is on back of page.

I hereby certify that this document and the data contained herein was prepared by me or under my direct supervision.

Ernest Rud
 Signature

2-22-2007
 Date

Registration No. Minn No 9808

Land Surveyor, Professional Engineer

County Surveyor, County Engineer

OFFICE OF THE COUNTY RECORDER

County of _____

I hereby certify that this document was filed in the County Recorder's office at _____ M. on the _____ day of _____ A.D., 20____

County Recorder _____

BY _____ Deputy

DOCUMENT NO. _____

NORTH QUARTER CORNER SECTION 13, T39, R23

STATEMENT OF EVIDENCE

THE ORIGINAL CORNER WAS SET BY DEPUTY SURVEYOR SILAS BARNARD IN SEPTEMBER 1855. EVIDENCE TO THE ORIGINAL CORNER OR BEARING TREES NO LONGER REMAIN.

THIS CORNER FALLS AT A FENCE INTERSECTION RUNNING EAST AND NORTH.

THERE IS A SURVEY RECORDED IN BOOK A OF SURVEYS PAGE 297 AND 298 MADE BY JOHN NELSON ON APRIL 24, 1907.

HE REESTABLISHED THIS CORNER BUT DOES NOT SAY WHAT HE SET. WE SEARCHED THE AREA BUT COULD NOT FIND ANY EVIDENCE FOR THE CORNER. THEREFOR WE SET A #7 REBAR 24" LONG WITH AN ALUMINUM CAP ON THE ~~NORTH~~^{SOUTH} SIDE OF THE FENCE CORNER. THIS FIT WITHIN 8.2 FEET OF A LINE AND SPLIT WHICH JOHN NELSON SHOWED ON HIS SURVEY. WE ESTABLISHED KANABEC COUNTY COORDINATES ON THIS POSITION USING G.P.S. EQUIPMENT AND TOOK 3 TIES TO THIS CORNER.