

CERTIFICATE OF LOCATION OF GOVERNMENT CORNER

Northeast Corner of Section 14, Township 39 North, Range 23 West,
4th Principal Meridian, Kanabec County, State of Minnesota

At the corner location shown on the sketch:
On 11/09/2016 found a 8" x 8" x 18" tall Hardstone with no markings. Said Hardstone was standing in an upright position.
On 2/13/2023 set a large Mag Spike in new blacktop surface in its place.

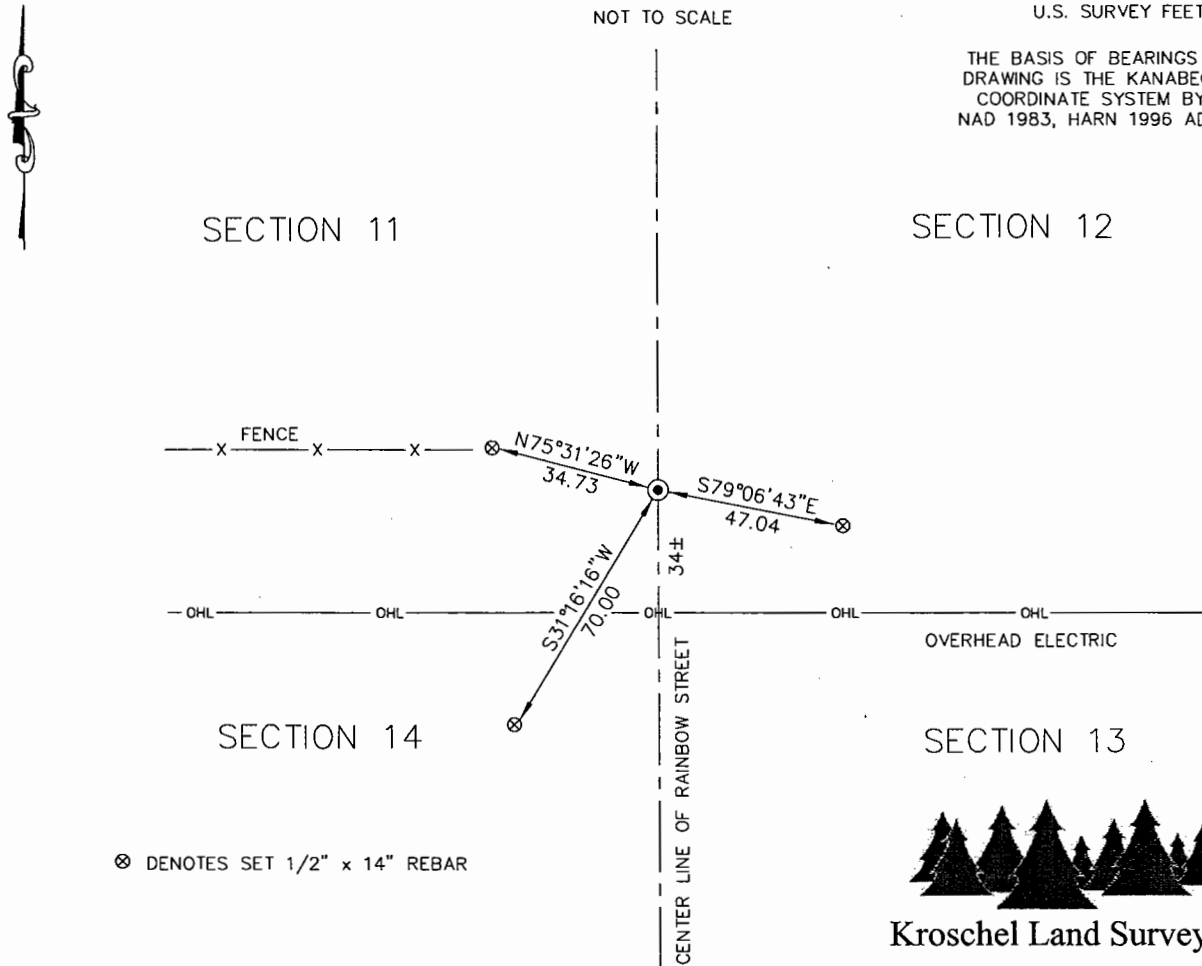
Kanabec County U.S. Survey Feet Coordinates
NAD 1983, HARN 1996 Adjustment
Obtained by RTK GPS observation
Northing: 153067.7285
Easting: 432998.7845
Note: NAD 1983, HARN 1996 Adjustment coordinates are NOT compatible with NAD 1983 coordinates
Note: 1 Meter = 3937/1200 U.S. Survey Feet

SKETCH OF REFERENCE TIES

NOT TO SCALE

DISTANCE UNITS FOR THIS DRAWING IS U.S. SURVEY FEET

THE BASIS OF BEARINGS FOR THIS DRAWING IS THE KANABEC COUNTY COORDINATE SYSTEM BY MNDOT, NAD 1983, HARN 1996 ADJUSTMENT



⊗ DENOTES SET 1/2" x 14" REBAR



Kroschel Land Surveyors, Inc.

1639 Main Street North, Suite 6, Pine City, MN 55063
Phone: 320-629-3267 Fax: 320-629-0176

Statement of evidence relative to this corner location is on back of page.

I hereby certify that this report was prepared by me or under my direct supervision, that the United States public land survey monument record is correct and complete to the best of my knowledge and belief, and that I am a duly Licensed Land Surveyor under the laws of the State of Minnesota.

Tyler J. Kroschel, County Surveyor

License No. 44490

3-2-2023

Date

OFFICE OF THE COUNTY RECORDER

County of Kanabec

I hereby certify that this document was filed in the County Recorder's office at _____ .M. on the _____ day of _____ A.D., 20____
County Recorder _____

_____, Deputy

DOCUMENT NO. _____

Statement of Evidence:

In September of 1855, Deputy Surveyor Silas Barnard set a post to mark the Northeast Corner of Section 14, Township 39 North, Range 23 West, 4th Principal Meridian.

Reference ties were taken to:

- 7 inch Tamarack at South 10 degrees West a distance of 40 links
- 9 inch Tamarack at North 48 degrees West a distance of 60 links
- 7 inch Tamarack at North 40 degrees East a distance of 25 links
- Tamarack at South 70 degrees East a distance of 50 links

All of the original Government corner evidence was searched for. None was found.

1901— County Surveyor John Nelson made a survey around Section 12, filed in Book A of Surveys, Page 298. Nelson measured a distance of 80.56 chains along the west line of Section 12 and 80.09 chains along the south line of Section 12. He indicates the Southwest corner of Section 12 was found from a previous survey, but does not mention what type of monument he found.

1901— County Surveyor John Nelson filed a survey in Book 1 of 2 of Surveys, Page 8 of a road along the east line of Sections 11 and 14. Nelson measured a distance of 80.56 chains along the east line of Section 11 and 40.28 chains along the east line of the Northeast Quarter of Section 14, but gives no indication of any monument at the Northeast corner of Section 14.

1956— County Highway Department construction plans for County Highway No. 5 do not show any measurements or occupation lines at this corner. The plans show the road was raised about 2 feet above the existing road profile.

In November 2016, I made a survey along the east line of Sections 11 and 14, Township 39 North, Range 23 West, 4th Principal Meridian for Kanabec County Highway Department to locate existing monuments, lines of occupation and establish search areas.

On 11/09/2016 we made a 10' x 15' x 6' deep excavation search with the County Backhoe at the centerline of the County Highway and halfway between the East Quarter corner of Section 11 and the East Quarter corner of Section 14. At an approximate depth of 6 feet (1 foot into the natural ground) we found an 8" x 8" x 18" Hardstone with no markings. The found Hardstone was standing upright. No other evidence was found in the excavation. The found Hardstone fit Nelson's distance to the South Quarter corner of Section 12 within 2 feet. It also fits Nelson's prorated distance between the East Quarter corner of Section 11 and the East Quarter corner of Section 14 within 1 foot.

On 2/13/2023 I set a Large Mag Spike in the new blacktop surface in place of the found Hardstone. This location was determined to be the best available evidence of the original corner location. Established reference ties and assigned Kanabec County Coordinates.



Kroschel Land Surveyors, Inc.

1639 Main Street North, Suite 6, Pine City, MN 55063
Phone: 320-629-3267 Fax: 320-629-0176