

CERTIFICATE OF LOCATION OF GOVERNMENT CORNER

E 1/4 Corner of Section 14, Township 39, Range 23, 4th P.M.

STATE OF MINNESOTA, County of KANABEC

At the corner location shown on the sketch:

Set 1/2" iron pipe from ties & Co. Rd. survey data

Kanabec County U.S. Survey Feet Coordinates
NAD 1983, HARN 1996 Adjustment
Obtained by RTK GPS Observation

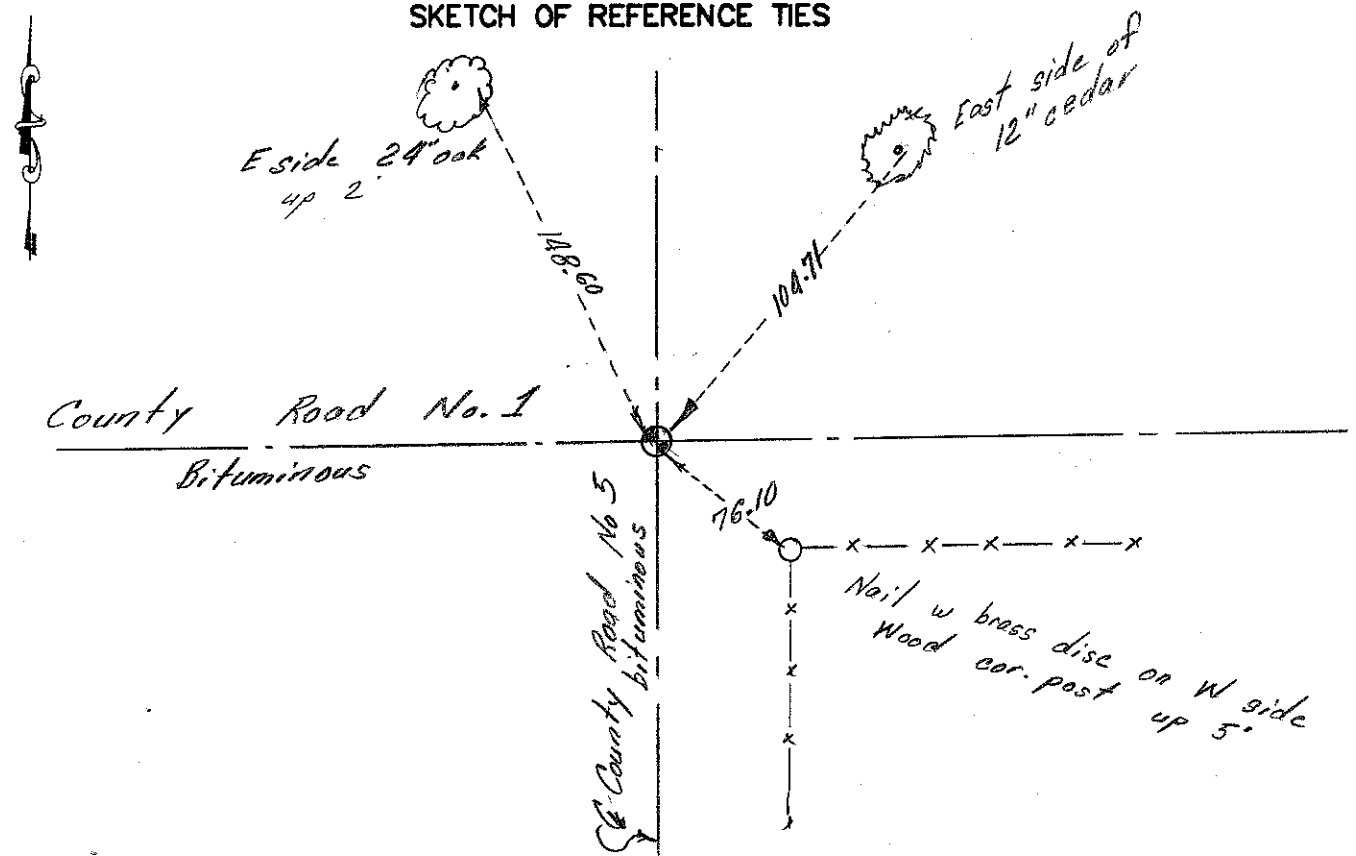
Northing= 150419.11

Easting= 433000.61

Note: NAD 1983, HARN 1996 Adjustment coordinates are NOT compatible with NAD 1983 coordinates

Note: 1 Meter=3937/1200 U.S. Survey Feet

SKETCH OF REFERENCE TIES



Statement of evidence relative to this corner location is on back of page.

I hereby certify that this document and the data contained herein was prepared by me or under my direct supervision.

Ernest J. Rud 8-8-12
Signature Date

Registration No. Miss No. 9808

- Land Surveyor, Professional Engineer
- County Surveyor, County Engineer

OFFICE OF THE COUNTY RECORDER

County of _____

I hereby certify that this document was filed in the County Recorder's office at _____ M. on the _____ day of _____ A.D., 20____

County Recorder _____

BY _____ Deputy

DOCUMENT NO. _____

In 1975 M.B. Rude found that two of Chas Handschu's ties were still there but that the exact location of the tie was gone, we then found nail in the road that fit the approximate location of the ties and the centerline of the road so we set the monument from that. Handschu's survey was done in 1946 and he made no record of what he set.

On January 11, 2000 Wayne Clausen, RLS #7112, found a P.K. nail at this location and established ties. In August 2011 E.G. Rud & Sons reestablished this corner by using 3 of Wayne Clausen's ties and mathematical information M.B. Rude determined in his survey for County Road 5. A ½" iron pipe was set and Kanabec County coordinates established on this position.
