

CERTIFICATE OF LOCATION OF GOVERNMENT CORNER

E 1/4 Corner of Section 23, Township 39, Range 23, 4TH P.M.

STATE OF MINNESOTA, County of KANABEC

At the corner location shown on the sketch:

Found Conc. nail @ EE. Set 1/2" iron pipe from survey info on Co Rd. #5

Kanabec County U.S. Survey Feet Coordinate:
NAD 1983, HARN 1996 Adjustment
Obtained by RTK GPS Observation

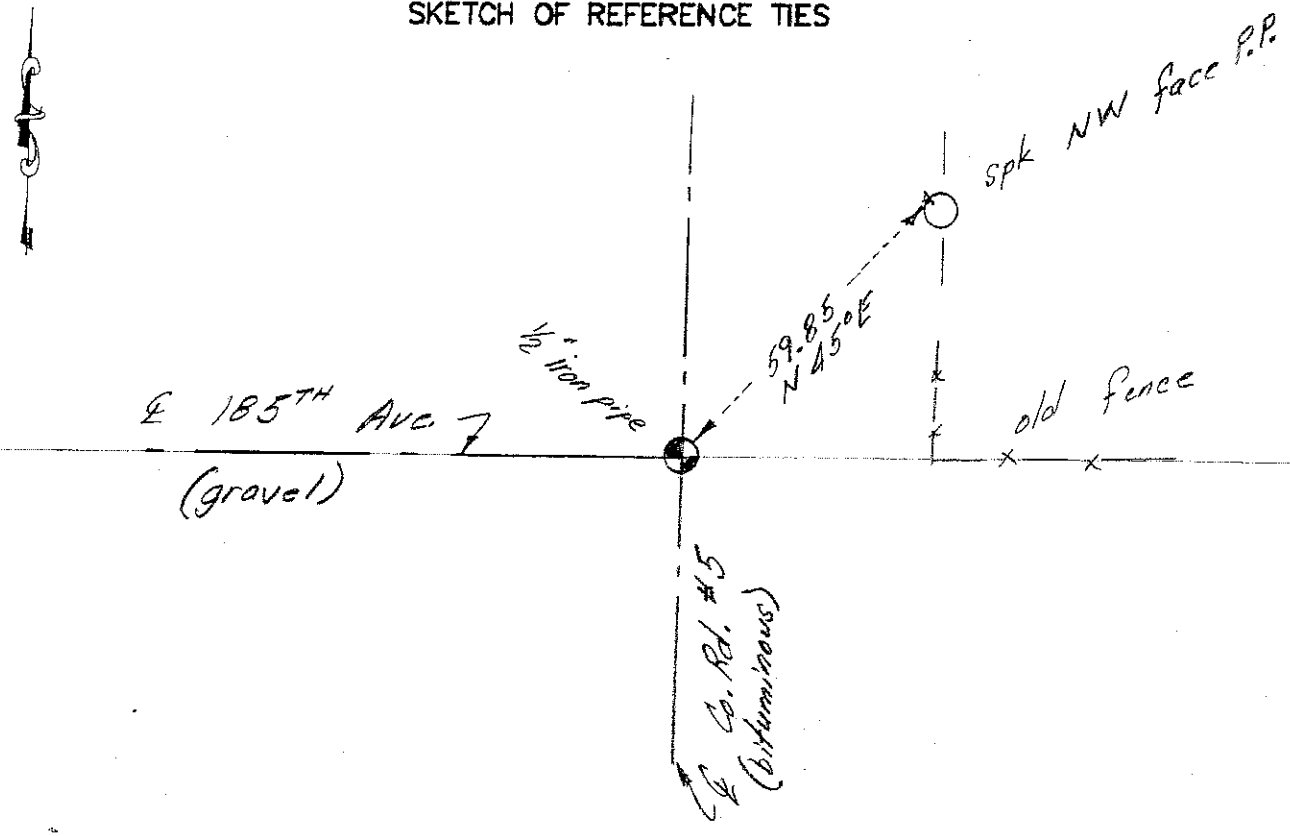
Northing= 145114.21

Easting= 432987.66

Note: NAD 1983, HARN 1996 Adjustment coordinates are NOT compatible with NAD 1983 coordinates

Note: 1 Meter=3937/1200 U.S. Survey Feet

SKETCH OF REFERENCE TIES



Statement of evidence relative to this corner location is on back of page.

I hereby certify that this document and the data contained herein was prepared by me or under my direct supervision.

Ernest Hrud 8-8-2012
Signature Date

Registration No. 9808

- Land Surveyor, Professional Engineer
- County Surveyor, County Engineer

OFFICE OF THE COUNTY RECORDER

County of _____

I hereby certify that this document was filed in the County Recorder's office at _____ M. on the

_____ day of _____ A.D., 20__

County Recorder _____

BY _____ Deputy

DOCUMENT NO. _____

STATEMENT OF EVIDENCE: EAST ¼ CORNER 23-39-23 3923055

In 1975 a monument was set from M.B. Rude's survey of County Road No. 5. He said that the position of the spike was good for the corner. Place of spike fit the occupation line to the East and the centerline of the North-South and West roads.

On August 8, 2012 E.G. Rud & Sons in doing a survey in Section 24 found a concrete nail at centerline centerline intersection of these two roads. None of the ties taken by M.B. Rude in 1975 remained. This concrete nail fit the mathematical information established by M.B. Rude from the East ¼ corner Section 14 to Northeast corner of Section 26. A ½" iron pipe was set, new ties taken and Kanabec County coordinates established.