

CERTIFICATE OF LOCATION OF GOVERNMENT CORNER

NE Corner of Section 26, Township 39, Range 23, 4TH P.M.
 STATE OF MINNESOTA, County of KANABEC

At the corner location shown on the sketch:

*found a cast iron monument in
 E of road on 7-31-2012*

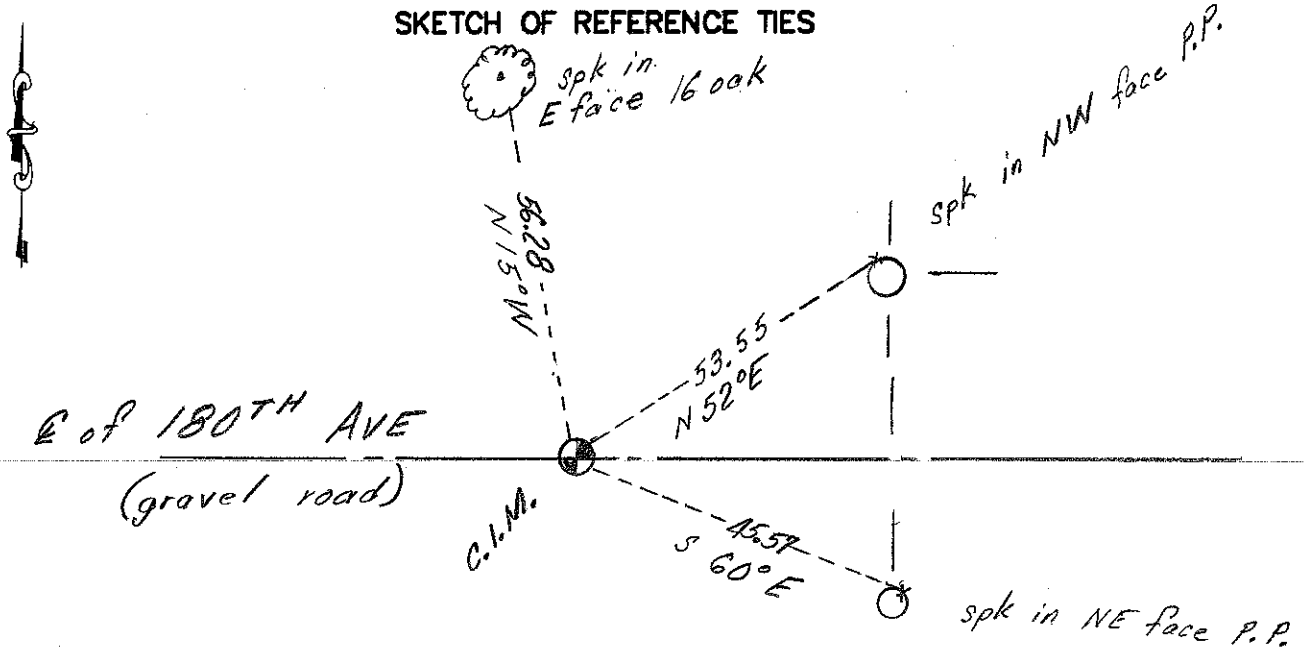
Kanabec County U.S. Survey Feet Coordinates
 NAD 1983, HARN 1996 Adjustment
 Obtained by RTK GPS Observation

Northing= 142476.42
 Easting= 432981.44

Note: NAD 1983, HARN 1996 Adjustment
 coordinates are NOT compatible with
 NAD 1983 coordinates

Note: 1 Meter=3937/1200 U.S. Survey Feet

SKETCH OF REFERENCE TIES



Statement of evidence relative to this corner location is on back of page.

I hereby certify that this document and the data contained herein was prepared by me or under my direct supervision.

 Signature Date

Registration No. _____

- Land Surveyor, Professional Engineer
 County Surveyor, County Engineer

OFFICE OF THE COUNTY RECORDER

County of _____

I hereby certify that this document was filed in the County Recorder's office at _____ M. on the

_____ day of _____ A.D., 20__

County Recorder _____

BY _____ Deputy

DOCUMENT NO. _____

STATEMENT OF EVIDENCE: NORTHEAST CORNER 26-39-23 3923053

In 1973 M.B. Rude could not locate iron pin per certificate of location on file at County Engineer' office, dated 1925. Ties to pin are also gone. Set Kanabec County monument lines of occupation and area resident testimony. Fits centerline of East and West road and centerline of road North extended South and fence line South.

In 2012 E.G. Rud & Sons did a survey in the East ½ of Section 24 and found a cast iron monument. This monument fit one remaining tie and the mathematical information M.B. Rude measured in 1973. New ties were taken and Kanabec County coordinates established on this corner.
