

CERTIFICATE OF LOCATION OF GOVERNMENT CORNER

NE Corner of Section 35, Township 39, Range 23, 4TH P.M.
STATE OF MINNESOTA, County of KANABEC

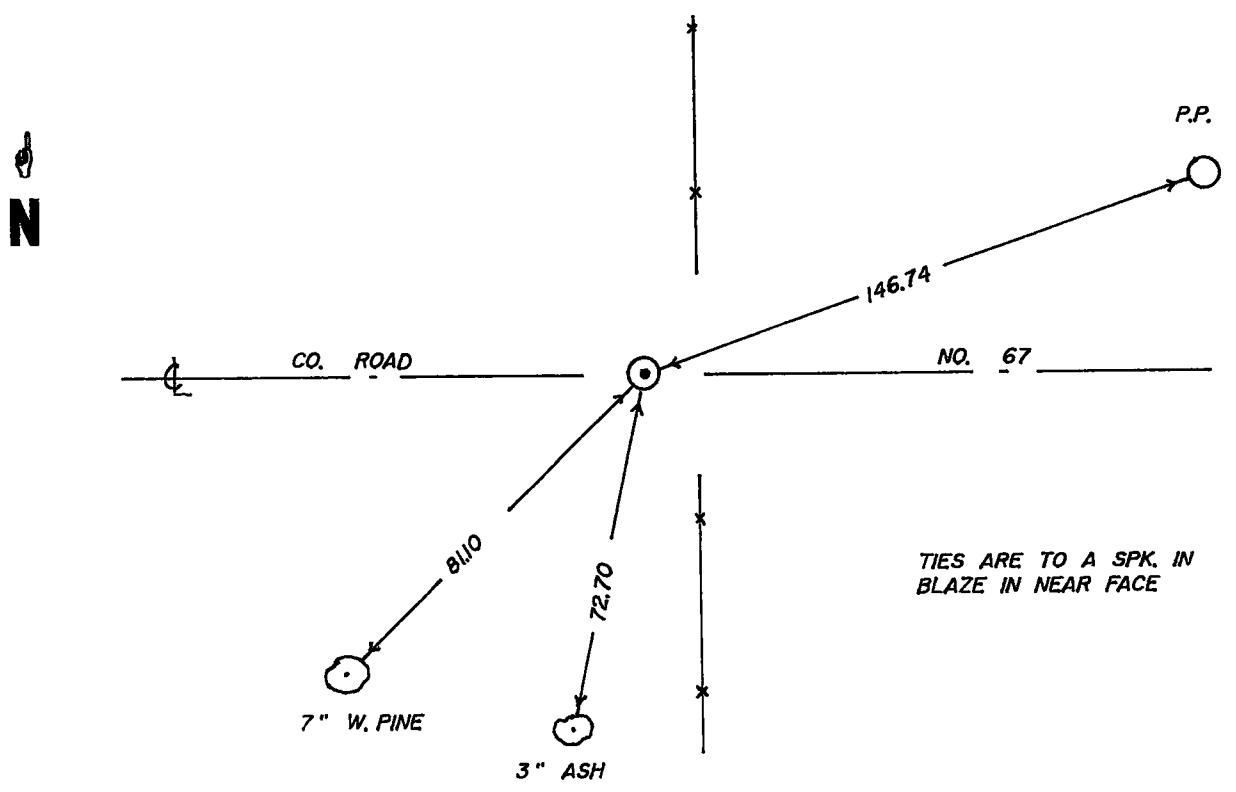
At the corner location shown on the sketch

On 5 - 28 - 96 found a 4" POINTED POST
Date

left monument as found, lowered monument, removed monument (explain)

On 5 - 28 - 96 placed a 7/8" x 24" CAPPED REBAR
Date

SKETCH OF REFERENCE TIES



TIES ARE TO A SPK. IN BLAZE IN NEAR FACE

Statement of evidence relative to this corner location is on back of page.

I hereby certify that this document and the data contained herein was prepared by me or under my direct supervision.

[Signature] 2-1-96
Signature Date

Registration No. 8195

Land Surveyor, Professional Engineer
 County Surveyor, County Engineer

OFFICE OF THE COUNTY RECORDER

County of Kanabec

I hereby certify that this document was filed in the County Recorder's office at 2:00 P M. on the

23rd day of January A.D., 19 97

County Recorder Rhonda A. Olson

By _____ Deputy

DOCUMENT NO. _____

87/35

STATEMENT OF EVIDENCE

All of the original Government Bearing Trees are now gone.

In February of 1920, George Jenks, found a old post and set a stone with a "+" mark, per the Certificate No. 87 filed at the County Recorder's Office on March 31, 1925.

On February 16, 1967, Leo B. Shaw set a railroad spike, per the Certificate on file at the County Recorder's Office.

In May of 1996, we made a survey around Section 26, Township 39, Range 23, to locate existing monuments, lines of occupation and establish search areas.

On May 22, 1996, we made a 3' by 12' by 15' excavation with a backhoe and found the bottom of a 4" pointed wooden post down 2½ feet below the existing road surface.

We accepted the found wooden post as the perpetuated original corner location.