

CERTIFICATE OF LOCATION OF GOVERNMENT CORNER

Northeast Corner of Section 4, Township 38 North, Range 23 West,
4th Principal Meridian, Kanabec County, State of Minnesota

At the corner location shown on the sketch:
On 10/24/2012 set a 1/2" x 20" Iron Pipe with Aluminum
Cap in place of a found 13" x 13" x 13" Hardstone with Cross
Mark.

Kanabec County U.S. Survey Feet Coordinates
NAD 1983, HARN 1996 Adjustment
Obtained by RTK GPS observation
Northing: 131961.6948
Easting: 422468.9518

Note: NAD 1983, HARN 1996 Adjustment
coordinates are NOT compatible with
NAD 1983 coordinates

Note: 1 Meter = 3937/1200 U.S. Survey Feet

SKETCH OF REFERENCE TIES

BEARINGS SHOWN TO REFERENCE TIES
ARE MAGNETIC COMPASS BEARINGS
DISTANCE UNITS FOR THIS DRAWING IS
U.S. SURVEY FEET

KROSCHER LAND SURVEYORS, INC.
ASSUMES NO LIABILITY FOR THE ACCURACY
OF THE GPS COORDINATES SHOWN HEREON.
ALL COORDINATES AND DIMENSIONS
SHOULD BE FIELD VERIFIED BY THE USER.

NOT TO SCALE

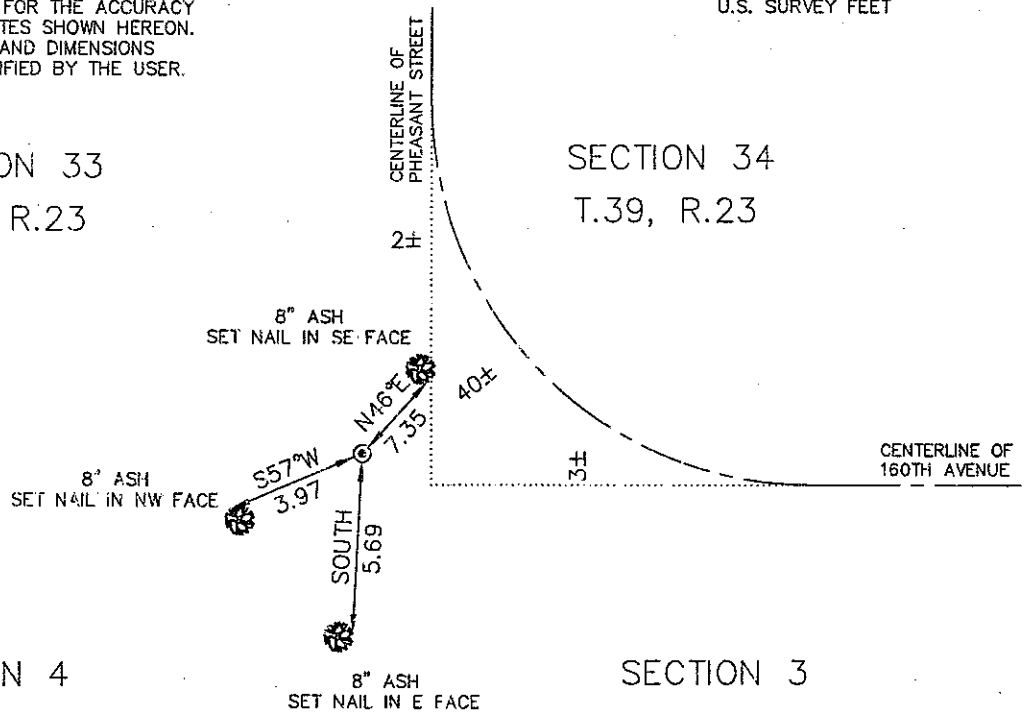
114/46

SECTION 33
T.39, R.23

SECTION 34
T.39, R.23

SECTION 4
T.38, R.23

SECTION 3
T.38, R.23



Kroschel Land Surveyors, Inc.

1639 Main Street North, Suite 6, Pine City, MN 55063
Phone: 320-629-3267 Fax: 320-629-0176

Statement of evidence relative to this corner location is on back of page.

I hereby certify that this survey, plan, or report was prepared by me or under my direct supervision, that the United States public land survey monument record is correct and complete to the best of my knowledge and belief, and that I am a duly Licensed Land Surveyor under the laws of the State of Minnesota.

Tyler J. Kroschel

1-24-2013
Date

License No. 44490

Land Surveyor

County Surveyor

OFFICE OF THE COUNTY RECORDER

County of Kanabec

I hereby certify that this document was filed in the County Recorder's office at _____ .M. on the _____ day of _____ A.D., 20_____

County Recorder _____

By _____, Deputy

DOCUMENT NO. _____

Statement of Evidence:

In September of 1849, Deputy Surveyor John Smith set a post to mark the Northeast Corner of Section 4, Township 38 North, Range 23 West, 4th Principal Meridian.

Reference ties were taken to:

- 10 inch Aspen at North 69 degrees West a distance of 13 links
- 9 inch Aspen at North 62 degrees East a distance of 26 links
- 10 inch Aspen at South 75 degrees West a distance of 17 links
- 11 inch Aspen at South 70 degrees East a distance of 18 links

All of the original Government corner evidence was searched for. None was found.

Surveyor Thomas Vickery records a map of the Township line along the north line of Section 3 & 4, T.38, R.23, per the records of the Kanabec County Highway Department. He does not state any distance nor anything found or set at the Northeast corner of Section 4. There is no date on this map.

1903—Comfort Township Road Order on record in the County Auditor's Office shows a survey by County Surveyor John Nelson along the West line of Section 34, T.39, R.23 for a township road. He gives a distance of 80.18 chains along the West line of Section 34. He does not state what type of monument he found or set.

1904—County Surveyor John Nelson made a survey along the West line of Section 34, T.39, R.23, per the records of the County Highway Department. He gives a distance of 80.18 chains along the West line of Section 34. He does not state what type of monument he found or set.

1925—County Surveyor George Jenks records Tie Sheet #65 for the Southwest corner of Section 34, T.39, R.23. He found an old post and set a stone marked +.

In October 2012, I made a survey around Section 34, Township 39 North, Range 23 West, 4th Principal Meridian for Christie Hershberger to locate existing monuments, lines of occupation and establish search areas.

On 10/18/2012, we made a 6' x 6' x 1' deep excavation with a front end loader at the centerline intersection. We found a 13" x 13" x 13" Hardstone with cross mark. We removed the Hardstone and set a 1/2" x 20" Iron Pipe with Aluminum Cap in its place. Established reference ties and assigned Kanabec County coordinates.

This location was determined to be the best available evidence of the original government corner.



Kroschel Land Surveyors, Inc.

1639 Main Street North, Suite 6, Pine City, MN 55063
Phone: 320-629-3267 Fax: 320-629-0176