

CERTIFICATE OF LOCATION OF GOVERNMENT CORNER

SW 31 39 - 23
 SOUTHEAST Corner of Section 36, Township 39, Range 24, 4TH P.M.

STATE OF MINNESOTA, County of KANABEC

At the corner location shown on the sketch:
 On 08/ /2004 Found a Kanabec County Monument.

Kanabec County U.S. Survey Feet Coordinates
 NAD 1983, HARN 1996 Adjustment
 Obtained by RTK GPS Observation

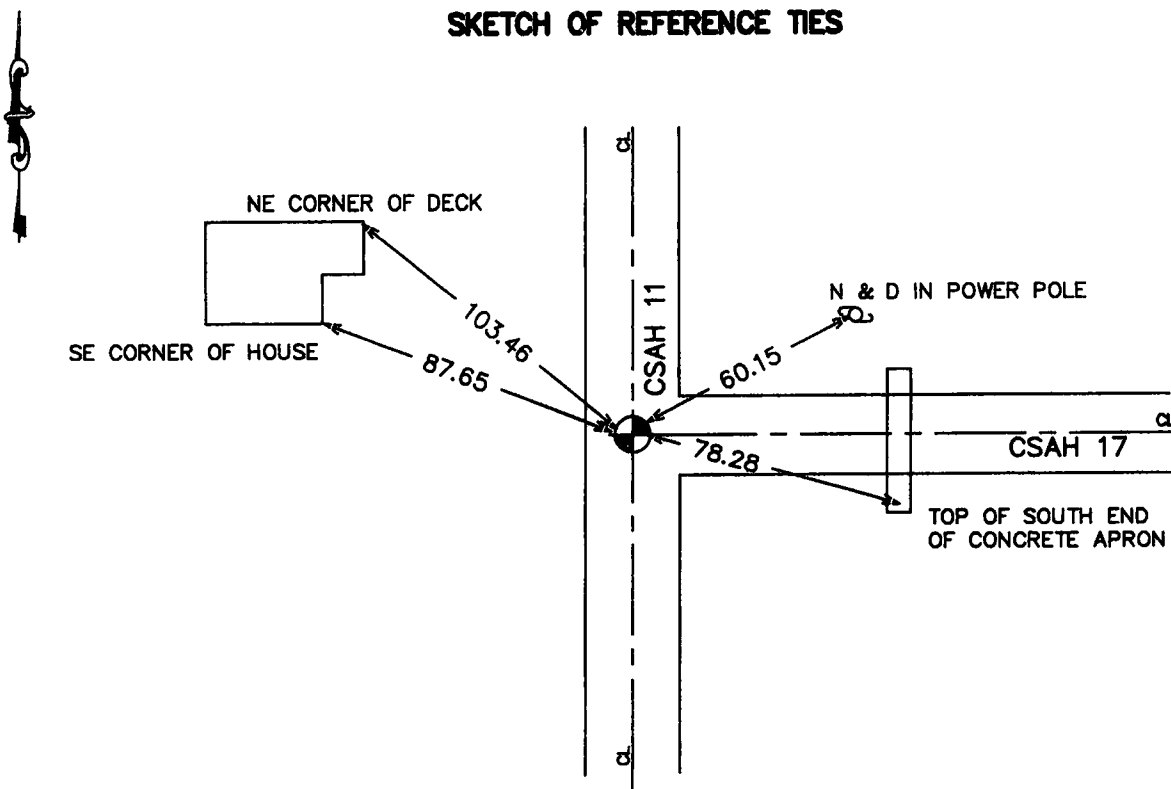
Northing= 132102.73

Easting= 406680.44

Note: NAD 1983, HARN 1996 Adjustment
 coordinates are NOT compatible with
 NAD 1983 coordinates

Note: 1 Meter=3937/1200 U.S. Survey Feet

SKETCH OF REFERENCE TIES



Statement of evidence relative to this corner location is on back of page.

I hereby certify that this document and the data
 contained herein was prepared by me or under
 my direct supervision.

Ernest Rud 9-08-2005
Signature Date

Registration No. Minn # 9808

Land Surveyor, [] Professional Engineer

[] County Surveyor, [] County Engineer

OFFICE OF THE COUNTY RECORDER

County of Kanabec

I hereby certify that this document was filed in
 the County Recorder's office at 8:00 A M. on the

21st day of Sept A.D., 2005

County Recorder Rhonda A Olson

BY _____ Deputy

DOCUMENT NO. _____

STATEMENT OF EVIDENCE

From 442A

Same original reference ties were intact.

The roadway was regraded in 1996. We located the section corner prior to construction and placed additional references outside of the new construction limits.

Before the roadway was paved in 1997, the corner was re-established according to references obtained previously. Additional references were also placed.

In August 2004, we ran a survey around Sections 6 and 7 and found this monument. We established Kanabec County coordinates on this monument and verified or established new ties to the corner.