

CERTIFICATE OF LOCATION OF GOVERNMENT CORNER

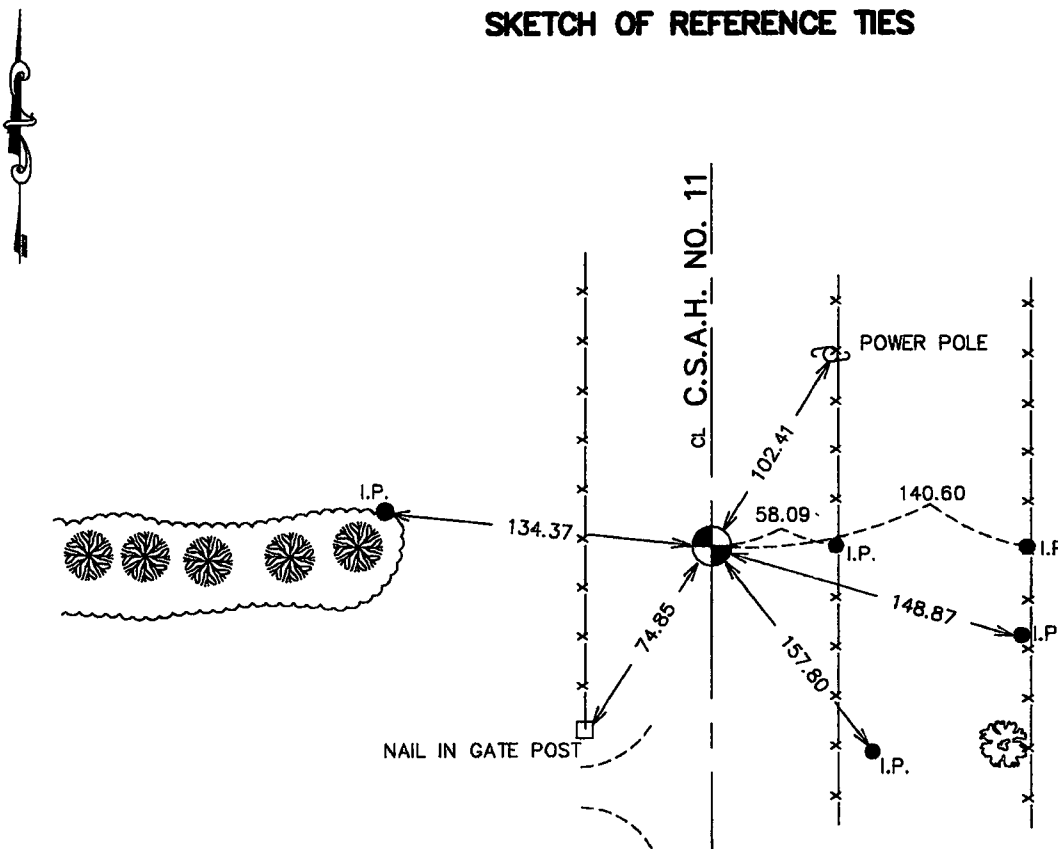
West
WEST QUARTER Corner of Section 31, Township 39, Range 23, 4TH P.M.

STATE OF MINNESOTA, County of KANABEC

At the corner location shown on the sketch:
 FOUND MONUMENT
 AND ESTABLISHED G.P.S. COORDINATES ON ITS LOCATION.

Kanabec County U.S. Survey Feet Coordinates
 NAD 1983, HARN 1996 Adjustment
 Obtained by RTK GPS Observation
 Northing= 134724.20
 Easting= 406682.81
 Note: NAD 1983, HARN 1996 Adjustment
 coordinates are NOT compatible with
 NAD 1983 coordinates
 Note: 1 Meter=3937/1200 U.S. Survey Feet

SKETCH OF REFERENCE TIES



Statement of evidence relative to this corner location is on back of page.

I hereby certify that this document and the data contained herein was prepared by me or under my direct supervision.

Ernest J. Rud 9-11-2006
 Signature Date

Registration No. Minn No 9808

Land Surveyor, Professional Engineer
 County Surveyor, County Engineer

OFFICE OF THE COUNTY RECORDER

County of Kanabec

I hereby certify that this document was filed in the County Recorder's office at 8:00 A M. on the

13th day of Sept A.D., 2006

County Recorder Rhonda Olson

BY _____ Deputy

DOCUMENT NO. _____

WEST QUARTER CORNER SECTION 18, T38, R25

STATEMENT OF EVIDENCE

ALL OF THE ORIGINAL BEARING TREES ARE GONE.

JOHN NELSON, COUNTY SURVEYOR, MADE A NEW BEARING TREE IN 1894. THIS IS NOW GONE.

ON AUGUST 26, 1976, M.B. RUDE MADE AN EXCAVATION 10 FEET WIDE EAST-WEST AND 20 FEET LONG, 4 FEET DEEP 2 FEET INTO THE NATURAL GROUND NORTH-SOUTH AT CENTER OF ROAD AND FENCE LINE WEST WITH COUNTY BACKHOE.

NO EVIDENCE WAS FOUND IN THE EXCAVATION. WE MADE A RE-SURVEY OF THE TOWNSHIP LINE FROM THE SOUTHEAST CORNER OF SECTION 36 TO THE NORTHEAST CORNER OF SECTION 13. WE CONCLUDED THAT THE BEST AVAILABLE EVIDENCE FOR THE LOCATION OF THE ORIGINAL CORNER IS THE CENTER OF NORTH-SOUTH ROAD AND FENCE LINE WEST. THIS LOCATION WAS MONUMENTED WITH A CAST IRON MONUMENT 1 FOOT BELOW THE SURFACE.

THIS LOCATION FITS WELL WITH OCCUPATION LINES AT SIXTEENTH CORNER ONE QUARTER MILE NORTH AND SOUTH OF CORNER.

THE ROADWAY WAS REGRADED IN 1996. KANABEC COUNTY HIGHWAY DEPARTMENT LOCATED THE QUARTER CORNER PRIOR TO CONSTRUCTION AND PLACED ADDITIONAL REFERENCES OUTSIDE OF THE NEW CONSTRUCTION LIMITS.

BEFORE THE ROADWAY WAS PAVED IN 1997, THE CORNER WAS RE-ESTABLISHED ACCORDING TO REFERENCES OBTAINED PREVIOUSLY. ADDITIONAL REFERENCES WERE ALSO PLACED.

IN JULY 2006 E.G. RUD FOUND THIS MONUMENT AND ESTABLISHED KANABEC COUNTY COORDINATES ON THIS POSITION USING G.P.S. EQUIPMENT.