

CERTIFICATE OF LOCATION OF GOVERNMENT CORNER

WEST QUARTER Corner of Section 30, Township 39, Range 23, 4TH P.M.

STATE OF MINNESOTA, County of KANABEC

At the corner location shown on the sketch:
On 05/29/2003 Found a 7/8" capped Rebar.

Kanabec County U.S. Survey Feet Coordinates
NAD 1983, HARN 1996 Adjustment
Obtained by RTK GPS Observation

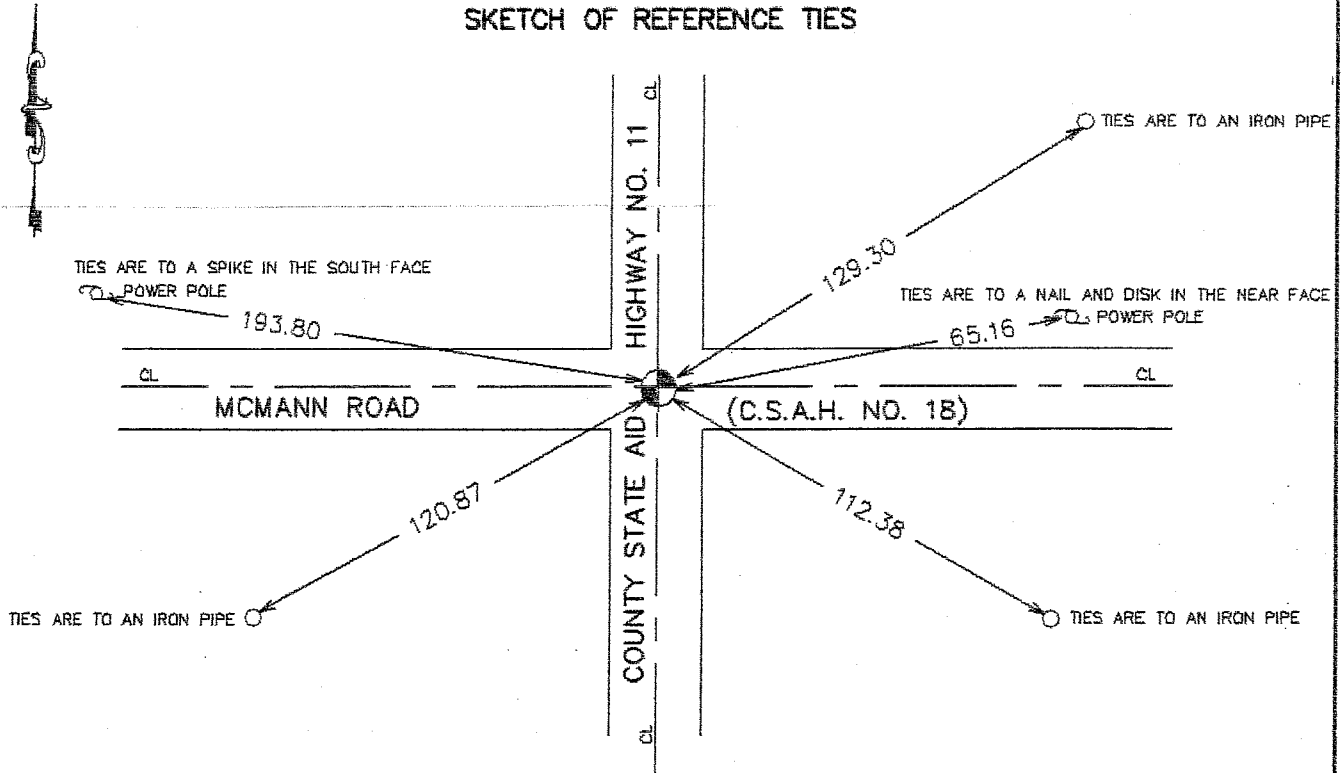
Northing= 140023.587

Easting= 406674.405

Note: NAD 1983, HARN 1996 Adjustment
coordinates are NOT compatible with
NAD 1983 coordinates

Note: 1 Meter=3937/1200 U.S. Survey Feet

SKETCH OF REFERENCE TIES



Statement of evidence relative to this corner location is on back of page.

I hereby certify that this document and the data contained herein was prepared by me or under my direct supervision.

Eneal J. Rud 7-08-2003
Signature Date

Registration No. 9808

- Land Surveyor, Professional Engineer
- County Surveyor, County Engineer

OFFICE OF THE COUNTY RECORDER

County of _____

I hereby certify that this document was filed in the County Recorder's office at _____ M. on the

_____ day of _____ A.D., 20__

County Recorder _____

BY _____ Deputy

DOCUMENT NO. _____

STATEMENT OF EVIDENCE

FROM TIE SHEET NO. 469-A.

All reference ties were intact.

The roadway regraded in 1996. We located the section corner prior to construction and placed additional reference outside of the new construction limits.

Before the roadway was paved in 1997, the corner was re-established according to reference obtained previously. Additional references were also placed.

May 2003

Found monument, verified field ties and established Kanabec County coordinates on monument.