

CERTIFICATE OF LOCATION OF GOVERNMENT CORNER

EAST QUARTER Corner of Section 12, Township 39, Range 24, 4TH P.M.
 STATE OF MINNESOTA, County of KANABEC

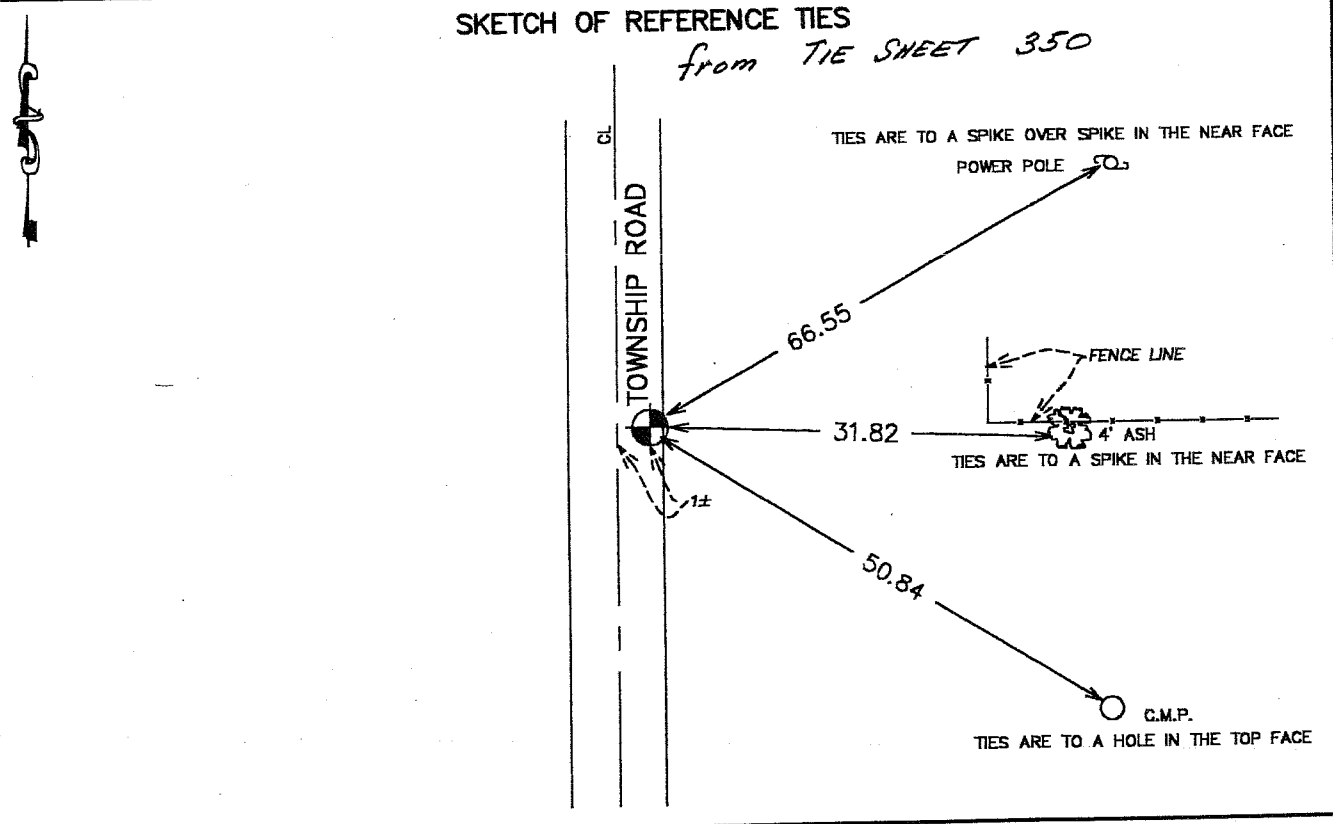
At the corner location shown on the sketch:
 On 10/23/2002 Found a KANABEC COUNTY MONUMENT,
 cast aluminum monument with magnets for corners.

Kanabec County U.S. Survey Feet Coordinates
 NAD 1983, HARN 1996 Adjustment
 Obtained by RTK GPS Observation

Northing= 155796.762
 Easting= 406751.833

Note: NAD 1983, HARN 1996 Adjustment
 coordinates are NOT compatible with
 NAD 1983 coordinates
 Note: 1 Meter=3937/1200 U.S. Survey Feet

SKETCH OF REFERENCE TIES from TIE SHEET 350



Statement of evidence relative to this corner location is on back of page.

I hereby certify that this document and the data
 contained herein was prepared by me or under
 my direct supervision.
Eric J. Rud 1-21-2003
Signature Date

Registration No. 9808

Land Surveyor, Professional Engineer
 County Surveyor, County Engineer

OFFICE OF THE COUNTY RECORDER
 County of _____
 I hereby certify that this document was filed in
 the County Recorder's office at _____ M. on the
 _____ day of _____ A.D., 20____
 County Recorder _____
 BY _____ Deputy
DOCUMENT NO. _____

STATEMENT OF EVIDENCE

SEE TIE SHEET NO. 350