

CERTIFICATE OF LOCATION OF GOVERNMENT CORNER

NORTH QUARTER Corner of Section 06, Township 39, Range 23, 4TH P.M.

STATE OF MINNESOTA, County of KANABEC

At the corner location shown on the sketch:
 IN OCTOBER 2005 SET 1/2" IRON PIPE
 AND ESTABLISHED G.P.S. COORDINTES ON THE LOCATION.

Kanabec County U.S. Survey Feet Coordinates
 NAD 1983, HARN 1996 Adjustment
 Obtained by RTK GPS Observation

Northing= 163834.27

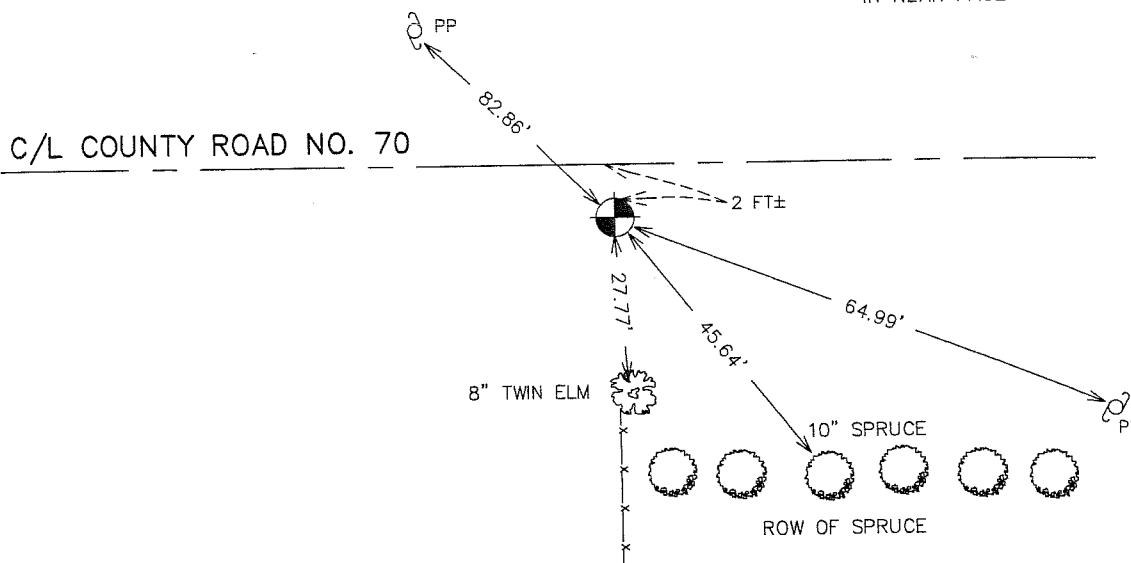
Easting= 409352.28

Note: NAD 1983, HARN 1996 Adjustment
 coordinates are NOT compatible with
 NAD 1983 coordinates

Note: 1 Meter=3937/1200 U.S. Survey Feet

SKETCH OF REFERENCE TIES FROM TIE SHEET 582

TIES ARE TO SPIKE IN BLAZE
 IN NEAR FACE



Statement of evidence relative to this corner location is on back of page.

I hereby certify that this document and the data
 contained herein was prepared by me or under
 my direct supervision.

Ernest J. Rud
 Signature

1-23-2006
 Date

Registration No. Minn No 9808

- Land Surveyor, Professional Engineer
 County Surveyor, County Engineer

OFFICE OF THE COUNTY RECORDER

County of _____

I hereby certify that this document was filed in
 the County Recorder's office at _____ M. on the

_____ day of _____ A.D., 20__

County Recorder _____

BY _____ Deputy

DOCUMENT NO. _____

STATEMENT OF EVIDENCE:

ALL OF THE ORIGINAL BEARING TREES ARE NOW GONE.

IN 1887, THOMAS R. VICKERY, A SURVEYOR, SET A 4" OAK POST TO MARK THIS CORNER BY SINGLE PROPORTIONAL MEASUREMENT.

IN JUNE 1981, M.B. RUDE RAN A SURVEY AROUND SECTION 6 AND LOCATED THE EXISTING MONUMENTS AND LINES OF OCCUPATION.

THIS CORNER IS IN AN EAST-WEST ROAD AND AN OLD FENCE LINE SOUTH.

AN EXCAVATION WAS MADE WITH THE COUNTY BACKHOE AT THIS CORNER. THE EXCAVATION WAS 15 FEET SQUARE, 3 FEET DEEP, 1 FOOT INTO NATURAL GROUND. NO EVIDENCE WAS FOUND IN THE EXCAVATION.

A 4" BY 17" CAST IRON MONUMENT WAS SET BY SINGLE PROPORTIONAL MEASUREMENT BETWEEN THE NORTHEAST AND THE NORTHWEST CORNERS OF SECTION 6. THIS LOCATION FITS THE ACCEPTED LINES OF OCCUPATION AT THE QUARTER CORNER AND ALSO AT THE SIXTEENTH CORNERS, A QUARTER MILE EAST AND WEST.

IN OCTOBER 2005 E.G. RUD FOUND THIS MONUMENT AND ESTABLISHED KANABEC COUNTY COORDINATES ON THIS POSITION USING G.P.S. EQUIPMENT.