

CERTIFICATE OF LOCATION OF GOVERNMENT CORNER

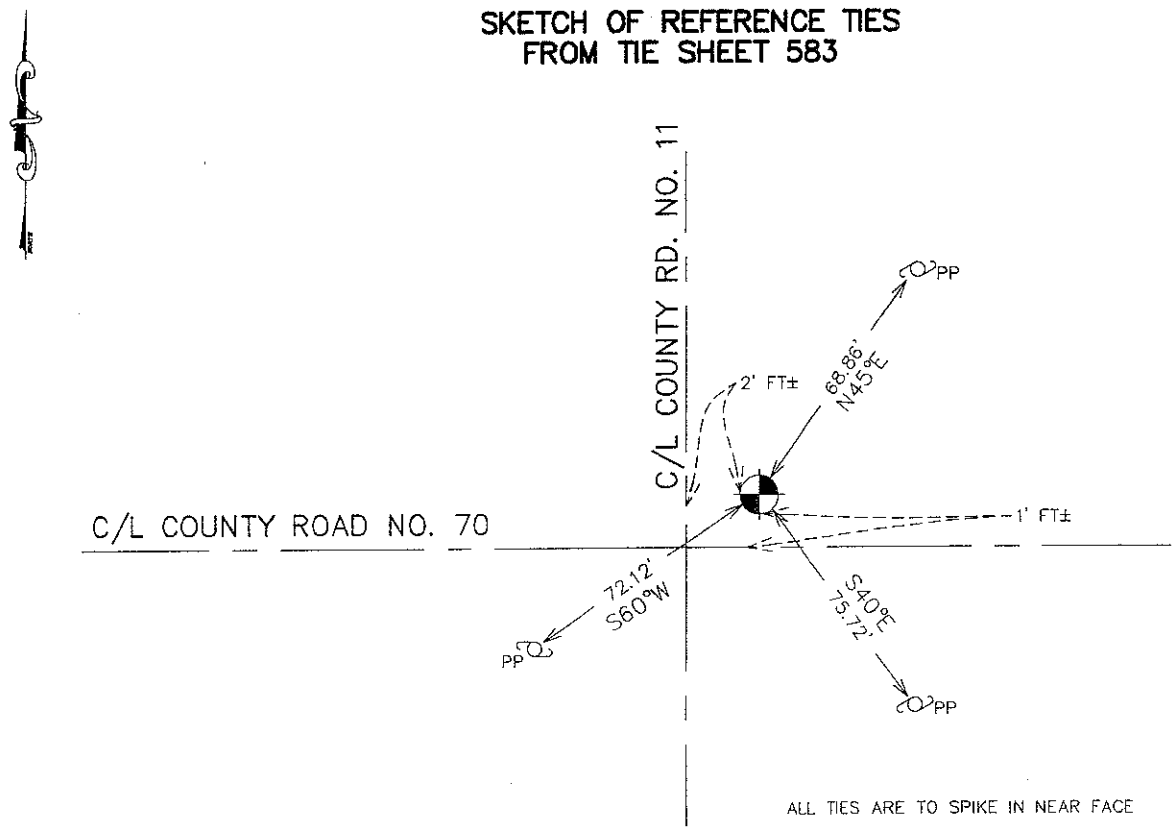
NORTHEAST
SOUTHEAST
Corner of Section 6 31, Township 39 40, Range 23 23, 4TH P.M.

STATE OF MINNESOTA, County of KANABEC

At the corner location shown on the sketch:
IN OCTOBER 2005 FOUND MONUMENT
AND ESTABLISHED G.P.S. COORDINTES ON THE LOCATION.

Kanabec County U.S. Survey Feet Coordinates
NAD 1983, HARN 1996 Adjustment
Obtained by RTK GPS Observation
Northing= 163842.239
Easting= 411980.246
Note: NAD 1983, HARN 1996 Adjustment
coordinates are NOT compatible with
NAD 1983 coordinates
Note: 1 Meter=3937/1200 U.S. Survey Feet

SKETCH OF REFERENCE TIES FROM TIE SHEET 583



ALL TIES ARE TO SPIKE IN NEAR FACE

Statement of evidence relative to this corner location is on back of page.

I hereby certify that this document and the data contained herein was prepared by me or under my direct supervision.

Ernest J. Rud 1-26-2010
Signature Date

Registration No. 9808

Land Surveyor, Professional Engineer
 County Surveyor, County Engineer

OFFICE OF THE COUNTY RECORDER

County of _____

I hereby certify that this document was filed in the County Recorder's office at _____ M. on the _____ day of _____ A.D., 20____

County Recorder _____

BY _____ Deputy

DOCUMENT NO. _____

SE CORNER, SEC. 31, T40, R23

STATEMENT OF EVIDENCE:

ALL OF THE ORIGINAL BEARING TREES ARE NOW GONE.

IN 1887, THOMAS R. VICKERY SET A 4" OAK POST AT THIS CORNER.

ON JUNE 19, 1981, AN EXCAVATION WAS MADE WITH THE COUNTY BACKHOE AND AT 5 FEET BELOW THE SURFACE M.B. RUDE FOUND A SANDSTONE WITH A + CUT IN THE TOP AT THIS CORNER.

A 4" BY 17" CAST IRON MONUMENT WAS SET OVER THE SANDSTONE TO MARK THIS CORNER.

IN OCTOBER 2005 E.G. RUD FOUND THIS MONUMENT AND ESTABLISHED KANABEC COUNTY COORDINATES ON THIS POSITION USING G.P.S. EQUIPMENT.

IN NOVEMBER 2009, AFTER COUNTY RD 11 WAS RECONSTRUCTED THIS MONUMENT WAS VERIFIED AND NEW TIES WERE TAKEN.