

# CERTIFICATE OF LOCATION OF GOVERNMENT CORNER

NORTH QUARTER Corner of Section 05, Township 39, Range 23, 4TH P.M.

STATE OF MINNESOTA, County of KANABEC

At the corner location shown on the sketch:  
IN OCTOBER 2005 SET THIS MONUMENT  
AND ESTABLISHED G.P.S. COORDINATES ON ITS LOCATION.

Kanabec County U.S. Survey Feet Coordinates  
NAD 1983, HARN 1996 Adjustment  
Obtained by RTK GPS Observation

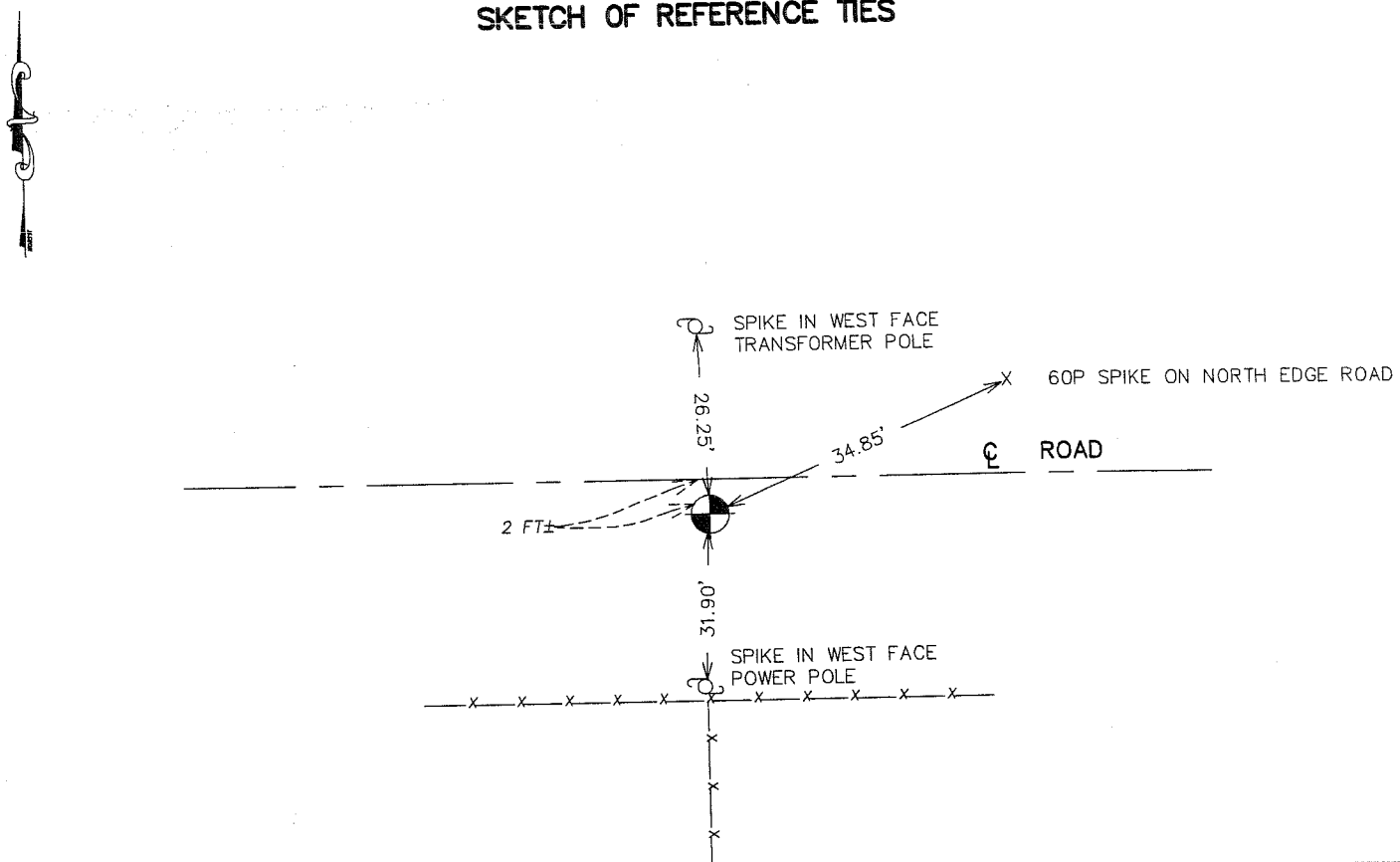
Northing= 163834.70

Easting= 414608.46

Note: NAD 1983, HARN 1996 Adjustment  
coordinates are NOT compatible with  
NAD 1983 coordinates

Note: 1 Meter=3937/1200 U.S. Survey Feet

## SKETCH OF REFERENCE TIES



Statement of evidence relative to this corner location is on back of page.

I hereby certify that this document and the data contained herein was prepared by me or under my direct supervision.

Ernest J. Paul Signature 1-23-2006 Date

Registration No. Minn No 9808

Land Surveyor,  Professional Engineer

County Surveyor,  County Engineer

## OFFICE OF THE COUNTY RECORDER

County of \_\_\_\_\_

I hereby certify that this document was filed in the County Recorder's office at \_\_\_\_\_ M. on the \_\_\_\_\_ day of \_\_\_\_\_ A.D., 20\_\_\_\_

County Recorder \_\_\_\_\_

BY \_\_\_\_\_ Deputy

DOCUMENT NO. \_\_\_\_\_

## STATEMENT OF EVIDENCE

THE ORIGINAL CORNER WAS SET BY GOVERNMENT SURVEYOR SILAS BARNARD IN SEPTEMBER 1855. NO EVIDENCE FOR THE CORNER OR BEARING TREES REMAIN. ON JUNE 7TH 1902, JOHN NELSON, MADE A SURVEY OF SECTION 5 AND AT THIS CORNER TOOK TIES. THE NOTES DO NOT INDICATE WHAT TYPE OF MONUMENT. THE TIES TAKEN NO LONGER REMAIN.

IN OCTOBER 2005 E.G. RUD RAN A SURVEY OF SECTION 5 TO LOCATE EXISTING MONUMENTATION AND TIE IN LINES OF OCCUPATION.

ON OCTOBER 4, 2005 KANABC COUNTY HIGHWAY DEPARTMENT MADE AN EXCAVATION ON THE CENTERLINE OF A GRAVEL ROAD AND A FENCE LINE GOING SOUTH.

THIS EXCAVATION WAS 7' BY 10' BY 1' INTO NATURAL GROUND. NO EVIDENCE WAS FOUND IN THE EXCAVATION.

SEVERAL STONES WERE FOUND BUT NO MARKINGS COULD BE DETECTED ON ANY OF THEM.

E.G. RUD SET THIS CORNER ON LINE AND AT A PROPORTIONATE DISTANCE BETWEEN THE NORTHEAST AND NORTHWEST CORNERS OF SECTION 5. THIS FELL 2 FEET ~~BETWEEN~~ SOUTH OF CENTERLINE AND ON THE NORTHERLY EXTENSION OF THE FENCE RUNNING SOUTH, KANABEC COUNTY COORDINATES WERE ESTABLISHED USING G.P.S EQUIPMENT.