

CERTIFICATE OF LOCATION OF GOVERNMENT CORNER

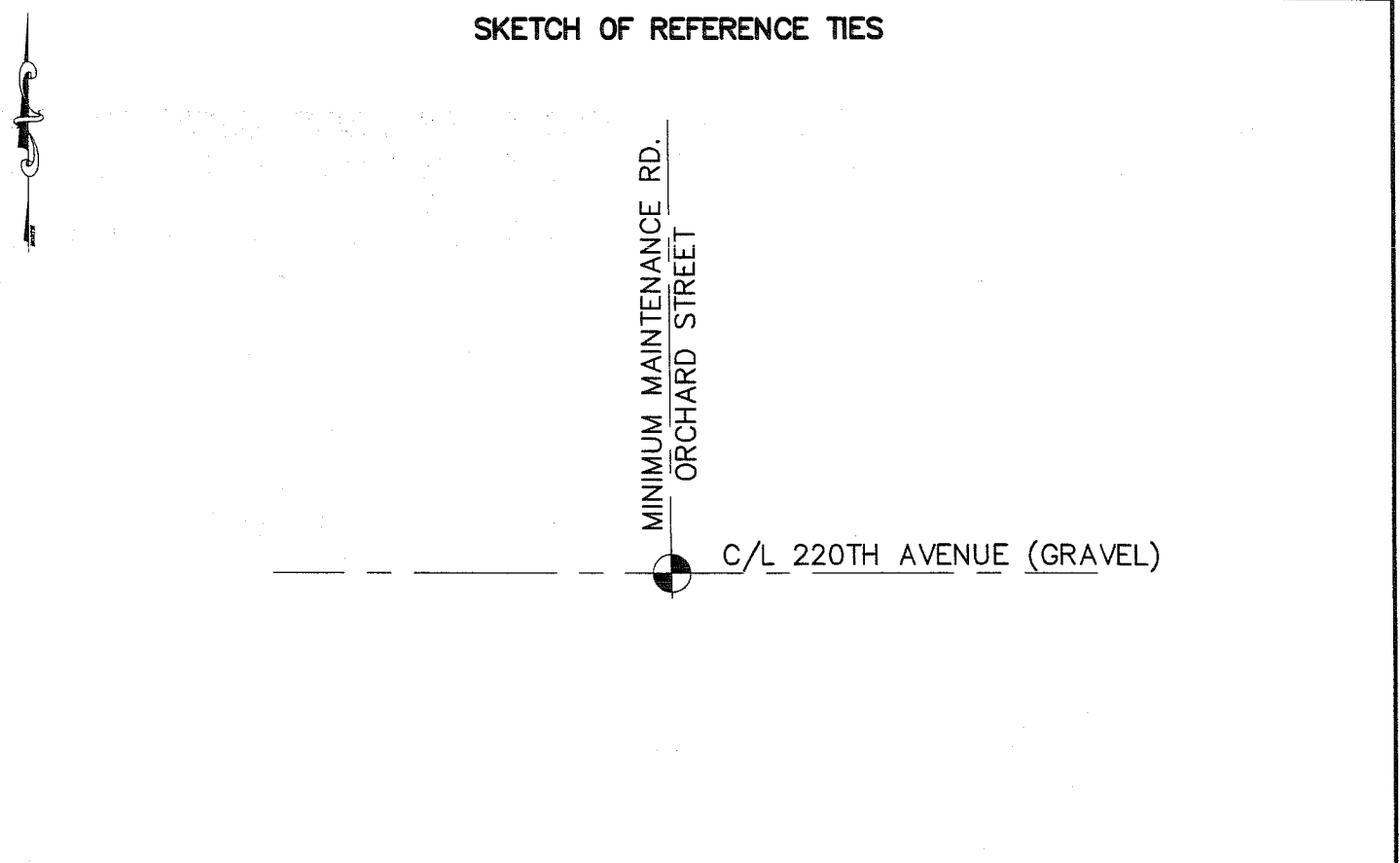
NORTH QUARTER Corner of Section 04, Township 39, Range 23, 4TH P.M.
SOUTH QUARTER Corner of Section 33, Township 40, Range 23, 4TH P.M.

STATE OF MINNESOTA, County of KANABEC

At the corner location shown on the sketch:
1/2" PIPE SET AND ESTABLISHED
G.P.S. COORDINATES ON THE LOCATION

Kanabec County U.S. Survey Feet Coordinates
NAD 1983, HARN 1996 Adjustment
Obtained by RTK GPS Observation
Northing= 163831.65
Easting= 419878.85
Note: NAD 1983, HARN 1996 Adjustment
coordinates are NOT compatible with
NAD 1983 coordinates
Note: 1 Meter=3937/1200 U.S. Survey Feet

SKETCH OF REFERENCE TIES



Statement of evidence relative to this corner location is on back of page.

I hereby certify that this document and the data contained herein was prepared by me or under my direct supervision.

Ernest L. Reed 1-23-2006
Signature Date

Registration No. Minn No 9808

- Land Surveyor, Professional Engineer
 County Surveyor, County Engineer

OFFICE OF THE COUNTY RECORDER

County of _____

I hereby certify that this document was filed in the County Recorder's office at _____ M. on the _____ day of _____ A.D., 20____

County Recorder _____
BY _____ Deputy

DOCUMENT NO. _____

STATEMENT OF EVIDENCE

THE ORIGINAL CORNER WAS SET AND TIES TAKEN BY GOVERNMENT SURVEYOR SILAS BARNARD IN AUGUST 1855. THERE IS NO REMAINING EVIDENCE FOR THIS CORNER OR BEARING TREES. NO SUBSEQUENT SURVEY RECORDS FOR THIS CORNER COULD BE FOUND.

IN OCTOBER 2005 E.G. RUD RAN A SURVEY AROUND SECTION 33 TO LOCATE EXISTING MONUMENTATION AND LINES OF OCCUPATION.

ON OCTOBER 6, 2005 THE KANABEC COUNTY HIGHWAY DEPARTMENT MADE AN EXCAVATION AT THE CENTERLINE OF AN EAST-WEST GRAVEL ROAD AND THE CENTERLINE OF A MINIMUM MAINTENANCE ROAD GOING TO THE NORTH.

THE EXCAVATION WE MADE WAS APPROXIMATELY 8 FEET BY 12 FEET BY 1.5 FEET INTO NATURAL GROUND. NO EVIDENCE WAS IN THE EXCAVATION.

THE CENTERLINE INTERSECTION OF THE TWO ROADS WAS ACCEPTED AS THE BEST EVIDENCE FOR THE PERPETUATION OF THIS CORNER. A HALF INCH PIPE WAS SET AND KANABEC COUNTY COORDINATES ESTABLISHED USING G.P.S. EQUIPMENT.