

# CERTIFICATE OF LOCATION OF GOVERNMENT CORNER

NORTHEAST Corner of Section 4, Township 39, Range 23, 4TH P.M.

STATE OF MINNESOTA, County of KANABEC

At the corner location shown on the sketch:  
On 10/ /2003 Found a Kanabec County Monument.

Kanabec County U.S. Survey Feet Coordinates  
NAD 1983, HARN 1996 Adjustment  
Obtained by RTK GPS Observation

Northing= 163837.804

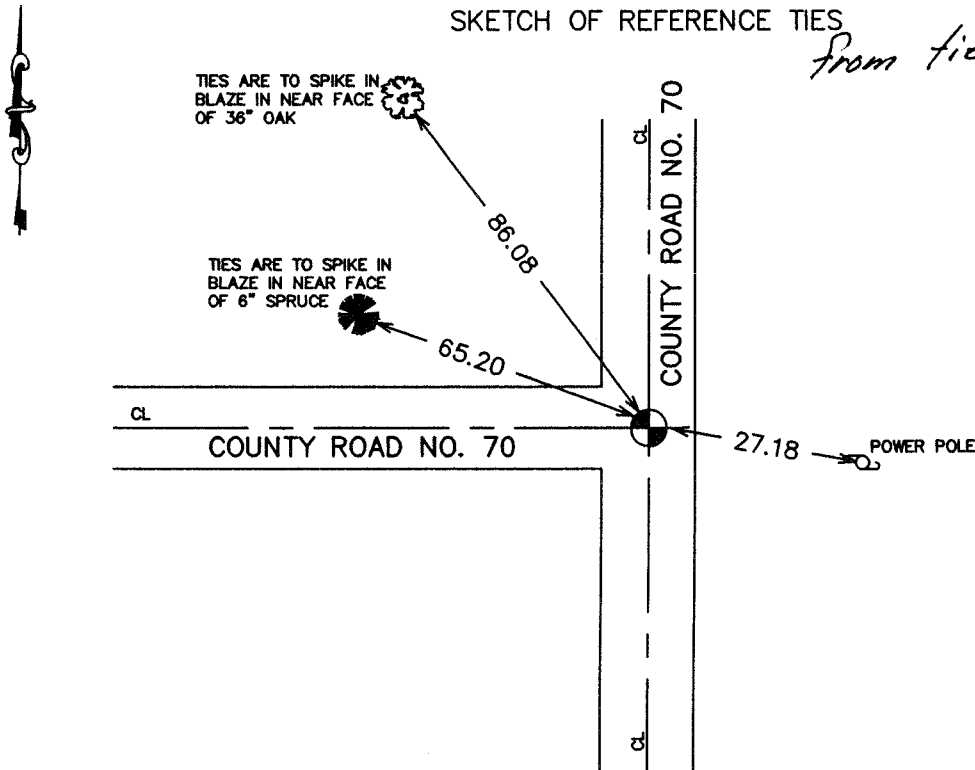
Easting= 422520.667

Note: NAD 1983, HARN 1996 Adjustment  
coordinates are NOT compatible with  
NAD 1983 coordinates

Note: 1 Meter=3937/1200 U.S. Survey Feet

SKETCH OF REFERENCE TIES

*from tie sheet 827*



Statement of evidence relative to this corner location is on back of page.

I hereby certify that this document and the data contained herein was prepared by me or under my direct supervision.

*Ernest Rud*  
Signature

*5-19-2004*  
Date

Registration No. *9808*

Land Surveyor,  Professional Engineer

County Surveyor,  County Engineer

## OFFICE OF THE COUNTY RECORDER

County of \_\_\_\_\_

I hereby certify that this document was filed in the County Recorder's office at \_\_\_\_\_ M. on the

\_\_\_\_\_ day of \_\_\_\_\_ A.D., 20\_\_

County Recorder \_\_\_\_\_

BY \_\_\_\_\_ Deputy

DOCUMENT NO. \_\_\_\_\_

STATEMENT OF EVIDENCE  
(FROM TIE SHEET 827) (1990)

All of the original government bearing trees are now gone.

In 19 , John Nelson, a former County Surveyor, made a survey along the south line of Section 34, Township 40, Range 23, and set a sandstone marked with a "+" at the southwest corner of Section 34, Township 40, Range 23.

On June 26, 1990, we made a survey around Section 34, Township 40, Range 23, to locate existing monuments, lines of occupation and to search areas.

On July 9, 1990, we made a 4 foot by 15 foot by 15 foot excavation with a backhoe, and found a 2 foot well point set at the center line of the intersection of roads north, south and west, 3 feet below the road surface.

We accepted the well point as the perpetuated location of the original government location.

(2003)

In October of 2003, we made a survey around Section 3 and Section 4, and found the monument and established Kanabec County coordinates on this position.