

# CERTIFICATE OF LOCATION OF GOVERNMENT CORNER

NORTH QUARTER Corner of Section 3, Township 39, Range 23, 4TH P.M.  
 STATE OF MINNESOTA, County of KANABEC

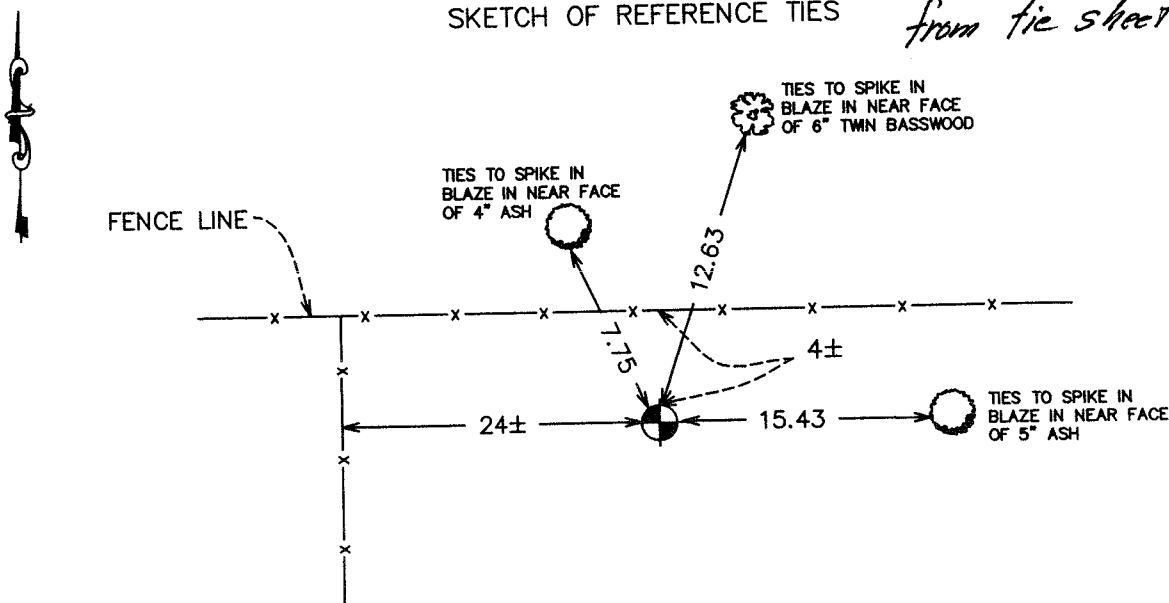
At the corner location shown on the sketch:  
 On 10/ /2003 Found a Kanabec County Monument.

Kanabec County U.S. Survey Feet Coordinates  
 NAD 1983, HARN 1996 Adjustment  
 Obtained by RTK GPS Observation

Northing= 163845.080  
 Easting= 425141.359

Note: NAD 1983, HARN 1996 Adjustment  
 coordinates are NOT compatible with  
 NAD 1983 coordinates  
 Note: 1 Meter=3937/1200 U.S. Survey Feet

SKETCH OF REFERENCE TIES *from tie sheet 834*



Statement of evidence relative to this corner location is on back of page.

I hereby certify that this document and the data  
 contained herein was prepared by me or under  
 my direct supervision.

*Ernest Gud* 5-19-2004  
Signature Date

Registration No. 9808

Land Surveyor,     Professional Engineer  
 County Surveyor,     County Engineer

## OFFICE OF THE COUNTY RECORDER

County of \_\_\_\_\_

I hereby certify that this document was filed in  
 the County Recorder's office at \_\_\_\_\_ M. on the  
 \_\_\_\_\_ day of \_\_\_\_\_ A.D., 20\_\_\_\_

County Recorder \_\_\_\_\_

BY \_\_\_\_\_ Deputy

DOCUMENT NO. \_\_\_\_\_

STATEMENT OF EVIDENCE  
(FROM TIE SHEET 834) (1990)

All of the original government bearing trees are now gone.

In 1910, the former County Surveyor, John Nelson, made a survey along the south line of Section 34, Township 40, Range 23, and set a sandstone marked with a "+", at the south quarter corner of Section 34, Township 40, Range 23.

On June 26, 1990, we made a survey around Section 34, Township 40, Range 23, to locate existing monuments, lines of occupation and search areas.

On June 29, 1990, we made a search by probing and excavating with a backhoe as much as possible and found nothing.

John Nelson set this corner by single proportional measurement between southeast and southwest corners of Section 34 in 1911.

We reset this corner by single proportional measurement between the southeast and southwest corners of section 34.

(2003)

In October of 2003, we did a survey around Section 2 and Section 3 and found this monument. We established Kanabec County coordinates on the corner using G.P.S. equipment.