

CERTIFICATE OF LOCATION OF GOVERNMENT CORNER

NORTHEAST Corner of Section 3, Township 39, Range 23, 4TH P.M.
STATE OF MINNESOTA, County of KANABEC

At the corner location shown on the sketch:
On 10/ /2003 Found a Kanabec County Monument.

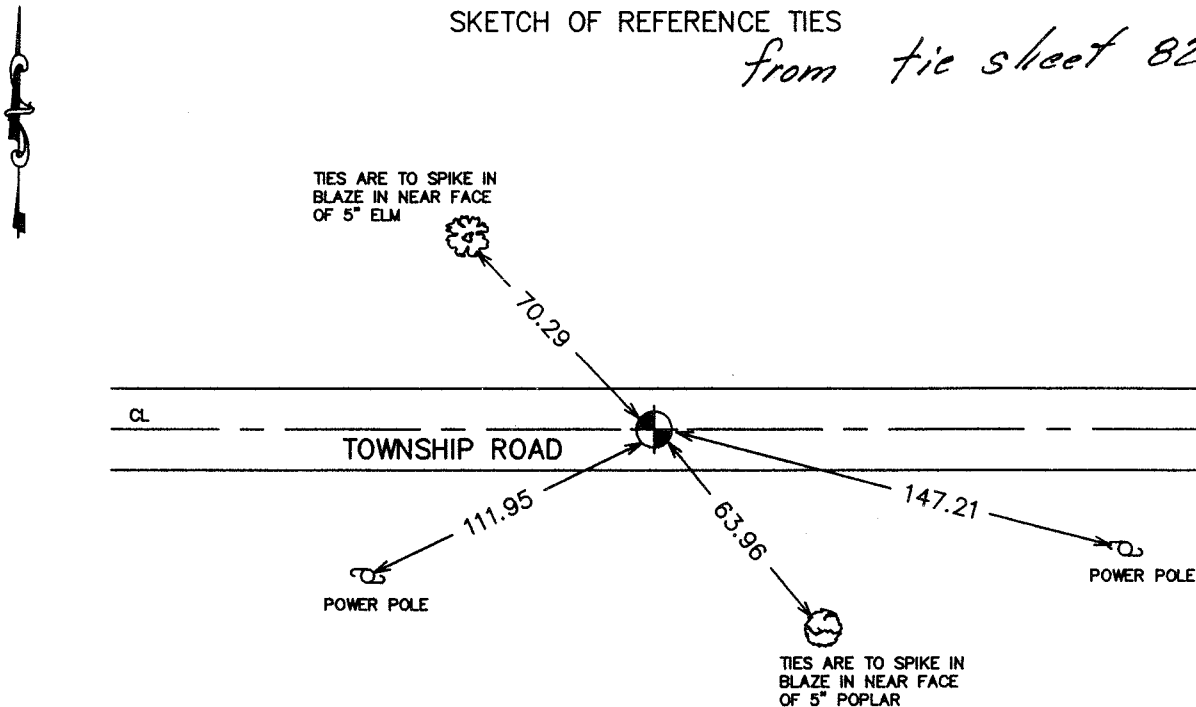
Kanabec County U.S. Survey Feet Coordinates
NAD 1983, HARN 1996 Adjustment
Obtained by RTK GPS Observation

Northing= 163852.755
Easting= 427761.329

Note: NAD 1983, HARN 1996 Adjustment
coordinates are NOT compatible with
NAD 1983 coordinates
Note: 1 Meter=3937/1200 U.S. Survey Feet

SKETCH OF REFERENCE TIES

from tie sheet 828



Statement of evidence relative to this corner location is on back of page.

I hereby certify that this document and the data contained herein was prepared by me or under my direct supervision.

Ernest Reed
Signature

5-19-2004
Date

Registration No. 9808

Land Surveyor, [] Professional Engineer

[] County Surveyor, [] County Engineer

OFFICE OF THE COUNTY RECORDER

County of _____

I hereby certify that this document was filed in the County Recorder's office at _____ M. on the _____ day of _____ A.D., 20____

County Recorder _____

BY _____ Deputy

DOCUMENT NO. _____

STATEMENT OF EVIDENCE
(FROM TIE SHEET 828) (1990)

All of the original government bearing trees are now gone.

In 19 , John Nelson, a former County Surveyor, made a survey along the south line of Section 34, Township 40, Range 23, and set a sandstone marked with a "+" at the southeast corner of Section 34, Township 40, Range 23.

On June 28, 1990, we made a survey around Section 34, Township 40, Range 23, to locate the existing monuments, lines of occupation and to establish search areas.

On June 29, 1990, we made an excavation with a backhoe, and found a sandstone marked with a "+" and replaced it with a 7/8" by 24" capped rebar.

(2003)

In October of 2003, we did a survey around Section 2 and Section 3. We found the #7 rebar and established Kanabec County coordinates on this position.