

CERTIFICATE OF LOCATION OF GOVERNMENT CORNER

NORTH QUARTER Corner of Section 2, Township 39, Range 23, 4TH P.M.

STATE OF MINNESOTA, County of KANABEC

At the corner location shown on the sketch:

FOUND THIS MONUMENT
AND ESTABLISHED G.P.S. COORDINATES ON ITS LOCATION.

Kanabec County U.S. Survey Feet Coordinates
NAD 1983, HARN 1996 Adjustment
Obtained by RTK GPS Observation

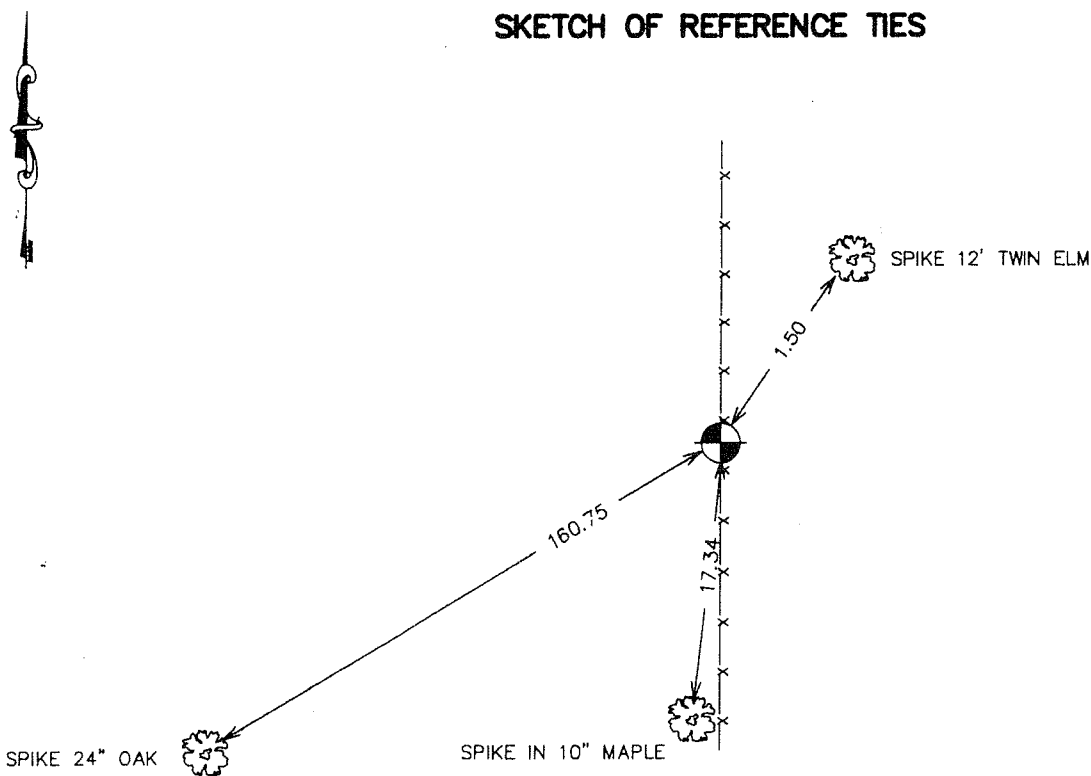
Northing= 163862.21

Easting= 430389.245

Note: NAD 1983, HARN 1996 Adjustment
coordinates are NOT compatible with
NAD 1983 coordinates

Note: 1 Meter=3937/1200 U.S. Survey Feet

SKETCH OF REFERENCE TIES



Statement of evidence relative to this corner location is on back of page.

I hereby certify that this document and the data contained herein was prepared by me or under my direct supervision.

Ernest G. Rud
Signature

9-28-2006
Date

Registration No. Minn No 9808

Land Surveyor, Professional Engineer

County Surveyor, County Engineer

OFFICE OF THE COUNTY RECORDER

County of _____

I hereby certify that this document was filed in the County Recorder's office at _____ M. on the

_____ day of _____ A.D., 20__

County Recorder _____

BY _____ Deputy

DOCUMENT NO. _____

NORTH QUARTER CORNER SECTION 02, T39, R23

STATEMENT OF EVIDENCE

ALL GOVERNMENT TIES ARE GONE
BURR OAK 23" S83°W 26 LINKS
IRONWOOD 8" S72°E 26 LINKS

RESURVEY INFORMATION

THERE IS NO RESURVEY INFORMATION AVAILABLE IN THE COUNTY RECORD BOOKS.

ON AUGUST 15 1986, TERRY JOHNSON FOUND A 1/2" REBAR ON A FENCE LINE WHICH RUNS NORTH-SOUTH. THIS REBAR FITS THE PLATS OF BLAKE'S PINES AND JOHNSON AND BLAKE'S SOUTH LAKEVIEW ADDITION. I ACCEPTED THE RE-BAR AS THE BEST EVIDENCE OF THE LOCATION OF THE ORIGINAL CORNER.

IN AUGUST 2006 E.G. RUD AND SONS FOUND THIS MONUMENT AND ESTABLISHED KANABEC COUNTY COORDINATES ON THIS POSITION USING G.P.S. EQUIPMENT.