

CERTIFICATE OF LOCATION OF GOVERNMENT CORNER

North Quarter Corner of Section 1, Township 39 North, Range 23 West,
4th Principal Meridian, Kanabec County, State of Minnesota

At the corner location shown on the sketch:
On 10/03/2016 set a 7/8" x 36" Rebar with Aluminum Cap.

Kanabec County U.S. Survey Feet Coordinates
NAD 1983, HARN 1996 Adjustment
Obtained by RTK GPS observation
Northing: 163834.3952
Easting: 435653.2932

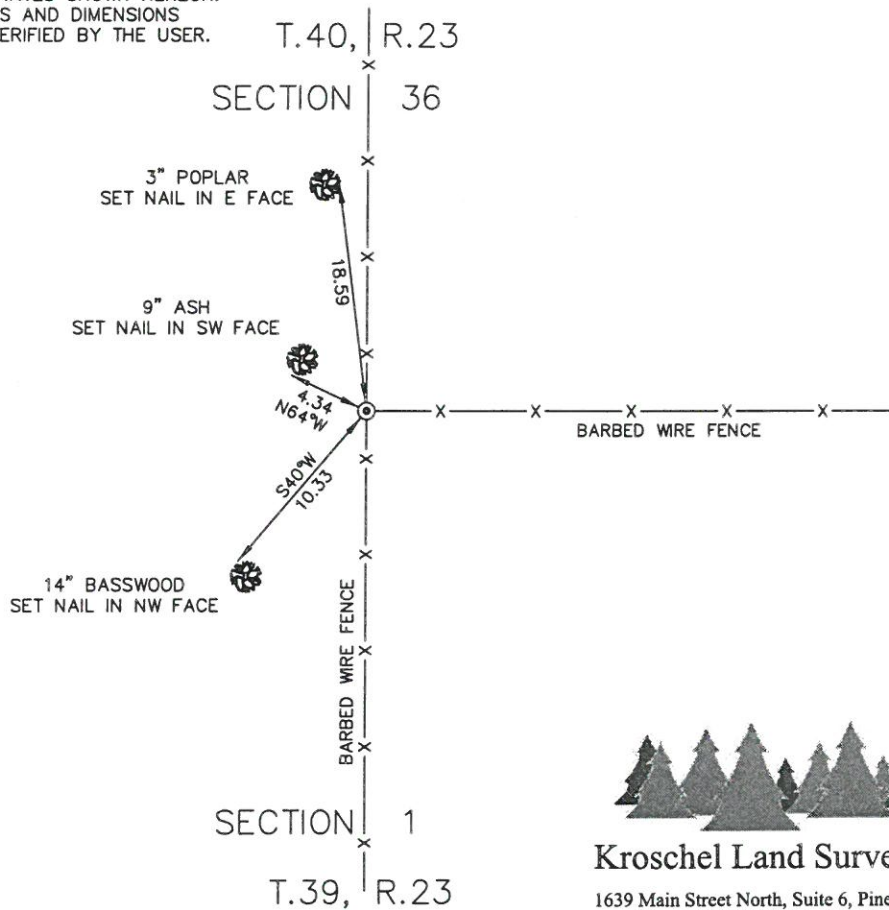
Note: NAD 1983, HARN 1996 Adjustment
coordinates are NOT compatible with
NAD 1983 coordinates
Note: 1 Meter = 3937/1200 U.S. Survey Feet

SKETCH OF REFERENCE TIES

KROSCHEL LAND SURVEYORS, INC.
ASSUMES NO LIABILITY FOR THE ACCURACY
OF THE GPS COORDINATES SHOWN HEREON.
ALL COORDINATES AND DIMENSIONS
SHOULD BE FIELD VERIFIED BY THE USER.

NOT TO SCALE

THE BASIS OF BEARINGS FOR THIS
DRAWING IS THE KANABEC COUNTY
COORDINATE SYSTEM BY MNDOT,
NAD 1983, HARN 1996 ADJUSTMENT




Kroschel Land Surveyors, Inc.

1639 Main Street North, Suite 6, Pine City, MN 55063
Phone: 320-629-3267 Fax: 320-629-0176

Statement of evidence relative to this corner location is on back of page.

I hereby certify that this survey, plan, or report was prepared by me or under my direct supervision, that the United States public land survey monument record is correct and complete to the best of my knowledge and belief, and that I am a duly Licensed Land Surveyor under the laws of the State of Minnesota.


Tyler J. Kroschel
License No. 44490
 Land Surveyor County Surveyor

Date 11-9-2016

OFFICE OF THE COUNTY RECORDER

County of Kanabec

I hereby certify that this document was filed in the County Recorder's office at _____ .M. on the _____ day of _____ A.D., 20____

County Recorder _____
By _____, Deputy

DOCUMENT NO. _____

Statement of Evidence:

In July of 1849, Deputy Surveyor John M. Smith set a post to mark the North Quarter Corner of Section 1, Township 39 North, Range 23 West, 4th Principal Meridian.

Reference ties were taken to:

- 14 inch Lind at South 85 degrees West a distance of 36 links
- 11 inch Sugar at North 50 degrees East a distance of 38 links

All of the original Government corner evidence was searched for. None was found.

1903- County Surveyor John Nelson made a survey around Section 1, T.39, R.23. He found the Government Post at the Northwest corner of Section 1 and Government bearing trees at the Northeast corner of Section 1. He set the North Quarter post at a lost position. He measured 79.71 chains across the north line of Section 1.

In October 2016, I made a survey around Section 36, Township 40 North, Range 23 West, 4th Principal Meridian for Bruce Phillops and James Hintz to locate existing monuments, lines of occupation and establish search areas.

On 10/03/2016, a search was made by checking with a magnetic locator. The corner falls at an old fence corner running north, south, and east. James Hintz, longtime resident, stated that a fence used to go west as well, but that he had removed that portion. The fence corner fit a lost position within 5 feet east/west and 1.5 feet north/south. I set a 7/8" x 36" Rebar with Aluminum Cap at the fence corner. Established reference ties and assigned Kanabec County coordinates.

This location was determined to be the best available evidence of the original corner location.

I measure 2628.17 feet to the Northeast corner of Section 1(Nelson: 2630.43 feet).

I measure 2638.47 feet to the Northwest corner of Section 1(Nelson: 2630.43 feet).



Kroschel Land Surveyors, Inc.

1639 Main Street North, Suite 6, Pine City, MN 55063
Phone: 320-629-3267 Fax: 320-629-0176