

CERTIFICATE OF LOCATION OF GOVERNMENT CORNER

NORTHEAST Corner of Section 1, Township 39, Range 23, 4TH P.M.

STATE OF MINNESOTA, County of KANABEC

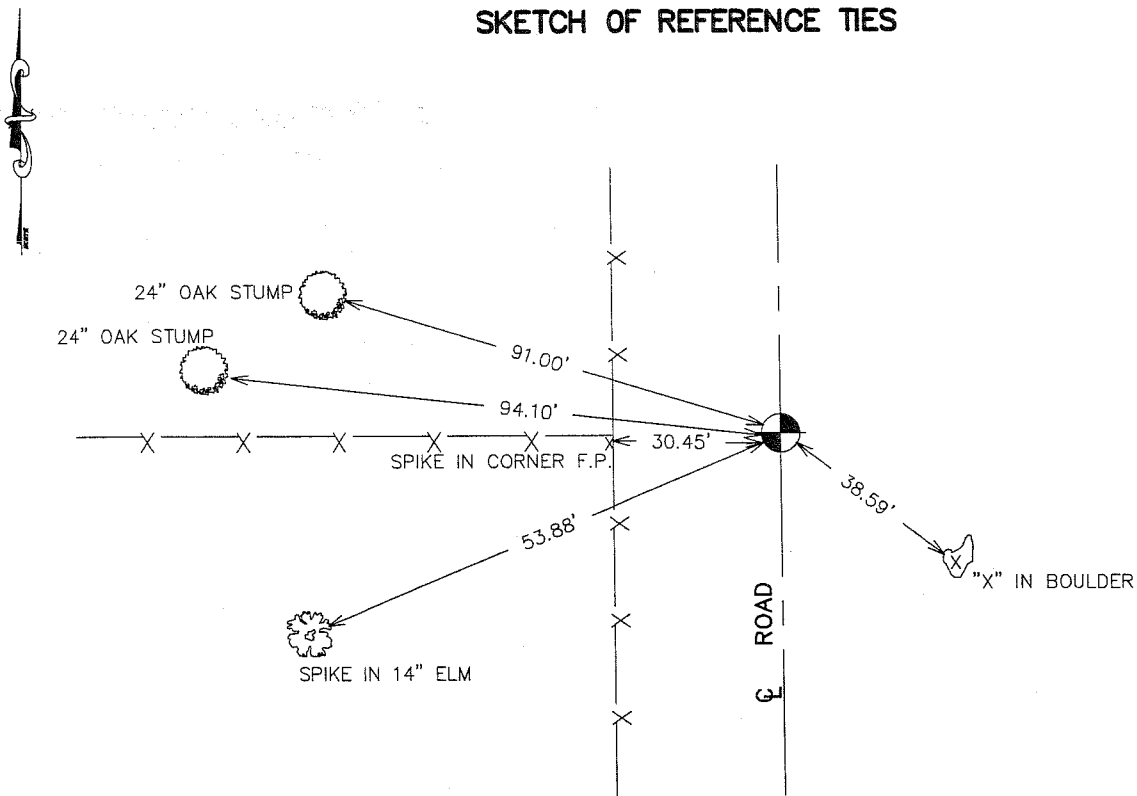
At the corner location shown on the sketch:
 IN MARCH 2005 FOUND THIS MONUMENT
 AND ESTABLISHED G.P.S. COORDINATES ON ITS LOCATION.

Kanabec County U.S. Survey Feet Coordinates
 NAD 1983, HARN 1996 Adjustment
 Obtained by RTK GPS Observation

Northing= 163841.74
 Easting= 438281.59

Note: NAD 1983, HARN 1996 Adjustment
 coordinates are NOT compatible with
 NAD 1983 coordinates
 Note: 1 Meter=3937/1200 U.S. Survey Feet

SKETCH OF REFERENCE TIES



Statement of evidence relative to this corner location is on back of page.

I hereby certify that this document and the data contained herein was prepared by me or under my direct supervision.

Ernst Alud
 Signature

1-23-2006
 Date

Registration No. Minn No 9808

- Land Surveyor, Professional Engineer
 County Surveyor, County Engineer

OFFICE OF THE COUNTY RECORDER

County of _____

I hereby certify that this document was filed in the County Recorder's office at _____ M. on the _____ day of _____ A.D., 20____

County Recorder _____

BY _____ Deputy

DOCUMENT NO. _____

STATEMENT OF EVIDENCE

ALL OF THE ORIGINAL BEARING TREES ARE NOW GONE.

M.B. RUDE MADE AN EXCAVATION TO FIND THE STONE SET BY HANDSHU. THE EXCAVATION WAS MADE DUE EAST OF A FENCE CORNER IN THE CENTERLINE OF ROAD GOING NORTH-SOUTH. WE DUG A 6' BY 6' BY 3' HOLE AND FOUND NOTHING. AREA SURROUNDING EXCAVATION WAS IN A CUT SO STONE WAS PROBABLY REMOVED. WE FOUND TWO 24" OAK STUMPS THAT FIT DIRECTION AND DISTANCE. WE PULLED THE TIES AND IT FIT BOTH CENTERLINE OF THE ROAD AND FENCE LINE GOING WEST. FERN HINTZ, LONG TIME AREA RESIDENT SAID FENCE IS AID ESTABLISHED TOWNSHIP BOUNDARY.

IN MARCH 2005 E.G. RUD AND SONS FOUND THIS MONUMENT AND ESTABLISHED KANABEC COUNTY COORDINATES ON THIS POSITION USING G.P.S. EQUIPMENT.