

CERTIFICATE OF LOCATION OF GOVERNMENT CORNER

EAST QUARTER Corner of Section 1, Township 39, Range 23, 4TH P.M.
 STATE OF MINNESOTA, County of KANABEC

At the corner location shown on the sketch:

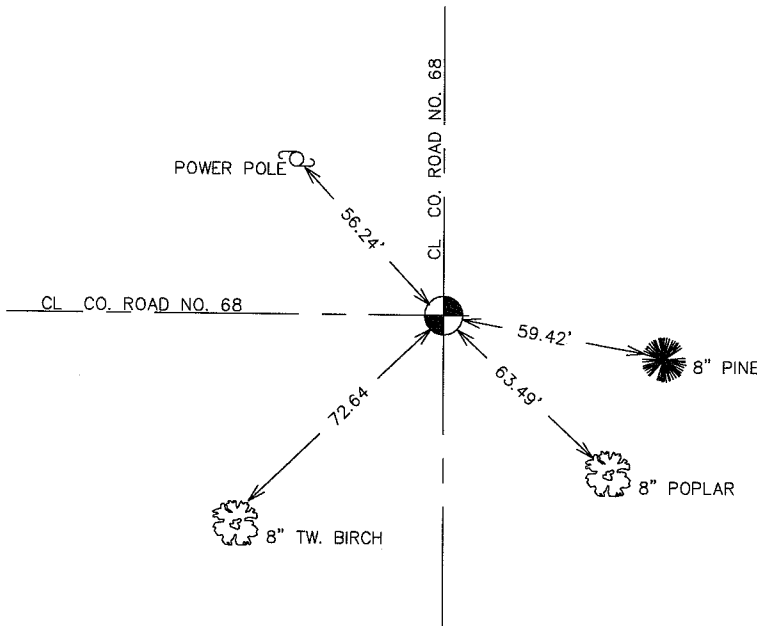
Kanabec County U.S. Survey Feet Coordinates
 NAD 1983, HARN 1996 Adjustment
 Obtained by RTK GPS Observation

Northing= 160998.10
 Easting= 438280.06

Note: NAD 1983, HARN 1996 Adjustment
 coordinates are NOT compatible with
 NAD 1983 coordinates
 Note: 1 Meter=3937/1200 U.S. Survey Feet

IN MARCH 2005 FOUND MONUMENT
 AND ESTABLISHED GPS COORDINATES.

SKETCH OF REFERENCE TIES



Statement of evidence relative to this corner location is on back of page.

I hereby certify that this document and the data contained herein was prepared by me or under my direct supervision.

Ernest Alud
 Signature

11-15-2005
 Date

Registration No. MINN No 9808

- Land Surveyor, Professional Engineer
 County Surveyor, County Engineer

OFFICE OF THE COUNTY RECORDER

County of _____

I hereby certify that this document was filed in the County Recorder's office at _____ M. on the _____ day of _____ A.D., 20____

County Recorder _____

BY _____ Deputy

DOCUMENT NO. _____

STATEMENT OF EVIDENCE

ALL OF THE ORIGINAL BEARING TREES ARE NOW GONE.

JOHN NELSON'S FORMER KANABEC COUNTY SURVEYORS RECORDS SHOW THAT HE RAN THE WEST LINE OF SECTION 6 IN 1903, BUT DOES NOT SHOW IF ANYTHING WAS SET AT THIS CORNER.

IN MARCH, 1981, M.B. RUDE RAN A SURVEY AROUND SECTION 6 AND LOCATED THE EXISTING MONUMENTS ~~ON~~ LINES OF OCCUPATION.

THIS CORNER IS AT THE INTERSECTION OF ROADS NORTH, SOUTH ~~AND~~ WEST.

ON JUNE 1, 1981, M.B. RUDE MADE AN EXCAVATION WITH THE BACKHOE AT THE INTERSECTION OF ROADS. AT 1 1/2 FEET DOWN HE FOUND A 1" IRON PIPE, 1/2 FOOT INTO THE NATURAL SOIL.

THE 1" IRON PIPE WAS ACCEPTED AS THE POINT SET BY JOHN NELSON IN 1903. M.B. RUDE SET A 4" BY 17" CAST IRON MONUMENT TO REPLACE THE 1" IRON PIPE.

IN MARCH 2005 E.G. RUD AND SONS FOUND THIS MONUMENT AND ESTABLISHED KANABEC COUNTY COORDINATES ON THIS POSITION USING G.P.S. EQUIPMENT.