

CERTIFICATE OF LOCATION OF GOVERNMENT CORNER

SOUTHEAST Corner of Section 1, Township 39, Range 23, 4TH P.M.

STATE OF MINNESOTA, County of KANABEC

At the corner location shown on the sketch:

Kanabec County U.S. Survey Feet Coordinates
 NAD 1983, HARN 1996 Adjustment
 Obtained by RTK GPS Observation

Northing= 158375.35

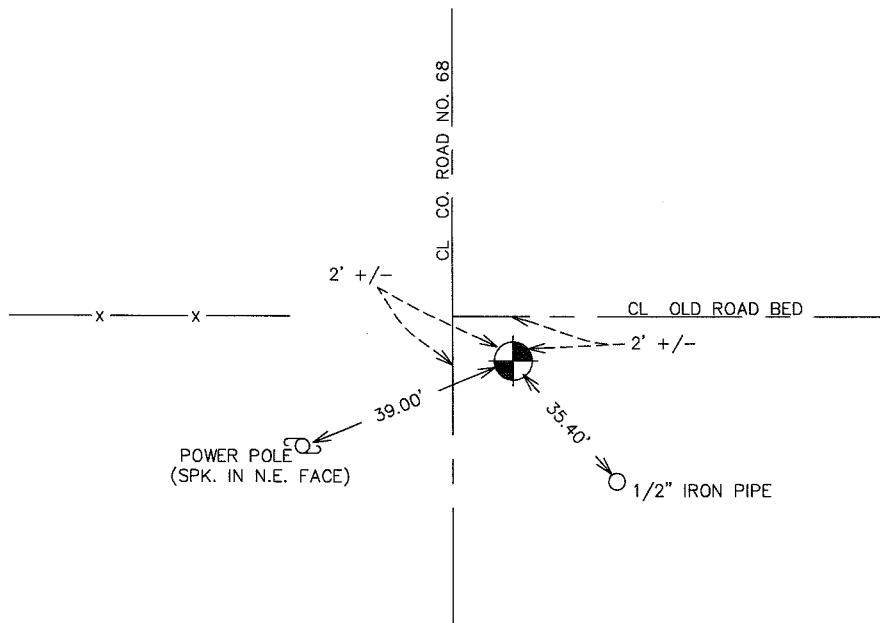
Easting= 438277.44

Note: NAD 1983, HARN 1996 Adjustment
 coordinates are NOT compatible with
 NAD 1983 coordinates

Note: 1 Meter=3937/1200 U.S. Survey Feet

IN MARCH 2005 FOUND CAST IRON MONUMENT
 AND ESTABLISHED GPS COORDINATES.

SKETCH OF REFERENCE TIES



Statement of evidence relative to this corner location is on back of page.

I hereby certify that this document and the data contained herein was prepared by me or under my direct supervision.

Ernest J. Hlub
 Signature

11-15-2005
 Date

Registration No. Minn No 9808

- Land Surveyor, Professional Engineer
- County Surveyor, County Engineer

OFFICE OF THE COUNTY RECORDER

County of _____

I hereby certify that this document was filed in the County Recorder's office at _____ M. on the

_____ day of _____ A.D., 20__

County Recorder _____

BY _____ Deputy

DOCUMENT NO. _____

STATEMENT OF EVIDENCE

ALL OF THE ORIGINAL BEARING TREES ARE NOW GONE.

JOHN NELSON'S FORMER KANABEC COUNTY SURVEYORS RECORDS SHOW THAT HE RAN THIS LINE IN 1903, BUT DOES NOT SHOW THAT TYPE OF MONUMENT WAS FOUND OR SET.

JAMES BUCKLEY'S PINE COUNTY SURVEYORS RECORDS SHOW A STONE AT THIS CORNER DATED IN 1927.

IN MARCH, 1981, M.B. RUDE RAN A SURVEY AROUND SECTION 6 AND LOCATED THE EXISTING MONUMENTS ON LINES OF OCCUPATION.

WE FOUND AN 1" IRON PIPE AT THE INTERSECTION OF ROADS NORTH, SOUTH AND EAST AND THE FENCE LINE WEST.

ON JUNE 1, 1981, M.B. RUDE OFFSET THE IRON PIPE AND EXCAVATED WITH THE BACKHOE. THE EXCAVATION WAS 15 FEET SQUARE, 3 FEET DEEP.

WE FOUND A BROKEN SANDSTONE AT 1 FOOT DOWN IN THE SAME HORIZONTAL POSITION AND FOUND REMAINS OF A WOODEN POST 1.5 FEET DOWN IN THE SAME HORIZONTAL POSITION.

THE IRON PIPE LOCATION WAS ACCEPTED AS THE PERPETUATION OF THE ORIGINAL CORNER AND A 4" BY 17" CAST IRON MONUMENT WAS SET TO MARK THIS CORNER.

IN MARCH 2005 E.G. RUD AND SONS FOUND THIS MONUMENT AND ESTABLISHED KANABEC COUNTY COORDINATES ON THIS POSITION USING G.P.S. EQUIPMENT.