

CERTIFICATE OF LOCATION OF GOVERNMENT CORNER

EAST 1/4 Corner of Section 13, Township 39, Range 23, 4TH P.M.

STATE OF MINNESOTA, County of KANABEC

At the corner location shown on the sketch:
IN MARCH 2005 FOUND THIS MONUMENT
AND ESTABLISHED G.P.S. COORDINATES ON ITS LOCATION.

Kanabec County U.S. Survey Feet Coordinates
NAD 1983, HARN 1996 Adjustment
Obtained by RTK GPS Observation

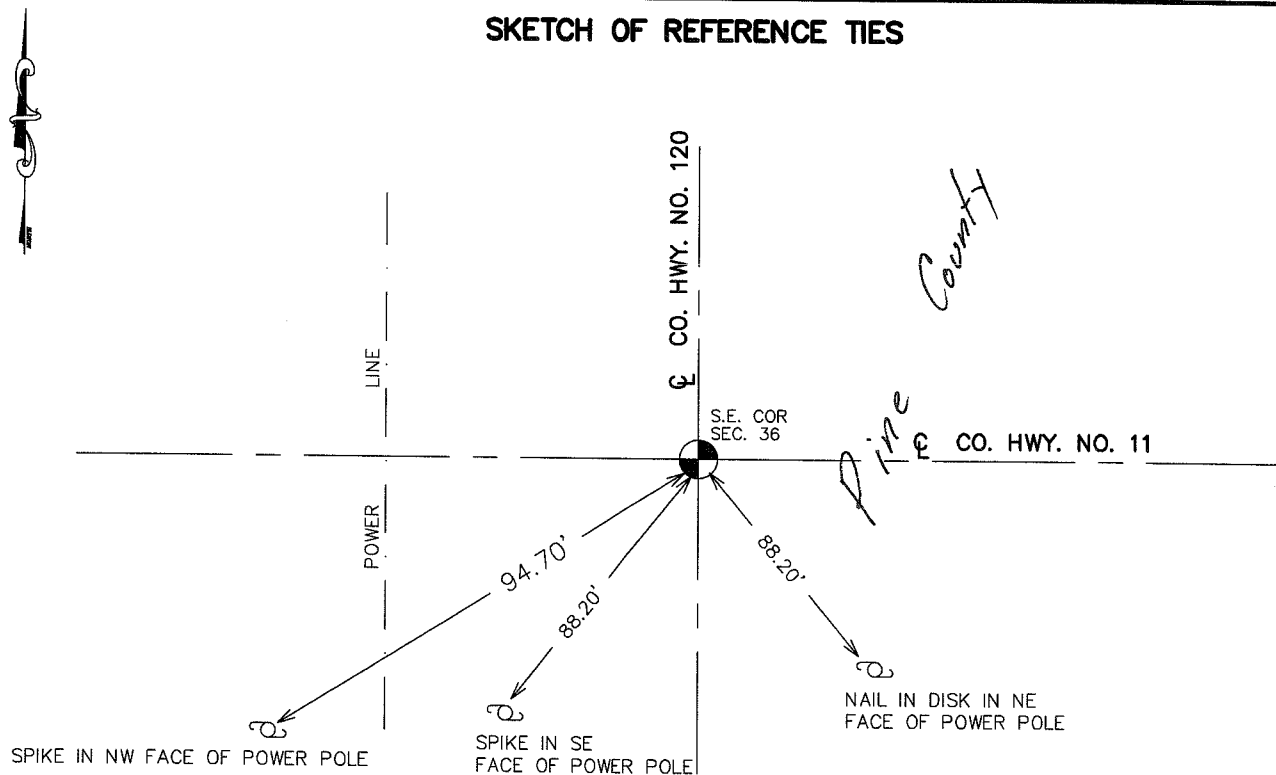
Northing= 150457.29

Easting= 438280.17

Note: NAD 1983, HARN 1996 Adjustment
coordinates are NOT compatible with
NAD 1983 coordinates

Note: 1 Meter=3937/1200 U.S. Survey Feet

SKETCH OF REFERENCE TIES



Statement of evidence relative to this corner location is on back of page.

I hereby certify that this document and the data contained herein was prepared by me or under my direct supervision.

Ernest G. Rud
Signature

11-18-2005
Date

OFFICE OF THE COUNTY RECORDER

County of _____

I hereby certify that this document was filed in the County Recorder's office at _____ M. on the _____ day of _____ A.D., 20____

County Recorder _____

BY _____ Deputy

DOCUMENT NO. _____

Registration No. Minn No 9808

Land Surveyor, Professional Engineer

County Surveyor, County Engineer

STATEMENT OF EVIDENCE

ALL OF THE ORIGINAL BEARING TREES ARE NOW GONE.

IN 1927, THE FORMER COUNTY SURVEYOR, JAMES BUCKLEY, SET A STONE. IN 1971, M.B. RUDE FOUND A SPIKE AND REPLACED IT WITH A 1/2" IRON PIPE AND IN 1976, IT WAS REPLACED WITH A CAST IRON MONUMENT.

IN JULY OF 1987, M.B. RUDE MADE A SURVEY ALONG THE EAST-WEST QUARTER LINE OF SECTION 13, TOWNSHIP 39, RANGE 23, TO LOCATE EXISTING MONUMENTS, LINES OF OCCUPATION AND TO SEARCH AREAS.

M.B. RUDE MADE A 15 FOOT BY 15 FOOT BY 5 FOOT DEEP EXCAVATION WITH THE BACK HOE, BUT DID NOT FIND THE STONE.

ON JULY 28, 1987, M.B. RUDE SET A 7/8" BY 24" CAPPED REBAR IN PLACE OF THE PREVIOUS CAST IRON MONUMENT AND ACCEPTED IT AS THE PERPETUATED CORNER LOCATION.

IN MARCH 2005 E.G. RUD AND SONS FOUND THIS MONUMENT AND ESTABLISHED KANABEC COUNTY COORDINATES ON THIS POSITION USING G.P.S. EQUIPMENT.