

CERTIFICATE OF LOCATION OF GOVERNMENT CORNER

NORTHEAST Corner of Section 25, Township 39, Range 23, 4TH P.M.
 STATE OF MINNESOTA, County of KANABEC

At the corner location shown on the sketch:
 IN MARCH 2005 FOUND MONUMENT
 AND ESTABLISHED G.P.S. COORDINTES ON THE LOCATION

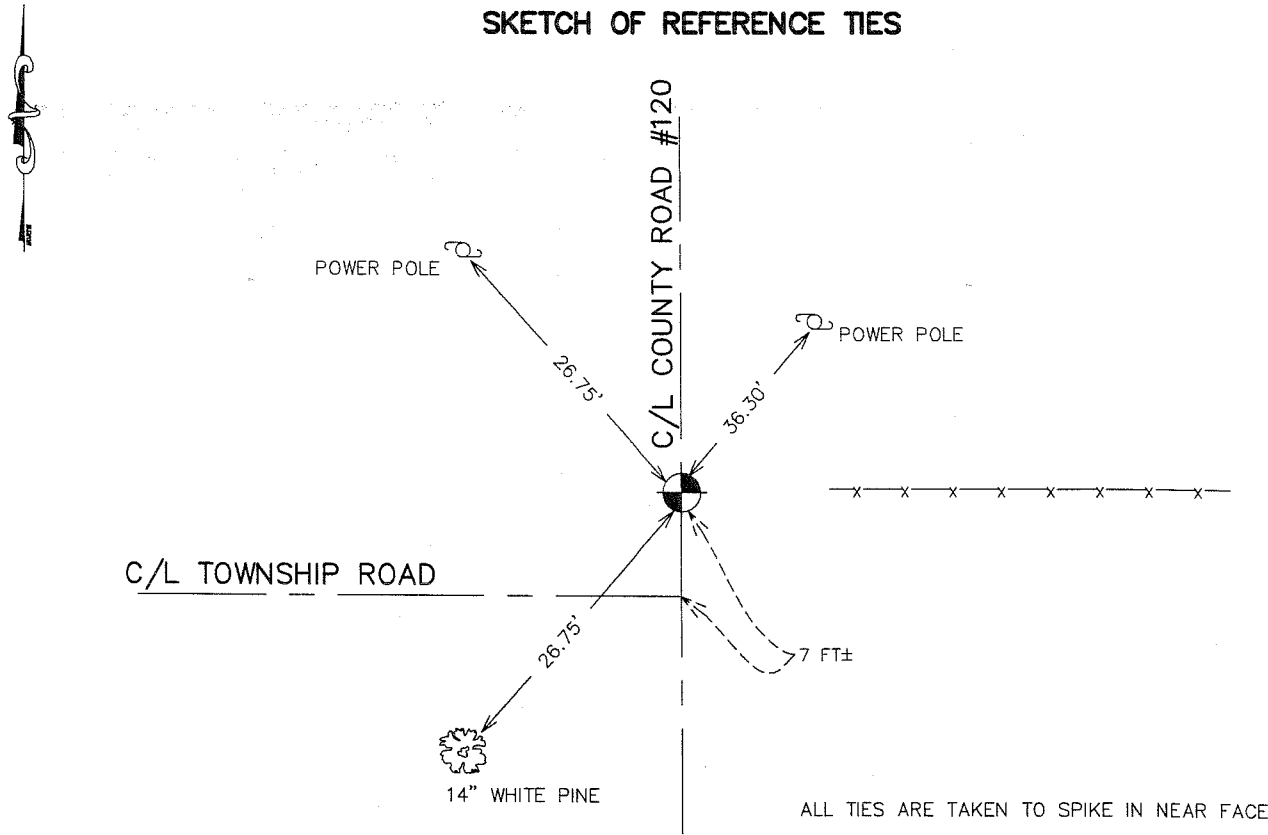
Kanabec County U.S. Survey Feet Coordinates
 NAD 1983, HARN 1996 Adjustment
 Obtained by RTK GPS Observation

Northing= 142556.85
 Easting= 438262.42

Note: NAD 1983, HARN 1996 Adjustment
 coordinates are NOT compatible with
 NAD 1983 coordinates

Note: 1 Meter=3937/1200 U.S. Survey Feet

SKETCH OF REFERENCE TIES



ALL TIES ARE TAKEN TO SPIKE IN NEAR FACE

Statement of evidence relative to this corner location is on back of page.

I hereby certify that this document and the data contained herein was prepared by me or under my direct supervision.

Ernest G. Rud 1-23-2006
Signature Date

Registration No. Minn No 9808

Land Surveyor, Professional Engineer
 County Surveyor, County Engineer

OFFICE OF THE COUNTY RECORDER

County of _____

I hereby certify that this document was filed in the County Recorder's office at _____ M. on the _____ day of _____ A.D., 20____

County Recorder _____

BY _____ Deputy

DOCUMENT NO. _____

STATEMENT OF EVIDENCE:

ALL OF THE ORIGINAL BEARING TREES ARE NOW GONE.

JOHN NELSON, THE KANABEC COUNTY SURVEYOR'S RECORDS SHOW HE USED THIS CORNER IN 1903, BUT DOES NOT SHOW WHAT WAS FOUND OR SET.

IN APRIL OF 1981, M.B. RUDE RAN A SURVEY AROUND SECTION 30 AND LOCATED THE LINES OF OCCUPATION AND THE EXISTING MONUMENTS. ALSO THE OLD PINE COUNTY RECORDS SHOW A ROD FOR THIS CORNER.

THIS CORNER IS IN THE INTERSECTION OF ROADS NORTH, SOUTH AND WEST AND A FENCE LINE EAST.

ON MAY 5, 1981, M.B. RUDE MADE AN EXCAVATION WITH THE BACKHOE AT THIS LOCATION. THE EXCAVATION WAS 15 FEET SQUARE AND 3 FEET DEEP.

AT 1 FOOT BELOW THE SURFACE M.B. RUDE FOUND A 3" POINTED POST AND A 1" IRON PIN.

THE 1" IRON PIN WAS ACCEPTED AS THE BEST AVAILABLE EVIDENCE OF THE ORIGINAL CORNER LOCATION. IT IS IN LINE WITH THE CENTER OF NORTH-SOUTH ROAD AND AN OLD FENCE LINE EAST. THE ROAD WEST IS ABOUT 7 FEET SOUTH OF THIS LOCATION. THE IRON PIN WAS LOWERED AND M.B. RUDE SET A 4" BY 17" CAST IRON MONUMENT TO MARK THIS CORNER.

IN MARCH 2005 E.G. RUD ESTABLISHED KANABEC COUNTY COORDINATES ON THIS LOCATION USING G.P.S. EQUIPMENT.