

CERTIFICATE OF LOCATION OF GOVERNMENT CORNER

EAST 1/4 Corner of Section 25, Township 39, Range 23, 4TH P.M.

STATE OF MINNESOTA, County of KANABEC

At the corner location shown on the sketch:
In March 2005 found this monument.

Kanabec County U.S. Survey Feet Coordinates
NAD 1983, HARN 1996 Adjustment
Obtained by RTK GPS Observation

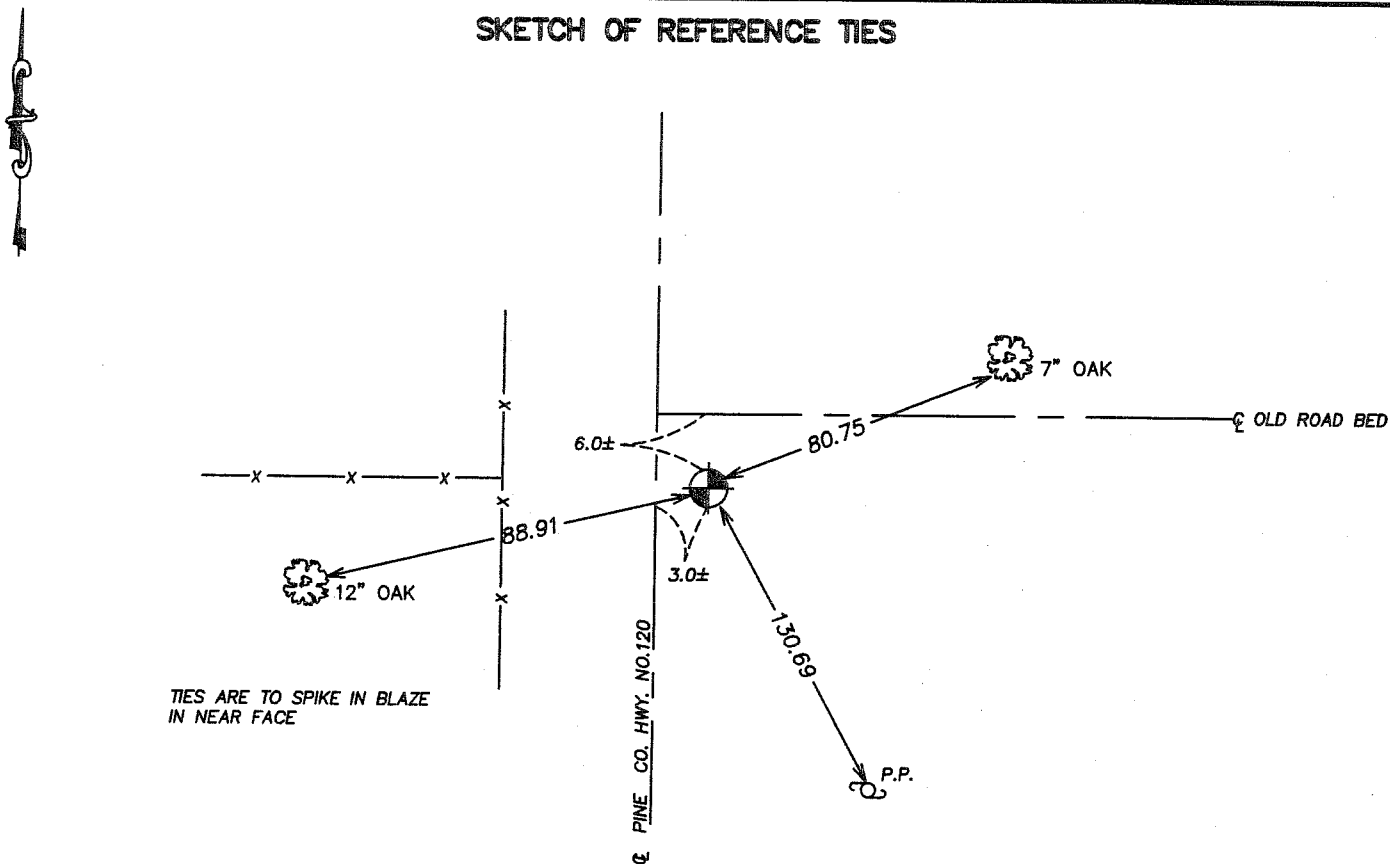
Northing= 139903.01

Easting= 438258.27

Note: NAD 1983, HARN 1996 Adjustment
coordinates are NOT compatible with
NAD 1983 coordinates

Note: 1 Meter=3937/1200 U.S. Survey Feet

SKETCH OF REFERENCE TIES



TIES ARE TO SPIKE IN BLAZE
IN NEAR FACE

Statement of evidence relative to this corner location is on back of page.

I hereby certify that this document and the data contained herein was prepared by me or under my direct supervision.

Ernest J. Reed 10-17-2005
Signature Date

Registration No. Minn No 9808

Land Surveyor, Professional Engineer
 County Surveyor, County Engineer

OFFICE OF THE COUNTY RECORDER

County of _____

I hereby certify that this document was filed in the County Recorder's office at _____ M. on the

_____ day of _____ A.D., 20__

County Recorder _____

BY _____ Deputy

DOCUMENT NO. _____

STATEMENT OF EVIDENCE

ALL OF THE ORIGINAL BEARING TREES ARE NOW GONE.

JOHN NELSON, THE KANABEC COUNTY SURVEYOR'S RECORDS SHOW HE USED THIS CORNER IN 1903, BUT DOES NOT SHOW WHAT WAS FOUND OR SET.

IN APRIL OF 1981, M.B. RUDE RAN A SURVEY AROUND SECTION 30 AND LOCATED THE LINES OF OCCUPATION AND EXISTING MONUMENTS.

THIS CORNER IS AT THE INTERSECTION OF ROADS NORTH-SOUTH AND OLD ROAD BED EAST AND FENCE LINES WEST.

ON MAY 5, 1981, M.B. RUDE MADE AN EXCAVATION WITH A BACKHOE AT THIS LOCATION. THE EXCAVATION WAS 15.00 FEET SQUARE, 3.00 FEET DEEP.

AT 1.00 FOOT BELOW THE SURFACE M.B. RUDE FOUND A 1" BY 2" WOODEN HUB. AT 1.50 FEET BELOW THE SURFACE UNDER THE HUB, M.B. RUDE FOUND A 6" PIECE OF 2" POINTED POST. AT 2.00 FEET BELOW THE SURFACE, BELOW THE HUB M.B. RUDE FOUND A 3" POINTED POST.

M.B. RUDE ACCEPTED THE 3" POINTED POST AS THE BEST AVAILABLE EVIDENCE OF THE ORIGINAL CORNER LOCATION, AS IT IS IN HARMONY WITH ACCEPTED LINES OF OCCUPATION AND SET A 4" BY 17" CAST IRON MONUMENT TO MARK THIS CORNER.

IN MARCH 2005 E.G. RUD AND SONS FOUND THIS MONUMENT AND ESTABLISHED KANABEC COUNTY COORDINATES ON THIS POSITION USING GPS EQUIPMENT.