

CERTIFICATE OF LOCATION OF GOVERNMENT CORNER

EAST 1/4 Corner of Section 36, Township 39, Range 23, 4TH P.M.
 STATE OF MINNESOTA, County of KANABEC

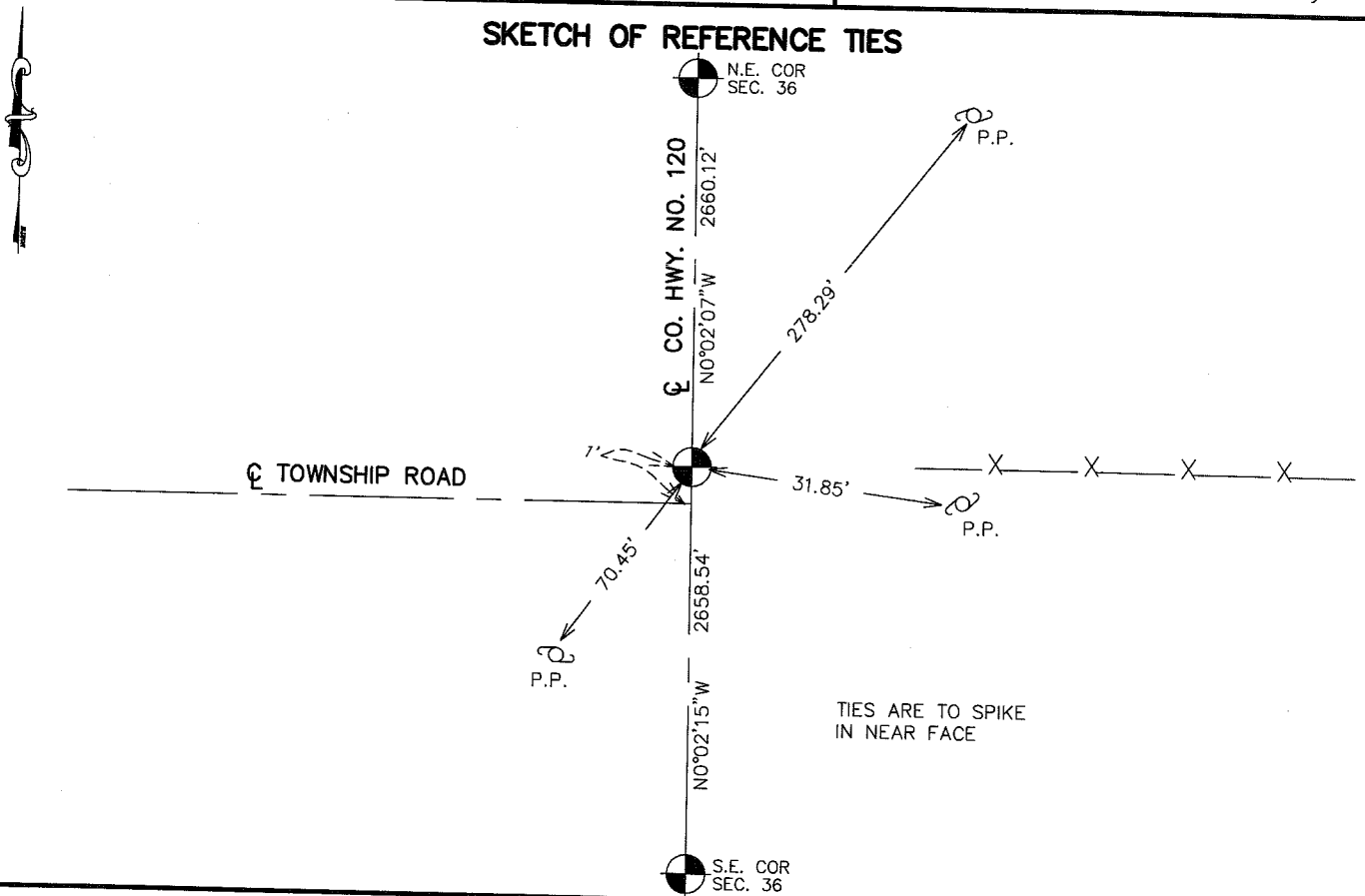
At the corner location shown on the sketch:
 IN MARCH 2005 FOUND THIS MONUMENT
 AND ESTABLISHED G.P.S. COORDINATES ON ITS LOCATION.

Kanabec County U.S. Survey Feet Coordinates
 NAD 1983, HARN 1996 Adjustment
 Obtained by RTK GPS Observation

Northing= 134610.09
 Easting= 438257.70

Note: NAD 1983, HARN 1996 Adjustment
 coordinates are NOT compatible with
 NAD 1983 coordinates
 Note: 1 Meter=3937/1200 U.S. Survey Feet

SKETCH OF REFERENCE TIES



Statement of evidence relative to this corner location is on back of page.

I hereby certify that this document and the data contained herein was prepared by me or under my direct supervision.

Ernest Blud 11-18-2005
 Signature Date

Registration No. MINN No. 9808

- Land Surveyor, Professional Engineer
 County Surveyor, County Engineer

OFFICE OF THE COUNTY RECORDER

County of _____

I hereby certify that this document was filed in the County Recorder's office at _____ M. on the _____ day of _____ A.D., 20____

County Recorder _____

BY _____ Deputy

DOCUMENT NO. _____

STATEMENT OF EVIDENCE

ALL OF THE ORIGINAL BEARING TREES ARE NOW GONE.

THERE IS AN EXISTING COUNTY HIGHWAY ALONG THE WEST LINE OF SECTION 31.

IN 1903, THE FORMER KANABEC COUNTY SURVEYOR, JOHN NELSON, MADE A SURVEY IN SECTION 36, TOWNSHIP 39, RANGE 23. HIS RECORDS SHOW HE SET THE EAST QUARTER CORNER OF SECTION 36 ON A LINE AND SPLIT BETWEEN THE NORTHEAST AND SOUTHEAST CORNERS OF SECTION 36. HE DOES NOT SHOW IF ANYTHING WAS SET AT THIS CORNER

ON MARCH 21, 1925, GEORGE JINKS, FILED A CORNER CERTIFICATE IN KANABEC COUNTY WHICH SHOWS HE FOUND A POST AND REPLACED IT WITH A STONE MARKED WITH A "+".

IN OCTOBER 27, 1987, M.B. RUDE MADE A 15' BY 15' BY 3' DEEP EXCAVATION WITH A BACKHOE AT THE INTERSECTION OF ROADS NORTH-SOUTH AND WEST AND FENCE LINE EAST. AT 1 FOOT BELOW THE SURFACE WE FOUND A 1" BY 16" IRON PIN, BUT NO STONE MARKED WITH A "+" WAS FOUND. IT IS ASSUMED THE STONE WAS REMOVED IN ROAD CONSTRUCTION AND REPLACED WITH THE IRON PIN.

THE IRON PIN WAS ACCEPTED AS THE PERPETUATED LOCATION OF JINK'S CORNER. IT IS WITHIN 1 FOOT OF A LINE AND SPLIT BETWEEN THE NORTHWEST AND SOUTHWEST CORNERS OF SECTION 31.

IN MARCH 2005 E.G. RUD AND SONS FOUND THIS MONUMENT AND ESTABLISHED KANABEC COUNTY COORDINATES ON THIS POSITION USING G.P.S. EQUIPMENT.