

CERTIFICATE OF LOCATION OF GOVERNMENT CORNER

EAST QUARTER Corner of Section 6, Township 38, Range 24, 4TH P.M.

STATE OF MINNESOTA, County of KANABEC

At the corner location shown on the sketch:
On 07/07/2004 Set a Kanabec County Monument.

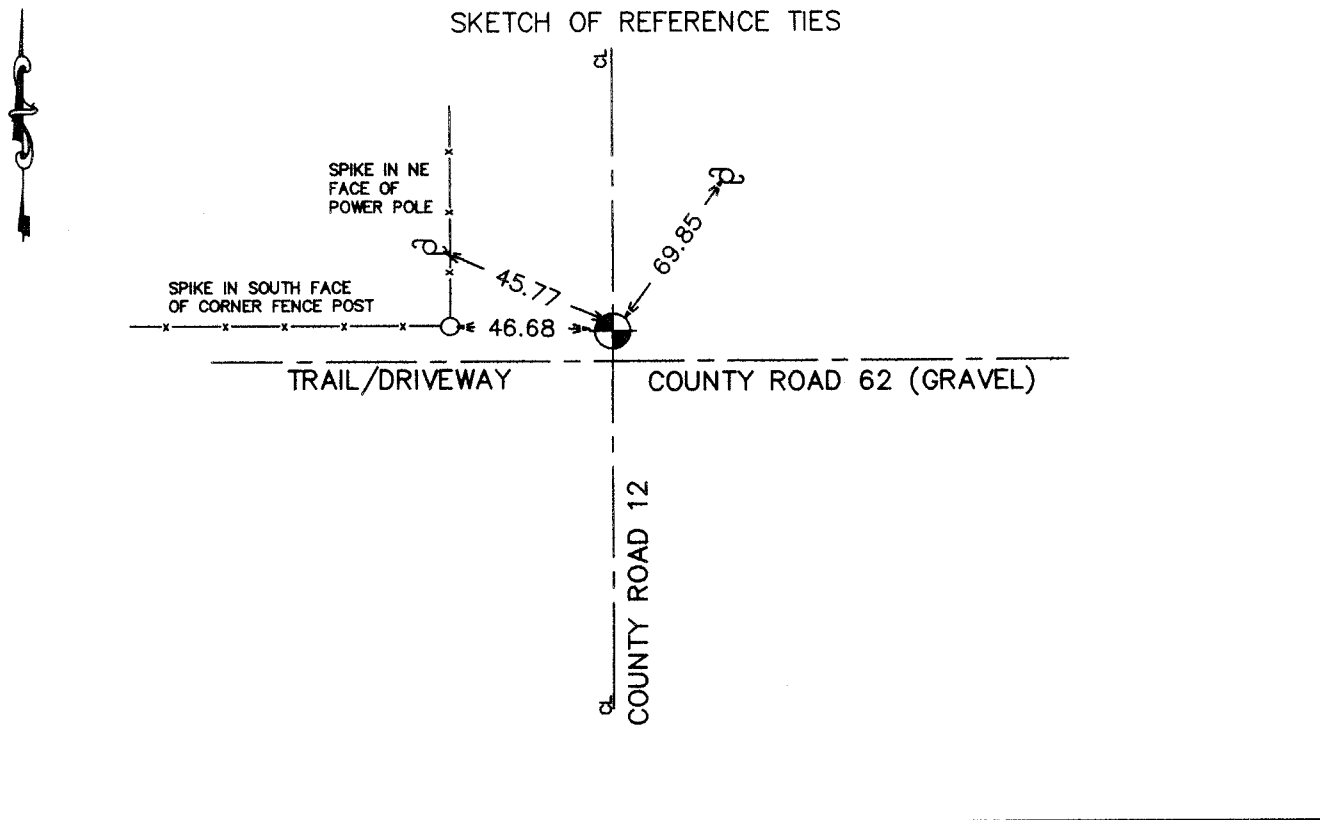
Kanabec County U.S. Survey Feet Coordinates
NAD 1983, HARN 1996 Adjustment
Obtained by RTK GPS Observation

Northing= 129602.28

Easting= 380427.31

Note: NAD 1983, HARN 1996 Adjustment
coordinates are NOT compatible with
NAD 1983 coordinates

Note: 1 Meter=3937/1200 U.S. Survey Feet



Statement of evidence relative to this corner location is on back of page.

I hereby certify that this document and the data contained herein was prepared by me or under my direct supervision.

Ernest J. Reed
Signature

8-03-2004
Date

Registration No. 9808

Land Surveyor, [] Professional Engineer

[] County Surveyor, [] County Engineer

OFFICE OF THE COUNTY RECORDER

County of _____

I hereby certify that this document was filed in the County Recorder's office at _____ M. on the

_____ day of _____ A.D., 20____

County Recorder _____

BY _____ Deputy

DOCUMENT NO. _____

STATEMENT OF EVIDENCE

E 1/4 COR OF SECTION 6, T 38, R 24

The original Government corner was set by Government Surveyor Silas Barnard in July 1855. Evidence of the original corner or bearing trees no longer remain. In March 1910, John Nelson made a survey of Section 5 and his notes indicate he set a stone at this corner. In 1933 the Kanabec County Highway Department ran a survey for the road and found a stone at this corner. Their notes show they measured 2637.7 to the ~~SE corner~~ ~~SE corner~~ corner of Section 6, also being a stone. In May 2004, we surveyed around Sections 4, 5, 8, and 9 to locate existing monumentation and tie in lines of occupation.

On July 7, 2004, we made an excavation 2.5'x18'x4.5', 1' into natural ground. At about 3 feet deep, we found a large boat spike that was bent, and an old wooden hub. We tied out the location of the base of the bent spike. At 4.5 feet down, directly under the location of the bent spike, we found a sandstone with an "x" carved on top. We measured 2636.7 to the SE corner of Section 6, versus 2637.7 by the County.

We removed the sandstone and placed a 1/2" iron pipe at the location of the "x" on the sandstone and spike at the road surface. We took ties and established Kanabec County coordinates on this position.