

Index No. 3824132

# CERTIFICATE OF LOCATION OF GOVERNMENT CORNER

NORTH QUARTER Corner of Section 7, Township 38, Range 24, 4TH P.M.

STATE OF MINNESOTA, County of KANABEC

At the corner location shown on the sketch:  
On 05/ /2004 Found a Kanabec County Monument.

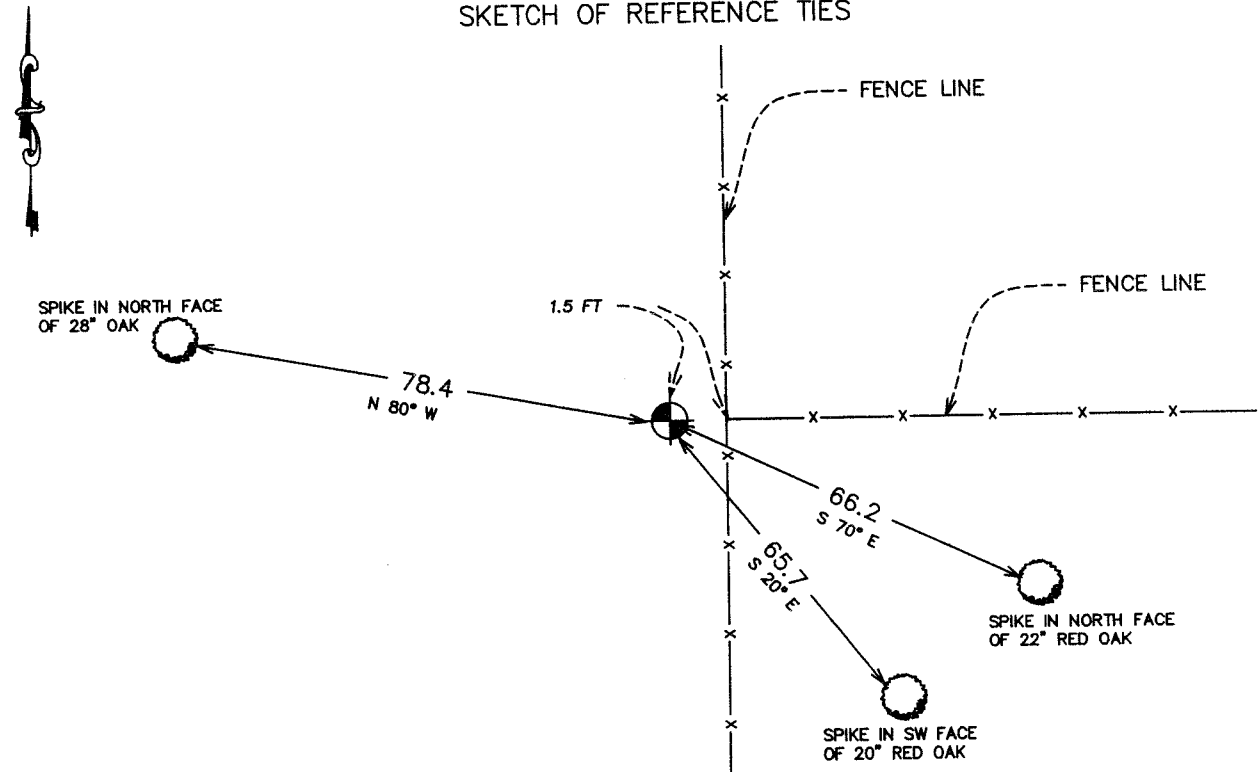
Kanabec County U.S. Survey Feet Coordinates  
NAD 1983, HARN 1996 Adjustment  
Obtained by RTK GPS Observation

Northing= 126953.13

Easting= 377744.82

Note: NAD 1983, HARN 1996 Adjustment  
coordinates are NOT compatible with  
NAD 1983 coordinates  
Note: 1 Meter=3937/1200 U.S. Survey Feet

## SKETCH OF REFERENCE TIES



Statement of evidence relative to this corner location is on back of page.

I hereby certify that this document and the data contained herein was prepared by me or under my direct supervision.

Ernest J. Reed  
Signature

6-14-04  
Date

Registration No. 9808

## OFFICE OF THE COUNTY RECORDER

County of \_\_\_\_\_

I hereby certify that this document was filed in the County Recorder's office at \_\_\_\_\_ M. on the \_\_\_\_\_ day of \_\_\_\_\_ A.D., 20 \_\_\_\_\_

County Recorder \_\_\_\_\_

STATEMENT OF EVIDENCE  
(FROM TIE SHEET 488)

On June 21, 1977, we set a Cast Aluminum Monument at the fence corner.

This location fits within 5 feet of the line and proportional measurement between the Northeast and Northwest corners of Section 7.

The fence corner has been accepted as the Quarter corner by the area landowners.

In May 2004, we found a Cast Iron Monument set by M.B. Rude. We took new ties and established Kanabec County Coordinates using G.P.S. equipment on this location.