

# CERTIFICATE OF LOCATION OF GOVERNMENT CORNER

North Quarter Corner of Section 8, Township 38 North, Range 24 West,  
4th Principal Meridian, Kanabec County, State of Minnesota

At the corner location shown on the sketch:  
On 4/13/2012 set a 1/2" x 14" Iron Pipe Monument with Aluminum Cap.

Kanabec County U.S. Survey Feet Coordinates  
NAD 1983, HARN 1996 Adjustment  
Obtained by RTK GPS observation  
Northing: 127019.6405  
Easting: 383034.9434

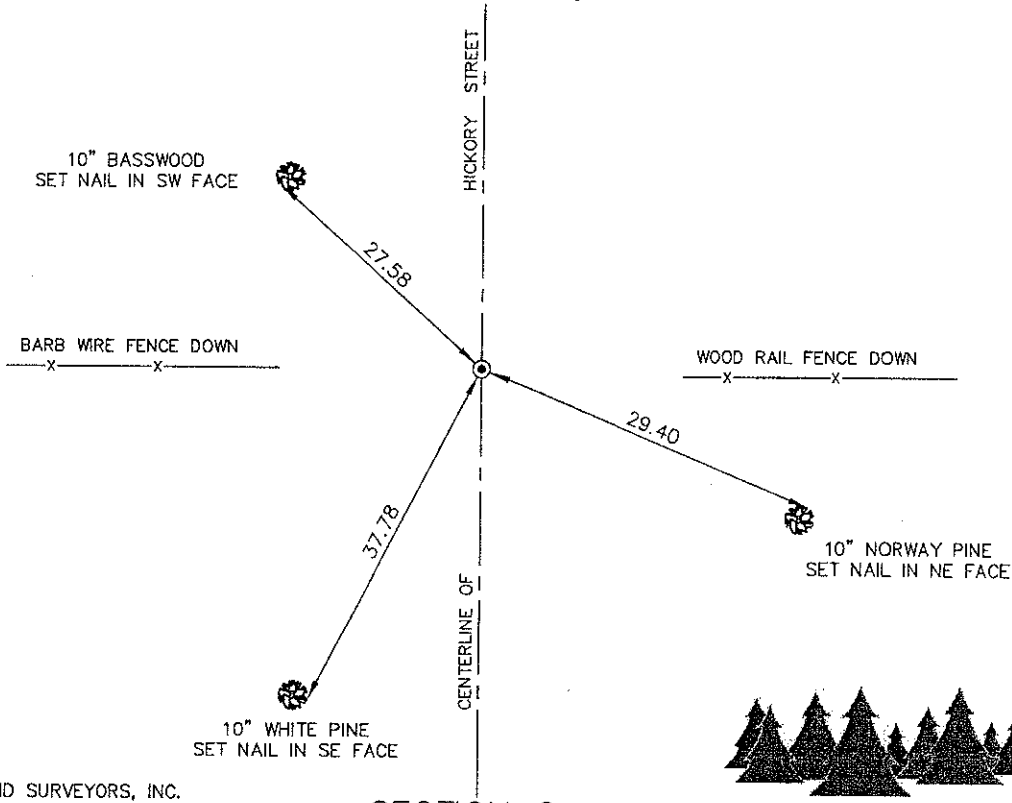
Note: NAD 1983, HARN 1996 Adjustment coordinates are NOT compatible with NAD 1983 coordinates  
Note: 1 Meter = 3937/1200 U.S. Survey Feet

## SKETCH OF REFERENCE TIES

DISTANCE UNITS FOR THIS DRAWING IS  
U.S. SURVEY FEET

NOT TO SCALE

### SECTION 5



114/43

KROSCHEL LAND SURVEYORS, INC.  
ASSUMES NO LIABILITY FOR THE ACCURACY  
OF THE GPS COORDINATES SHOWN HEREON.  
ALL COORDINATES AND DIMENSIONS  
SHOULD BE FIELD VERIFIED BY THE USER.

### SECTION 8




**Kroschel Land Surveyors, Inc.**

1639 Main Street North, Suite 6, Pine City, MN 55063  
Phone: 320-629-3267 Fax: 320-629-0176

Statement of evidence relative to this corner location is on back of page.

I hereby certify that this survey, plan, or report was prepared by me or under my direct supervision, that the United States public land survey monument record is correct and complete to the best of my knowledge and belief, and that I am a duly Licensed Land Surveyor under the laws of the State of Minnesota.

  
Tyler J. Kroschel

5-22-2012  
Date

License No. 44490

Land Surveyor       County Surveyor

**OFFICE OF THE COUNTY RECORDER**  
County of Kanabec

I hereby certify that this document was filed in the County Recorder's office at \_\_\_\_\_ .M. on the \_\_\_\_\_ day of \_\_\_\_\_ A.D., 20\_\_\_\_  
County Recorder \_\_\_\_\_

By \_\_\_\_\_, Deputy

**DOCUMENT NO.** \_\_\_\_\_

Statement of Evidence:

In August of 1855, Deputy Surveyor Silas Barnard set a post to mark the North Quarter Corner of Section 8, Township 38 North, Range 24 West, 4th Principal Meridian.

Reference ties were taken to:

- 8 inch Sugar Maple at North 60 degrees East a distance of 22 links
- 12 inch Sugar Maple at South 8 degrees East a distance of 25 links

All of the original Government corner evidence was searched for. None was found.

1896--Book A, Page 102 survey by Nels Sjodin for a township road. Sjodin shows a distance of 79.14 chains (5223.24 feet) to the South Quarter corner of Section 8 and a distance of 40 chains to the center of Section 5. He does not state what was found or set at the North Quarter corner of Section 8.

1896--A Township Supervisor's Road Order was filed in the Office of the County Auditor opening a Township road along the north--south quarter line of Section 8. There is a survey of the road that is signed by Nels Sjodin on 12/02/1896. Sjodin shows the same distances north and south.

1910--County Surveyor John Nelson made a survey around Section 5, T.38, R.24. He measured a distance of 81.18 chains along the south line of Section 5 and set a stone with "x" half way and on line between the Southwest and Southeast corners of Section 5. He also set 2 stones for reference ties.

2009(info taken from Ernie Rud)--County Surveyor Ernie Rud, RLS 9808, made an excavation at the center of the township road and fence lines east and west. No evidence was found in the excavation. No monument was set at that time.

In April 2012, I made a survey around Section 8, Township 38 North, Range 24 West, 4th Principal Meridian for John Stephens to locate existing monuments, lines of occupation and establish search areas.

On 4/13/2012, I set a 1/2" x 14" Iron Pipe with Aluminum Cap at the center of the township road and fence line east. Established reference ties and assigned Kanabec County Coordinates. I measure 5247.48 feet to the south quarter corner of Section 8. I measure 2695.01 feet to the Northeast corner of Section 8 and 2664.85 feet to the Northwest corner of Section 8. I measure 2634.5 feet to a found 1/2" iron pipe at the center line intersection near the center of Section 5.

This location is determined to be the best available evidence of the original corner location.



**Kroschel Land Surveyors, Inc.**

1639 Main Street North, Suite 6, Pine City, MN 55063  
Phone: 320-629-3267 Fax: 320-629-0176