

# CERTIFICATE OF LOCATION OF GOVERNMENT CORNER

SOUTHEAST Corner of Section 6, Township 38, Range 24, 4TH P.M.

STATE OF MINNESOTA, County of KANABEC

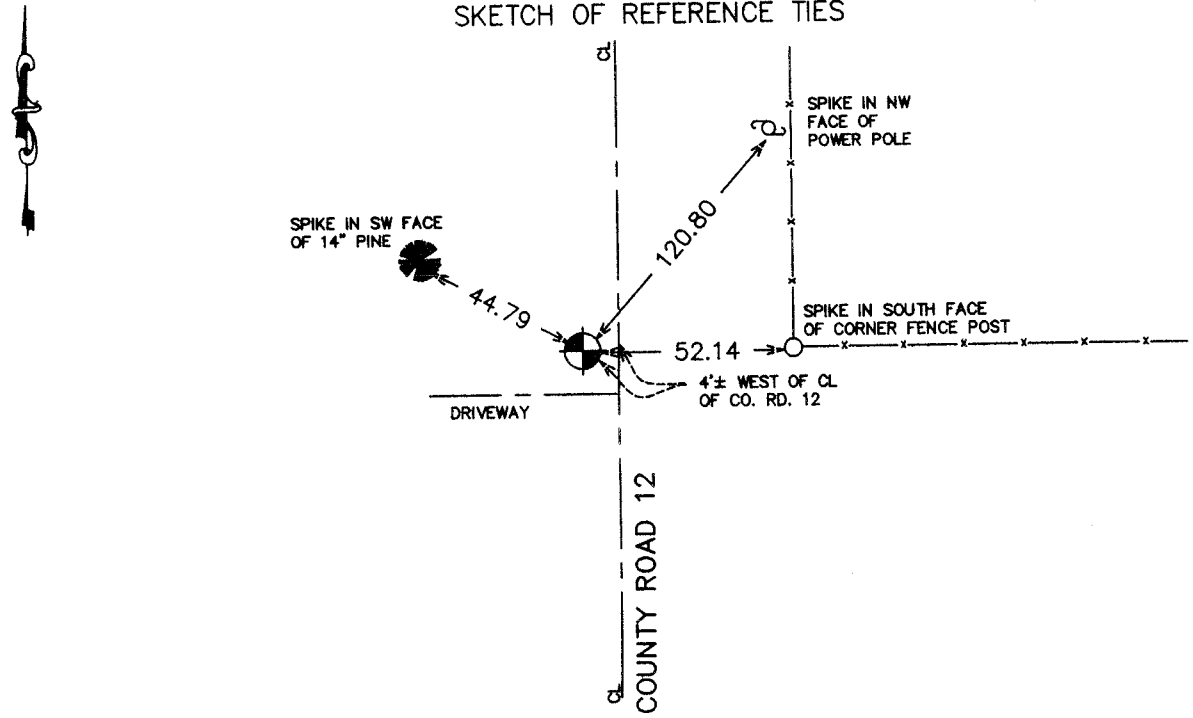
At the corner location shown on the sketch:  
On 07/07/2004 Set a Kanabec County Monument.

Kanabec County U.S. Survey Feet Coordinates  
NAD 1983, HARN 1996 Adjustment  
Obtained by RTK GPS Observation

Northing= 126966.23  
Easting= 380370.70

Note: NAD 1983, HARN 1996 Adjustment coordinates are NOT compatible with NAD 1983 coordinates  
Note: 1 Meter=3937/1200 U.S. Survey Feet

SKETCH OF REFERENCE TIES



Statement of evidence relative to this corner location is on back of page.

I hereby certify that this document and the data contained herein was prepared by me or under my direct supervision.

*Ernest Reed* 8-03-2004  
Signature Date

Registration No. 9808

- Land Surveyor,     Professional Engineer  
 County Surveyor,     County Engineer

**OFFICE OF THE COUNTY RECORDER**

County of \_\_\_\_\_  
I hereby certify that this document was filed in the County Recorder's office at \_\_\_\_\_ M. on the \_\_\_\_\_ day of \_\_\_\_\_ A.D., 20\_\_\_\_

County Recorder \_\_\_\_\_

BY \_\_\_\_\_ Deputy

**DOCUMENT NO.** \_\_\_\_\_

## STATEMENT OF EVIDENCE

SE COR OF SECTION 6, T 38, R 24

The original Government corner was set by Government Surveyor Silas Barnard in July 1855. Evidence of the original corner or bearing trees no longer remain. In March 1910, John Nelson made a survey of Section 5 and his notes indicate he set a stone at this corner. In 1933 the Kanabec County Highway Department ran a survey for the road and found a stone at this corner. Their notes show they measured 2637.7 to the East Quarter corner of Section 6, also being a stone. In May 2004, we surveyed around Sections 4, 5, 8, and 9 to locate existing monumentation and tie in lines of occupation.

On July 7, 2004, we made an excavation 8'x10'x5', 1' into natural ground. At about 2 feet deep, we found a boat spike. We continued digging and found a sandstone with an "x" carved on top at the natural ground level. The stone was 2636.7 feet from the East Quarter corner of Section 6 versus 2637.7 feet measured by the County.

We placed a 1/2" iron pipe at the location of the "x" on the sandstone at the road surface. We took ties and established Kanabec County coordinates on this position.