

CERTIFICATE OF LOCATION OF GOVERNMENT CORNER

EAST QUARTER Corner of Section 7, Township 38, Range 24, 4TH P.M.

STATE OF MINNESOTA, County of KANABEC

At the corner location shown on the sketch:
On 05/ /2004 Found a Kanabec County Monument.

Kanabec County U.S. Survey Feet Coordinates
NAD 1983, HARN 1996 Adjustment
Obtained by RTK GPS Observation

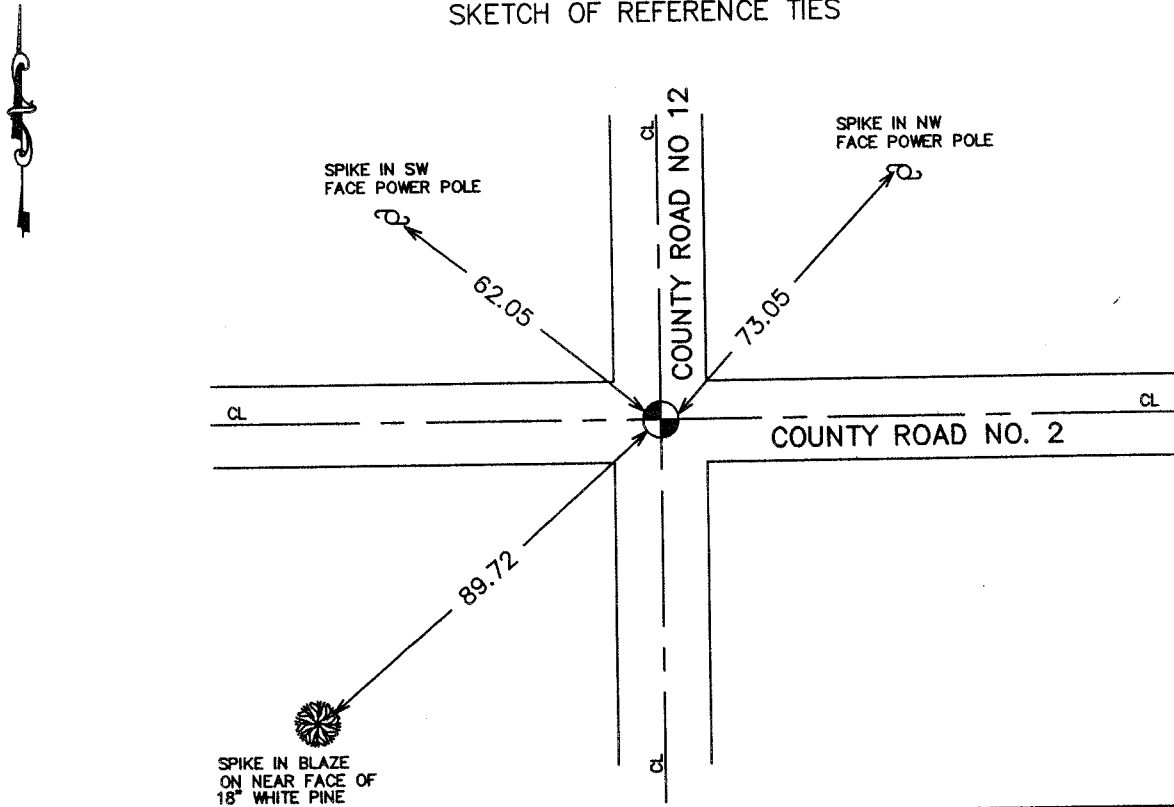
Northing= 124364.19

Easting= 380367.69

Note: NAD 1983, HARN 1996 Adjustment
coordinates are NOT compatible with
NAD 1983 coordinates

Note: 1 Meter=3937/1200 U.S. Survey Feet

SKETCH OF REFERENCE TIES



Statement of evidence relative to this corner location is on back of page.

I hereby certify that this document and the data contained herein was prepared by me or under my direct supervision.

Ernest Blund
Signature

6-14-04
Date

Registration No. 9808

Land Surveyor, Professional Engineer

County Surveyor, County Engineer

OFFICE OF THE COUNTY RECORDER

County of _____

I hereby certify that this document was filed in the County Recorder's office at _____ M. on the

_____ day of _____ A.D., 20____

County Recorder _____

BY _____ Deputy

DOCUMENT NO. _____

STATEMENT OF EVIDENCE
(FROM TIE SHEET 487)

In 1901, Mr. John Nelson, the County Surveyor, located this corner. His ties are now gone.

On June 21, 1977, we found a spike on the surface. We offset the spike and made an excavation with the county backhoe at 1 foot down, and we found a 1/2" rebar. At 1.5 feet down, we found a large bent spike, and at 2.5 feet down in natural ground, we found a large spike.

All points fall within a one foot circle. We backfilled and set a Cast Iron Monument 4" down at rebar location.

In May 2004, we found this monument set by M.B. Rude. We took new ties and established Kanabec County Coordinates using G.P.S. equipment on this location.