

Index No. 3824128

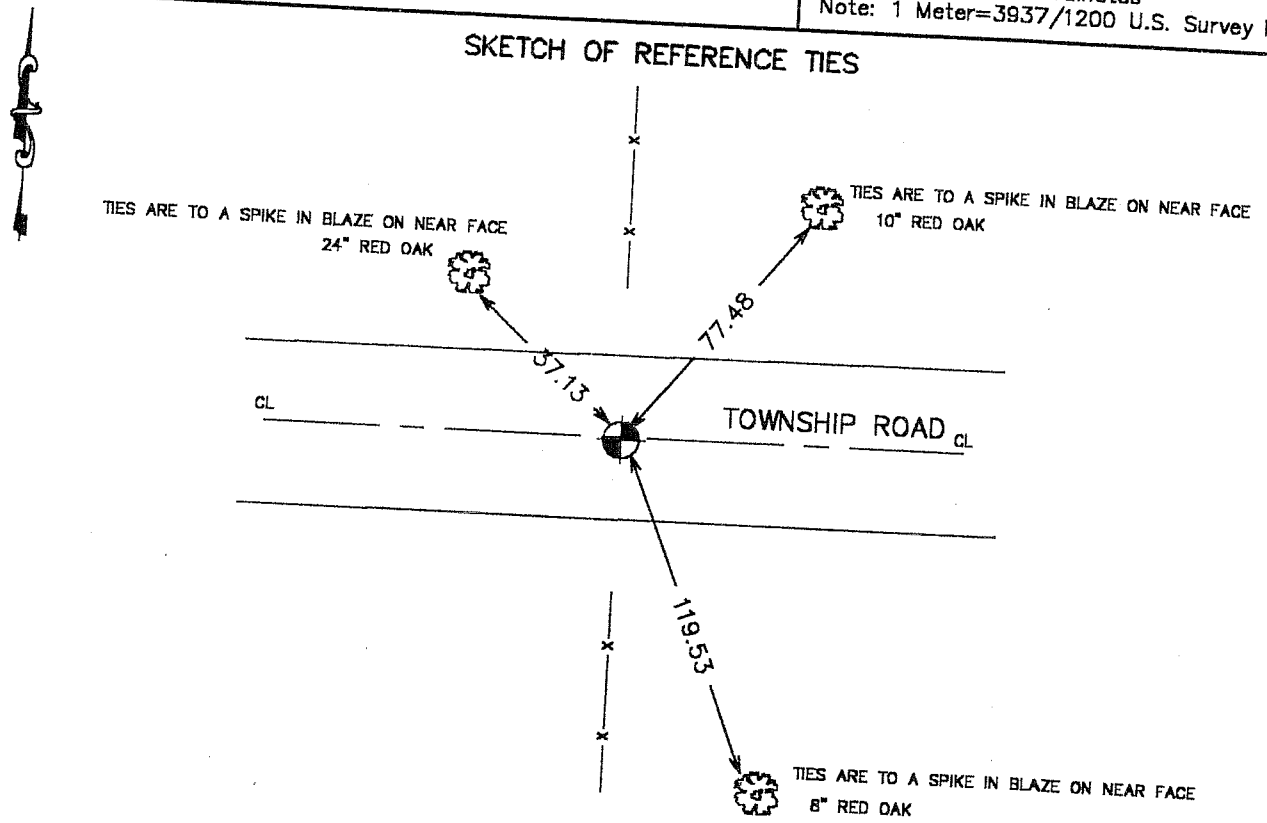
# CERTIFICATE OF LOCATION OF GOVERNMENT CORNER

SOUTH QUARTER Corner of Section 7, Township 38, Range 24, 4TH P.M.  
STATE OF MINNESOTA, County of KANABEC

At the corner location shown on the sketch:  
On 03/ /2002 Found a COUNTY IRON MONUMENT.

Kanabec County U.S. Survey Feet Coordinates  
NAD 1983, HARN 1996 Adjustment  
Obtained by RTK GPS Observation  
Northing= 121743.976  
Easting= 377721.506  
Note: NAD 1983, HARN 1996 Adjustment  
coordinates are NOT compatible with  
NAD 1983 coordinates  
Note: 1 Meter=3937/1200 U.S. Survey Feet

## SKETCH OF REFERENCE TIES



Statement of evidence relative to this corner location is on back of page.

I hereby certify that this document and the data contained herein was prepared by me or under my direct supervision.

Ernst Blud 5-08-2003  
Signature Date

Registration No. 9808

Land Surveyor,  Professional Engineer  
 County Surveyor,  County Engineer

## OFFICE OF THE COUNTY RECORDER

County of \_\_\_\_\_  
I hereby certify that this document was filed in the County Recorder's office at \_\_\_\_\_ M. on the \_\_\_\_\_ day of \_\_\_\_\_ A.D., 20\_\_\_\_

County Recorder \_\_\_\_\_  
BY \_\_\_\_\_ Deputy  
DOCUMENT NO. \_\_\_\_\_

STATEMENT OF EVIDENCE

SEE TIE SHEET NO. 489