

# CERTIFICATE OF LOCATION OF GOVERNMENT CORNER

SOUTHEAST Corner of Section 7, Township 38, Range 24, 4TH P.M.  
STATE OF MINNESOTA, County of KANABEC

At the corner location shown on the sketch:  
On    /    / 200 Found a CAST ALUMINUM MONUMENT.

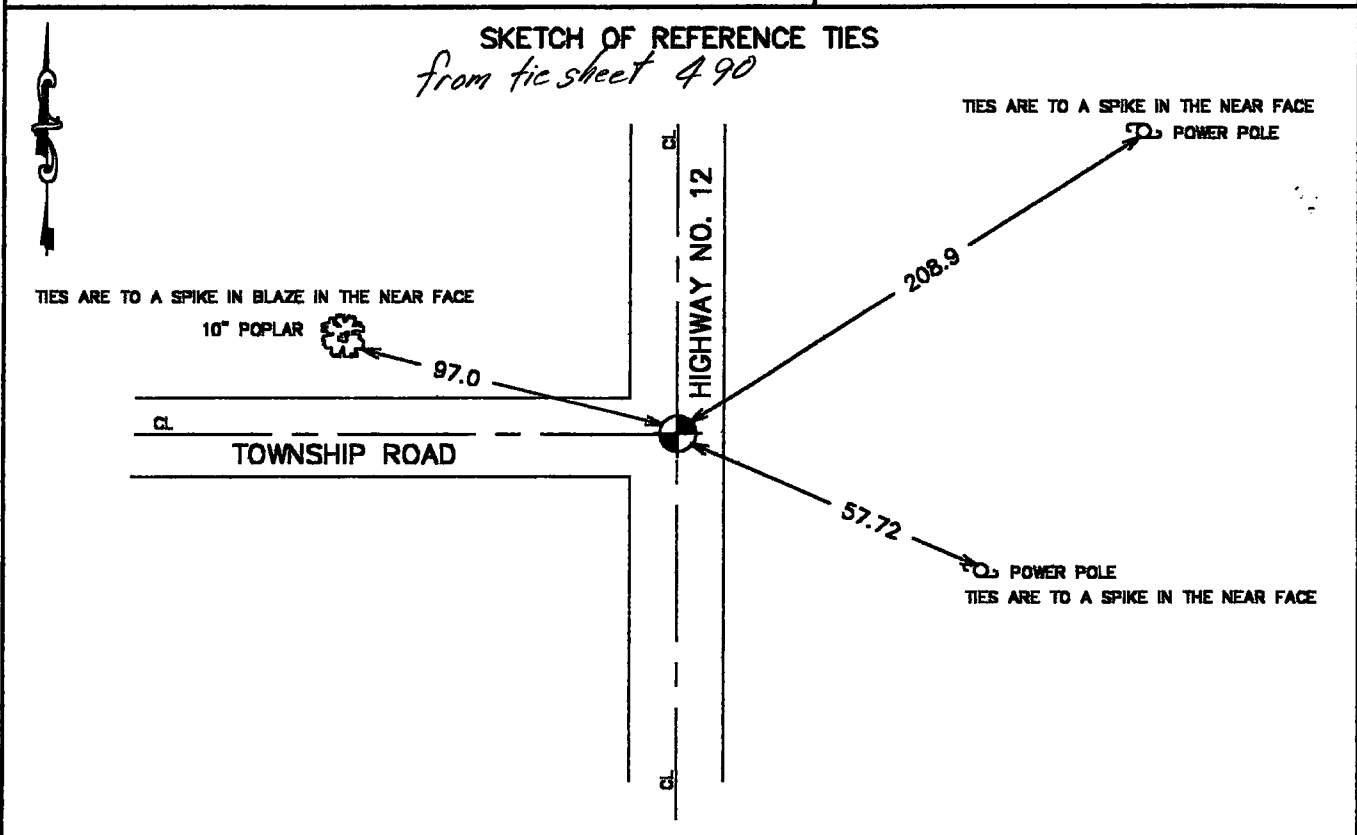
Kanabec County U.S. Survey Feet Coordinates  
NAD 1983, HARN 1996 Adjustment  
Obtained by RTK GPS Observation

Northing= 121773.936

Easting= 380367.936

Note: NAD 1983, HARN 1996 Adjustment  
coordinates are NOT compatible with  
NAD 1983 coordinates

Note: 1 Meter=3937/1200 U.S. Survey Feet



Statement of evidence relative to this corner location is on back of page.

I hereby certify that this document and the data contained herein was prepared by me or under my direct supervision.

Ernest J. Rud 5-08-2003  
Signature Date

Registration No. 9808

Land Surveyor,  Professional Engineer  
 County Surveyor,  County Engineer

## OFFICE OF THE COUNTY RECORDER

County of Kanabec

I hereby certify that this document was filed in the County Recorder's office at 1:30 P.M. on the 14<sup>th</sup> day of May A.D., 2003

County Recorder Rhonda A. Olson  
BY \_\_\_\_\_ Deputy

DOCUMENT NO. \_\_\_\_\_

STATEMENT OF EVIDENCE

SEE TIE SHEET NO. 490

# CERTIFICATE OF LOCATION OF GOVERNMENT CORNER

S.E. Corner of Section 7, Township 38, Range 24, 4<sup>th</sup> P.M.

STATE OF MINNESOTA, County of KANABEC

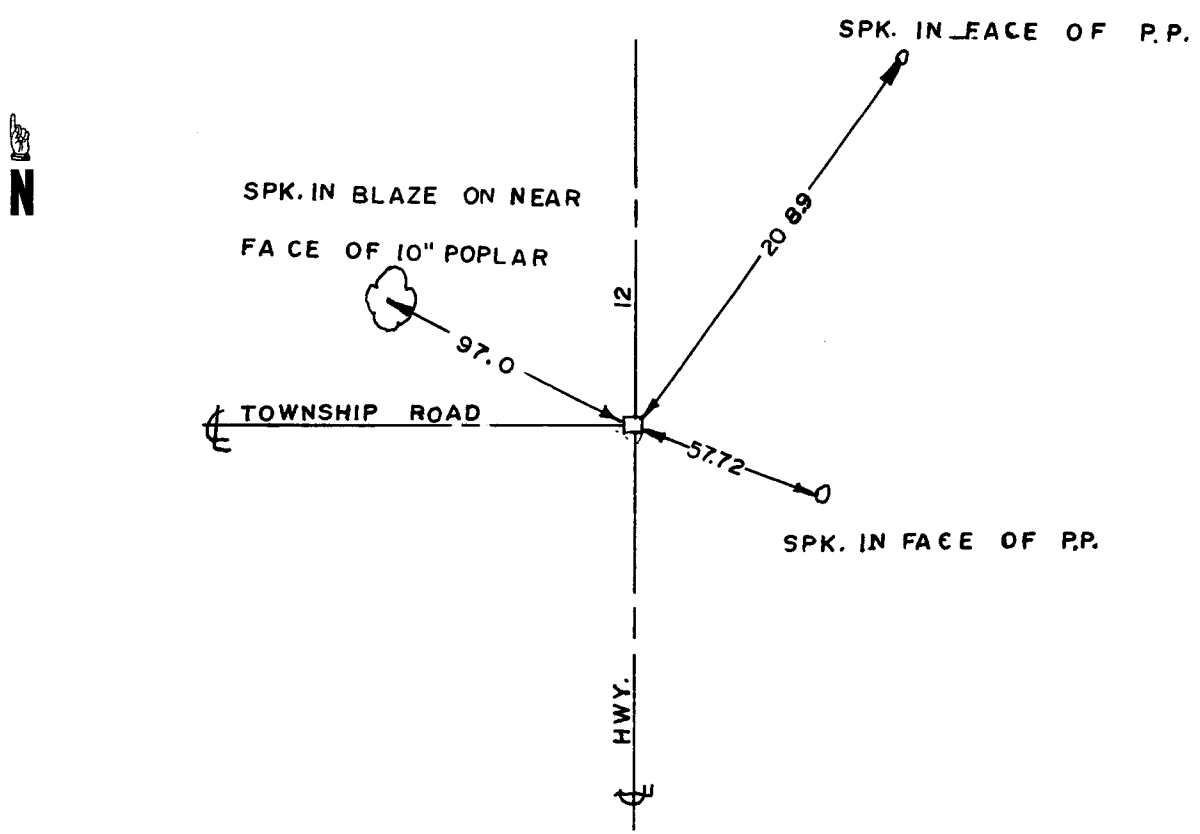
At the corner location shown on the sketch

On 6/2/77 found a 12" SANDSTONE WITH AN X ON TOP  
Date

left monument as found, [ ] lowered monument, [ ] removed monument (explain)

On 6/2/77 placed a CAST ALUMINUM MONUMENT  
Date

### SKETCH OF REFERENCE TIES



Statement of evidence relative to this corner location is on back of page.

I hereby certify that this document and the data contained herein was prepared by me or under my direct supervision.

Marshall B. [Signature] 6-30-77  
Signature Date

Registration No. 8195

Land Surveyor, [ ] Professional Engineer

County Surveyor, [ ] County Engineer

### OFFICE OF THE REGISTER OF DEEDS

County of Kanabec

I hereby certify that this document was filed in the Register of Deeds office at 9 A. M. on the

1<sup>st</sup> day of August A.D., 1977  
County Recorder of Delma J. Besser  
Register of Deeds

By \_\_\_\_\_, Deputy

DOCUMENT NO. \_\_\_\_\_

## STATEMENT OF EVIDENCE

In 1901, Mr. John Nelson, the County Surveyor, located this corner. His ties are now gone.

We dug a 10 foot by 15 foot hole with the County backhoe, 7 feet below the surface. We found a 12" square sandstone with an "X" on the top. We offset the sandstone monument, back filled the excavation and set a 4" by 17" Cast Aluminum Monument 0.40 feet below the surface.