

# CERTIFICATE OF LOCATION OF GOVERNMENT CORNER

EAST QUARTER Corner of Section 18, Township 39, Range 24, 4TH P.M.  
 STATE OF MINNESOTA, County of KANABEC

At the corner location shown on the sketch:  
 On 01/ /2003 Found a KANABEC COUNTY MONUMENT.

Kanabec County U.S. Survey Feet Coordinates  
 NAD 1983, HARN 1996 Adjustment  
 Obtained by RTK GPS Observation

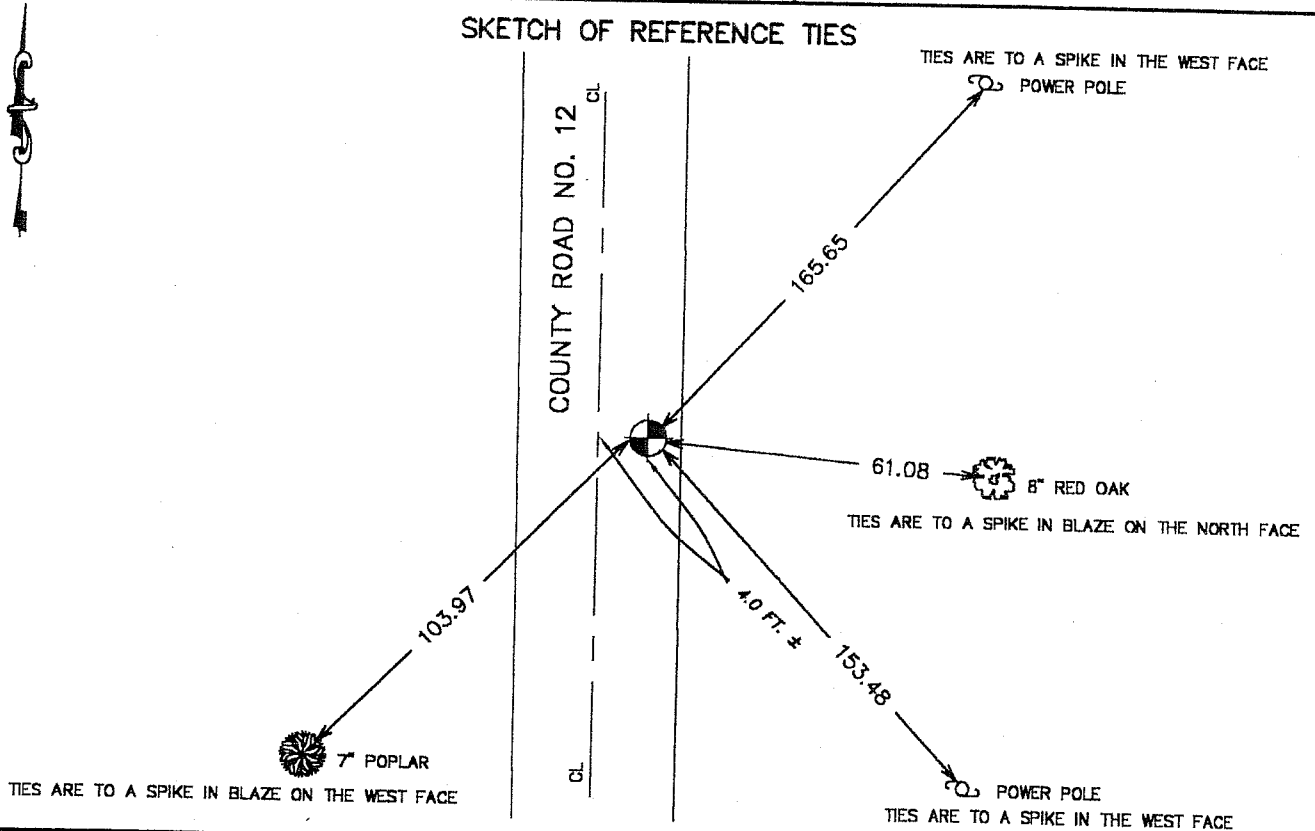
Northing= 119155.475

Easting= 380329.947

Note: NAD 1983, HARN 1996 Adjustment  
 coordinates are NOT compatible with  
 NAD 1983 coordinates

Note: 1 Meter=3937/1200 U.S. Survey Feet

### SKETCH OF REFERENCE TIES



Statement of evidence relative to this corner location is on back of page.

I hereby certify that this document and the data contained herein was prepared by me or under my direct supervision.

Ernest J. Paul 5-05-2003  
Signature Date

Registration No. 9808

- Land Surveyor,     Professional Engineer  
 County Surveyor,     County Engineer

### OFFICE OF THE COUNTY RECORDER

County of \_\_\_\_\_

I hereby certify that this document was filed in the County Recorder's office at \_\_\_\_\_ M. on the \_\_\_\_\_ day of \_\_\_\_\_ A.D., 20\_\_\_\_

County Recorder \_\_\_\_\_

BY \_\_\_\_\_ Deputy

DOCUMENT NO. \_\_\_\_\_

## STATEMENT OF EVIDENCE

Original corner was set in July 1855 by Silas Barnard. Original bearing trees are all gone.

On August 29, 1901 John Nelson did a road survey for County Road 12 as recorded in Book 2 of Surveys Page 9.

He indicated setting a stone at Northeast and Southeast corner of Section 18 but nothing at the East Quarter corner.

In October 1919 Norm Swenson ran this line measuring 5234.9 feet.

In 2000 and 2001 we did a survey of Section 17. We measured this east line of 18 to be 2637.36 feet. We set the East Quarter corner on line and split between Northeast and Southeast corners of Section 18. This fits occupation lines in Section 17 and 18 very well. No excavation was made as this was in a cut area when County Road 12 was rebuilt. We set a Kanabec County Monument and took ties.

In January 2003 we established Kanabec County Coordinates on this corner.