

CERTIFICATE OF LOCATION OF GOVERNMENT CORNER

SOUTH QUARTER Corner of Section 17, Township 39, Range 24, 4TH P.M.
 STATE OF MINNESOTA, County of KANABEC

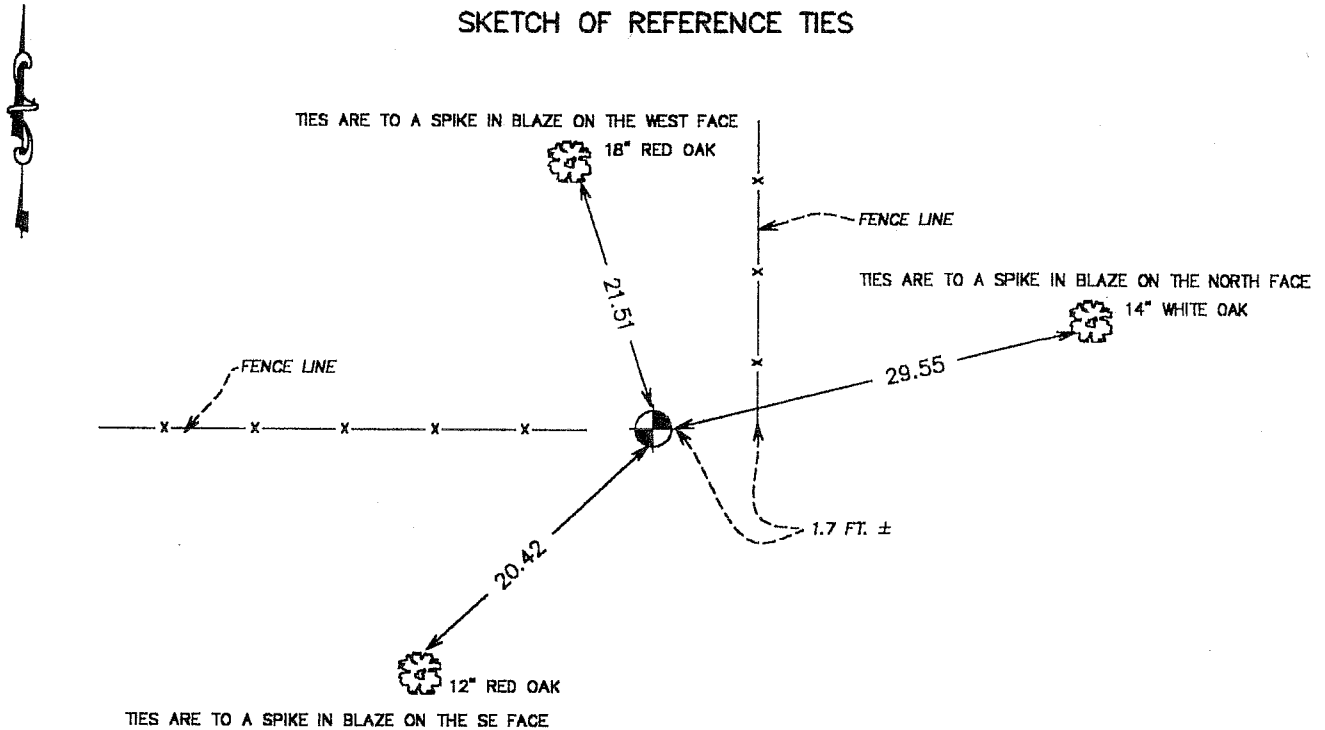
At the corner location shown on the sketch:
 On 03/ /2002 Set a KANABEC COUNTY MONUMENT.

Kanabec County U.S. Survey Feet Coordinates
 NAD 1983, HARN 1996 Adjustment
 Obtained by RTK GPS Observation

Northing= 16540.287
 Easting= 382933.408

Note: NAD 1983, HARN 1996 Adjustment
 coordinates are NOT compatible with
 NAD 1983 coordinates
 Note: 1 Meter=3937/1200 U.S. Survey Feet

SKETCH OF REFERENCE TIES



Statement of evidence relative to this corner location is on back of page.

I hereby certify that this document and the data contained herein was prepared by me or under my direct supervision.

Ernest J. Paul 5-05-2003
Signature Date

Registration No. 9808

Land Surveyor, [] Professional Engineer
 [] County Surveyor, [] County Engineer

OFFICE OF THE COUNTY RECORDER

County of _____

I hereby certify that this document was filed in the County Recorder's office at _____ M. on the _____ day of _____ A.D., 20____

County Recorder _____
 BY _____ Deputy

DOCUMENT NO. _____

STATEMENT OF EVIDENCE

Original corner was set in July 1855 by Silas Barnard. Original bearing trees are all gone.

We researched survey records at Kanabec County and could not find any records of surveys along this line.

Fred Swenson (land owner in Section 17) gave us copies of notes his father (Norm Swenson) had drafted from measurements he had done in 1919.

Norm measured this line and showed he set the Quarter corner on line and split between the Southeast and Southwest Quarter corners of Section 17. Fred Swenson showed us a half inch Iron Pipe he had set at the base of an old corner fence post. This fell 1.7+/- feet east of a point equidistant and on line between Southeast and Southwest corners of Section 17.

We set a Kanabec County Monument on line and equidistant from Southeast and Southwest corners of Section 16. In March 2002 we established Kanabec County Coordinates on this corner.