

CERTIFICATE OF LOCATION OF GOVERNMENT CORNER

SOUTHWEST Corner of Section 17, Township 38, Range 24, 4TH P.M.

STATE OF MINNESOTA, County of KANABEC

At the corner location shown on the sketch:
On 03/ /2002 Found a #7 rebar with Kanabec County Aluminum cap.

Kanabec County U.S. Survey Feet Coordinates
NAD 1983, HARN 1996 Adjustment
Obtained by RTK GPS Observation

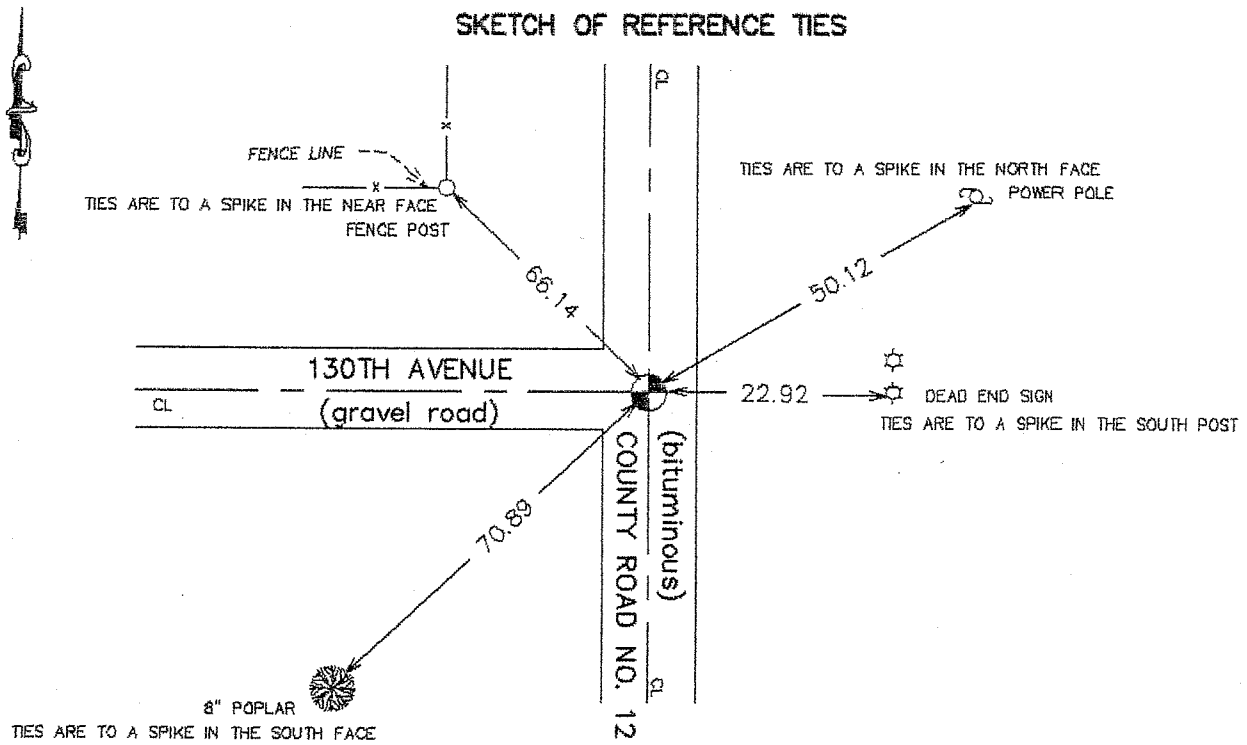
Northing= 116536.855

Easting= 380292.046

Note: NAD 1983, HARN 1996 Adjustment coordinates are NOT compatible with NAD 1983 coordinates

Note: 1 Meter=3937/1200 U.S. Survey Feet

SKETCH OF REFERENCE TIES



Statement of evidence relative to this corner location is on back of page.

I hereby certify that this document and the data contained herein was prepared by me or under my direct supervision.

Ernest J. Reed 8-08-2003
Signature Date

Registration No. 9808

- Land Surveyor, Professional Engineer
 County Surveyor, County Engineer

OFFICE OF THE COUNTY RECORDER

County of _____

I hereby certify that this document was filed in the County Recorder's office at _____ M. on the _____ day of _____ A.D., 20____

County Recorder _____
BY _____ Deputy

DOCUMENT NO. _____

STATEMENT OF EVIDENCE

Original corner was set by Silas Barnard.

Original bearing trees no longer remain.

In August 1901 John Nelson (County Surveyor) did a road survey for County Road No. 12 and measured from the East Quarter corner of Section 19 to the Northwest corner of Section 17. He measured 118.47 chains or 7819.02 feet.

Today we measured that to be 7854.03 feet.

Norm Swenson (land owner in Section 17) measured the west line of Section 17 to be 5234.9 feet in 1919.

When we prorate John Nelsons chainage against todays measurement we come up with a distance of 5237.35 feet for the West line of Section 17.

Therefore we set the Southwest corner of Section 17 at a prorated Nelsons chainage between perpetuated corner stones set by John Nelson in 1901.

For a east-west direction we set the corner on centerline of County Road No. 12 as this is where the two located stones of John Nelsons were found.

In May 2001 we excavated a 15 foot by 20 foot by 10 foot deep hole at this location. Found several stones, but none with any "X" on them.

This east-west location fits a pro-rated distance along the north line of Section 19 and North Quarter corner and Northwest corner of Section 19 set by M.B. Rude.

The split on South line of Section 17 also falls 1.7 feet west of past location at South Quarter corner of Section 17 which was set by Swenson. We set a monument and took ties. In March 2002 we established Kanabec County coordinates on this corner.