

3824121

# CERTIFICATE OF LOCATION OF GOVERNMENT CORNER

East quarter Corner of Section 19, Township 38, Range 24, 4th P.M.

STATE OF MINNESOTA, County of KANABEC

At the corner location shown on the sketch:

*Reset a 1/2" x 5" iron pipe with cap # 9808*

Kanabec County U.S. Survey Feet Coordinates  
NAD 1983, HARN 1996 Adjustment  
Obtained by RTK GPS Observation

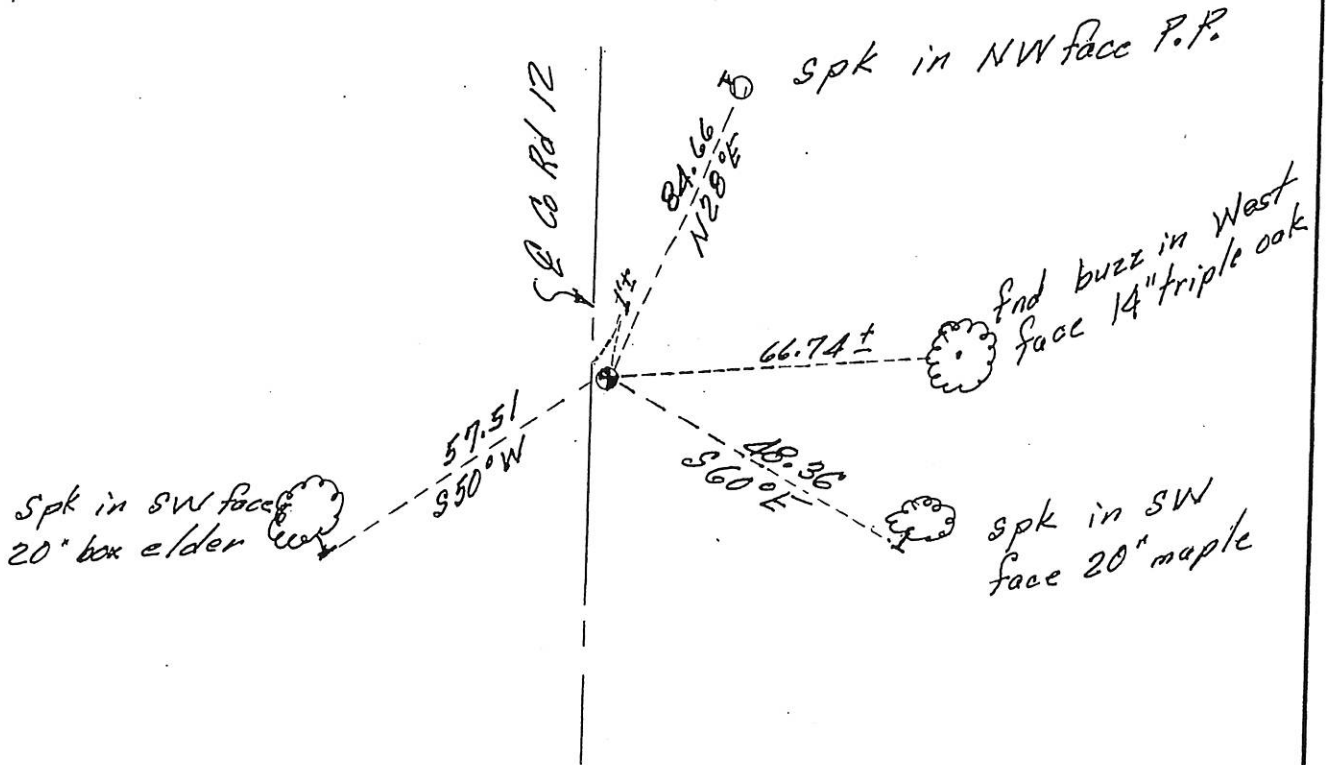
Northing= 113920.00

Easting= 380293.02

Note: NAD 1983, HARN 1996 Adjustment coordinates are NOT compatible with NAD 1983 coordinates

Note: 1 Meter=3937/1200 U.S. Survey Feet

## SKETCH OF REFERENCE TIES



Statement of evidence relative to this corner location is on back of page.

I hereby certify that this document and the data contained herein was prepared by me or under my direct supervision.

Ernest J. Rud  
Signature

10-6-2014  
Date

Registration No. 9808

Land Surveyor,  Professional Engineer

County Surveyor,  County Engineer

## OFFICE OF THE COUNTY RECORDER

County of \_\_\_\_\_

I hereby certify that this document was filed in the County Recorder's office at \_\_\_\_\_ M. on the

\_\_\_\_\_ day of \_\_\_\_\_ A.D., 20\_\_\_\_

County Recorder \_\_\_\_\_

BY \_\_\_\_\_ Deputy

DOCUMENT NO. \_\_\_\_\_

STATEMENT OF EVIDENCE

East Quarter Corner Section 19, Township 38, Range 24

3824126

All of the original bearing trees are now gone.

In 1901, John Nelson made a road survey from the northeast corner of Section 19 to a point 3.5 chains south of the east quarter corner. His ties are now gone.

On July 7, 1980 M.B. Rude made an excavation with the backhoe and at 4 feet below the surface we found a sandstone monument with an "X" marked on it.

He set a 2 ¾" by 19" cast iron monument on top of the sandstone monument.

In May 2003 E.G. Rud & Sons found this cast iron monument and established Kanabec County Coordinates on this location.

On July 9, 2014 E.G. Rud & Sons reset a ½" by 5" iron cap with cap marked "RLS 9808" as the cast iron monument had been removed for road construction. It fit the one remaining tie.